

Mississippi Beef Cattle Improvement Association

Mississippi Beef Cattle Improvement Association—Productivity and Quality



Upcoming events:

- February 10—Mississippi BCIA Annual Membership Meeting, Jackson, 1:00 p.m.
- March 1—Hinds CC Bull Test Sale and Mississippi BCIA Spring Bull Sale, Hinds Community College Bull Sale Facility, Raymond, MS
- March 13—Beef Cattle Handling Facilities Workshop, MSU, Biloxi, Oxford, Raymond
- March 15-17—MSU Artificial Insemination School, Mississippi State, MS
- April 3—Cattlemen’s Exchange Feeder Calf Board Sale, Winona, MS
- April 13—Beef Cattle Boot Camp, MSU, South Farm Beef Unit
- April 20—Beef Cattle Boot Camp, Poplarville, MS
- April 18-21—Beef Improvement Federation meeting, Houston, TX

Inside this issue:

- 2012 Cattle Inventory Estimates 2
- Future Projections for Production 3
- Environmental Impact of U. S. Beef Industry 4
- MBCIA Membership Application 4

Mississippi BCIA Annual Membership Meeting Reminder

Mississippi BCIA will hold its annual membership meeting on Friday, February 10, 2012 at the Trademart on the state fairgrounds in Jackson, MS in conjunction with the Mississippi Cattlemen’s Association annual convention.

The BCIA session will start at 1:00 p.m. It will feature Landon Marks, graduate assistant with the MSU Animal and Dairy

Sciences Department, speaking on “Factors affecting Sale Prices of Bulls at Performance-based Sales” This session will feature current research results from Mississippi, Alabama, and North Carolina bull sales.

Educational presentations at the MCA convention will begin at 1:00 p.m. on Friday, February 10 and continue through Saturday, February 11. For the complete schedule of

events, call the Mississippi Cattlemen’s Association at (601) 354-8951.

MBCIA Annual Membership Meeting
Friday, February 10, 2012, 1:00 p.m.
Trademart, State Fairgrounds, Jackson, MS

Hinds Bull Test & MBCIA Bull Sales—March 1

Producers looking for bulls for the upcoming spring breeding season should make plans to attend the Hinds Community College Bull Test Sale and MBCIA Spring Bull Sale. The 2 sales will be held back to back at the Hinds Bull Sale Facility in Raymond, MS starting at noon on Thursday, March 1, 2012.

Sale catalogs are currently being finalized and will become available in mid-February. The sales feature bulls backed with extensive performance information and screened for soundness. These bulls were developed in Mississippi and are adapted to local production conditions. They represent some of the top pedigrees and EPDs in their breeds.

Bids will be accepted from 2 distance bidding sites in Verona, MS and Batesville, MS as well as at the sale site. Details are included in the catalogs.

Mississippi’s Home for Performance Backed Bulls

Hinds CC Bull Test Sale
 Kenny Banas (601) 857-3351

MBCIA Spring Bull Sale
 Jane Parish (662) 325-7466

msucares.com/livestock/beef/mbcia

Hinds Community College Bull Test Sale
Mississippi BCIA Spring Bull Sale

Thursday, March 1, 2012
 12:00 Noon

Hinds Community College Sale Arena
 Raymond, Mississippi

2012 Cattle Inventory Estimates Released



Rises in beef cow replacement heifer, feeder heifer, steer, and lightweight calf inventories resulted in an increase in Mississippi cattle inventory over the last year.

The U.S. Department of Agriculture (USDA) National Agricultural Statistics Service (NASS) released the January Cattle Inventory Report on January 27, 2012.

United States cattle inventory estimates

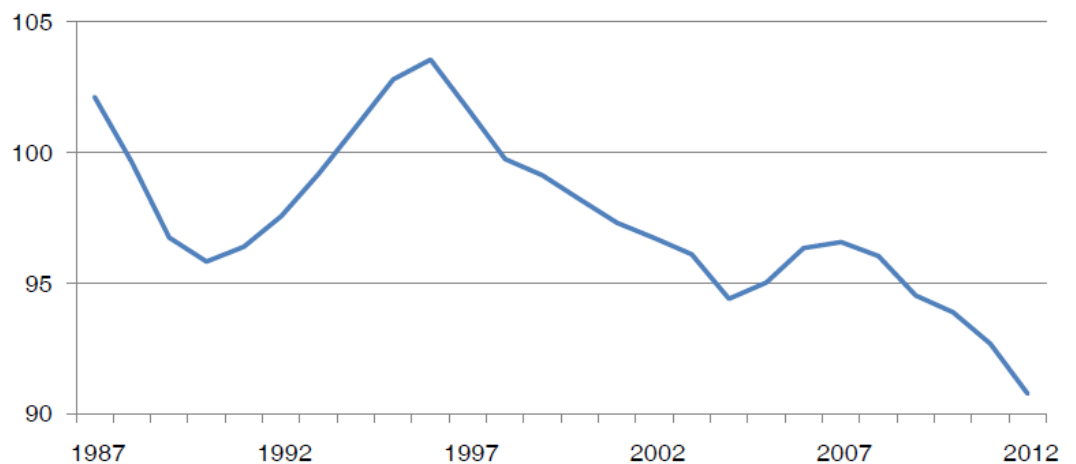
- U.S. cattle inventory declined by 2 percent in 2011
- On January 1, 2012, all cattle and calves in the U.S. totaled 90,788,500 head

Mississippi estimates (cont.)

- Milk cows that have calved, at 14,000 head, were down 7 percent
- All heifers 500 pounds and over at 125,000 head, were up 21 percent
- Beef cow replacement heifers at 82,000 head, were up 15 percent
- Milk cow replacement heifers at 7,000 head, were unchanged

Cattle Inventory – United States: January 1

Million head



Mississippi cattle inventory estimates

- Mississippi January cattle inventory was up 6 percent from last year
- On January 1, 2012, all cattle and calves in the U.S. totaled 90,788,500 head and in Mississippi totaled 950,000 head
- All cows and heifers that have calved, at 500,000 head, were down 2 percent from the year before
- Beef cows that have calved, at 486,000 head, were down 2 percent
- Other heifers at 36,000 head, were up 44 percent
- Steers weighing 500 pounds and over at 61,000 head, were up 27 percent
- Bulls weighing 500 pounds and over at 39,000 head, were unchanged
- Calves under 500 pounds at 225,000 head, were up 13 percent
- The 2011 calf crop is estimated at 385,000 head, down 4 percent from 2010

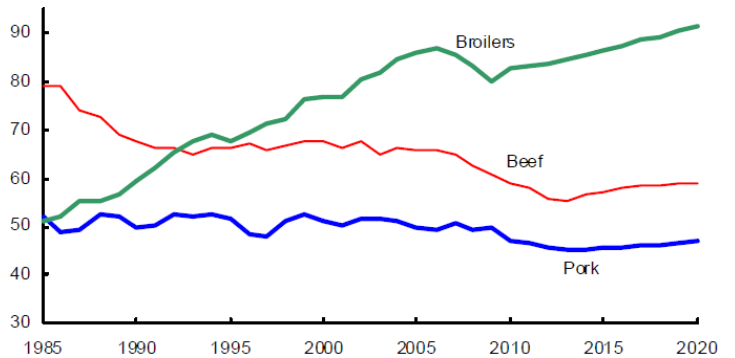
“...Despite declines in the size of the U.S. herd, Mississippi January cattle inventory was up 6% from 2011.”

Future Projections for U.S. Cattle and Beef Production

The USDA Economic Research Service predicts the following:

U.S. per capita meat consumption

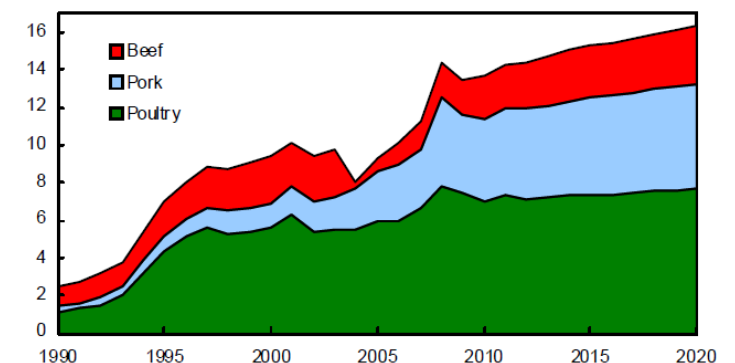
Pounds per capita, retail weight



- Moderate near-term changes in production in the livestock sector, along with projected gains in meat exports, result in higher consumer prices and lower per capita consumption. Annual average consumption of red meats and poultry falls from over 221 pounds per capita in 2004-07 to about 203 pounds in 2012 and 2013. As production increases over time, per capita consumption of red meats and poultry resumes growth, but only rises to about 216 pounds by 2020.
- Per capita beef consumption declines through 2013, before rising moderately through 2020. The initial decline reflects continuing reductions in beef production through 2012 coupled with expanding exports. However, as beef production increases in later years, per capita consumption grows.

U.S. meat exports

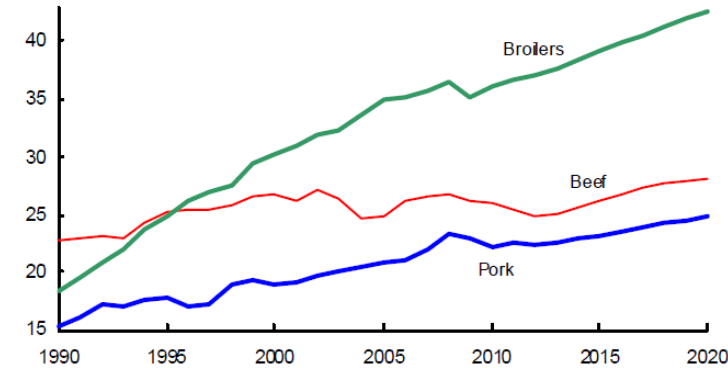
Billion pounds



- The projected rise in U.S. meat and poultry exports over the next decade reflects the resumption of global economic growth, a depreciation of the U.S. dollar, and continued foreign demand for selected cuts and parts from the large U.S. market. As a result, exports account for a larger share of U.S. meat and poultry use, although

U.S. red meat and poultry production

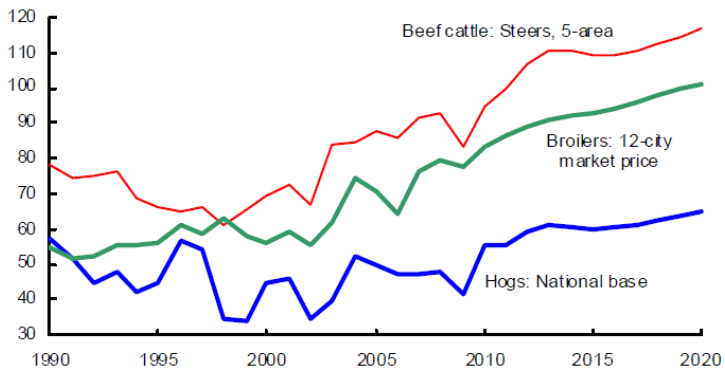
Billion pounds



- Reduced inventories and heifer retention during 2011 are expected to lead to reduced beef production through 2012. Beef production then rises in the remainder of the projection period as strengthening returns support herd rebuilding. Beef cow numbers rise from about 31 million head at the beginning of 2011 to over 34 million by 2020. The total cattle inventory drops below 92 million head before expanding to about 96.7 million at the end of the projection period. Rising slaughter weights also contribute to the longer term expansion of beef production. Although feed prices decline from current levels, continued historically-high feed costs result in stocker cattle remaining on pasture to heavier weights before entering feedlots.

Nominal U.S. livestock prices

Dollars per hundredweight



- Prices in the livestock sector are projected to generally rise over the projection period, reflecting a moderate pace of expansion combined with improving domestic and export demands.

Mississippi Beef Cattle Improvement Association—Productivity and Quality

Mississippi Beef Cattle Improvement Assn.
Box 9815
Mississippi State, MS 39762

Phone: 662-325-7466
Fax: 662-325-8873
Email: jparish@ads.msstate.edu



Send questions or comments to
Jane Parish, Extension Beef Cattle Specialist,
Mississippi State University Extension Service

Joe Parish

Mississippi State University does not discriminate on the basis of race, color, religion, national origin, sex, sexual orientation or group affiliation, age, disability, or veteran status.



Visit MBCIA online at
<http://msucares.com/livestock/beef/mbcia/>

MBCIA Membership Application

Name: _____

Address: _____

City: _____

County: _____ State: _____ Zip: _____

Phone: _____ Email: _____

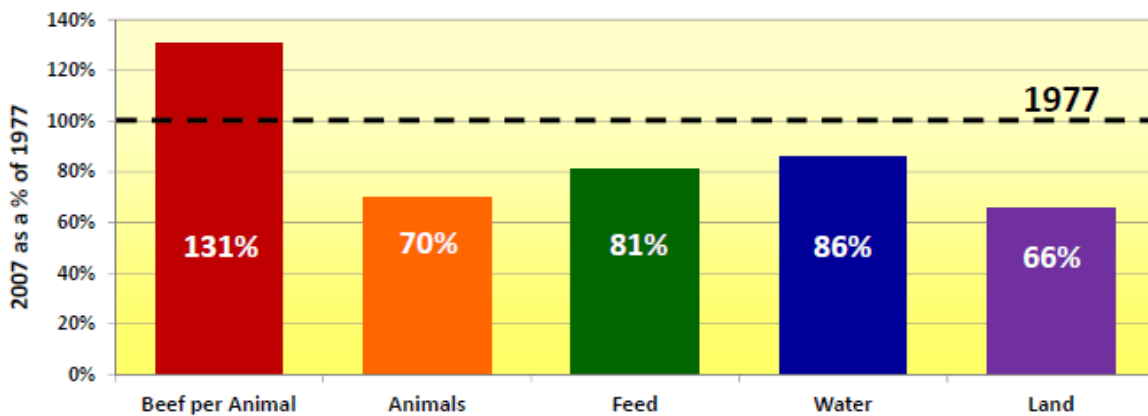
(Check one) Seedstock: Commercial:

Cattle breed(s): _____

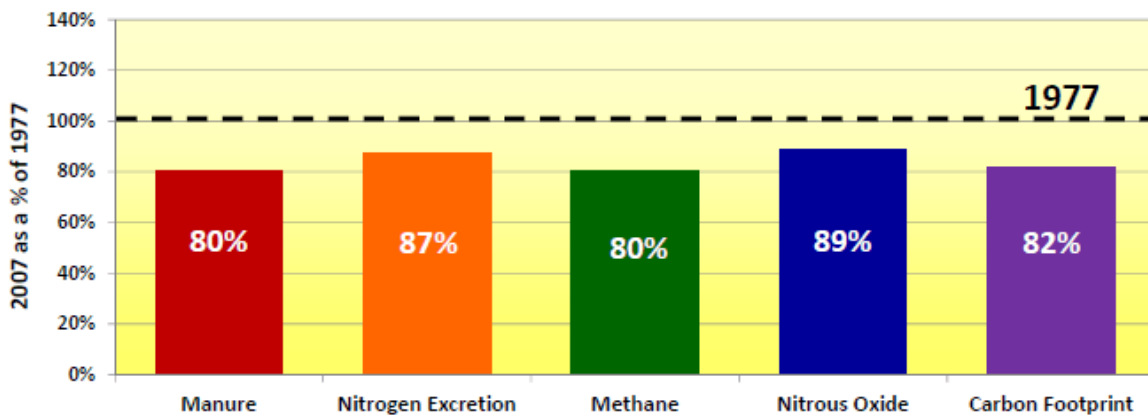
Completed applications and \$5 annual dues or \$100 life-time dues payable to Mississippi BCIA should be mailed to:

Mississippi Beef Cattle Improvement Association
Jane Parish, Extension Beef Cattle Specialist
Box 9815, Mississippi State, MS 39762

Comparing the Environmental Impact of the U.S. Beef Industry in 1977 to 2007



Comparison of Resource Use per kg Beef in 2007 vs. 1977



Comparison of Environmental Impact per kg Beef in 2007 vs. 1977

Source: J. L. Capper, Washington State University.