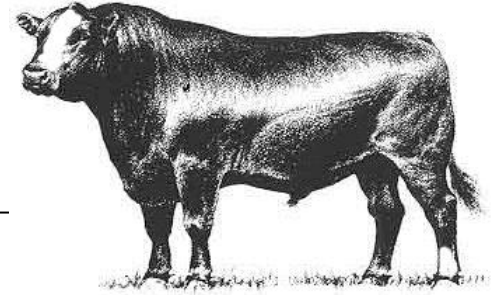


Hinds Community College Bull Test  
Mississippi Beef Cattle Improvement Association  
**2018 Spring Bull Sale**

**Thursday, March 1, 2018 • 12:00 Noon**  
**Hinds Community College**  
**1310 Seven Springs Road, Raymond, MS**



**MISSISSIPPI STATE UNIVERSITY™**  
**EXTENSION**

Dear Cattle Producers:

The Hinds Community College Bull Test and Mississippi Beef Cattle Improvement Association cattle marketing partnership is a proven source for breeding cattle that build profits. In today's cattle market, the payoffs from using quality herd sires make acquiring high quality genetics a must for producers.

We recognize that quality bulls are essential to producing profitable calf crops. Time and time again our bull buyers cite the breed leading genetics, environmental adaptability, freight, and customer service advantages of purchasing bulls raised in Mississippi. All bulls in our spring sale are screened for structure, disposition, and performance and are guaranteed as breeders. These bulls have passed breeding soundness examinations, met minimum growth and scrotal circumference requirements, and represent quality genetics.

As an added attraction, the Mississippi BCIA will host its annual membership meeting at the sale site starting at 6:00 p.m. on Wednesday, February 28, 2018. Attendees will also have an opportunity to view the sale cattle. The supper and program are open to the public. Please RSVP to Mari Quinn at 662-325-3516 or [m.quinn@msstate.edu](mailto:m.quinn@msstate.edu) if you plan to attend the Wednesday evening activities.

The sale will be broadcast live from the Raymond sale site over the Extension distance education system. A link to the sale site will be available at [extension.msstate.edu/beef](http://extension.msstate.edu/beef).

The cattle will be available for viewing at the Hinds Community College Sale Facility in Raymond, MS starting on the afternoon of February 28. BCIA members, breeders, and Extension personnel will be glad to assist you in selecting breeding cattle that will work well for your operation. We look forward to seeing you at the sale on March 1.

Sincerely,

Kenny Baner

Brandi B. Karisch

Cobie Rutherford

Hinds Bull Test Manager

Extension Beef Cattle Specialist

Extension Beef Instructor

Cooperative Extension Service · Mississippi State University  
Box 9815 · Mississippi State, MS 39762-9815 · Office (662) 325-3516 · Fax (662) 325-8873  
Mississippi State University, United States Department of Agriculture, Counties Cooperating  
Mississippi State University does not discriminate on the basis of race, color, religion, national origin, sex, age, disability, or veteran status.

### Consignors

- Blackberry Farms
- Blossom Hill Farm
- Fitch Brothers Charolais
- Fulper Angus Farm
- Madison Farms, LLC
- MBK Cattle
- Monogram Farms
- Moonshine Angus Ranch
- MSU Beef Unit
- Gary & Robbie Powell
- Shoemaker Angus Farm
- Sugarland Cattle
- Thames Angus Farm
- TPC Farm Property
- Vista Farms Cattle Co. LLC
- Yankee Cutoff Angus Ranch



MISSISSIPPI  
**BCIA**  
BEEF CATTLE IMPROVEMENT ASSOCIATION

## Consignor Contact Information

---

### **Blackberry Farms (Angus)**

Chuck Gravois  
2208 N. Bank Lane | Vacherie, LA 70090  
(225)206-0155, (225)265-2505

### **Blossom Hill Farm (SimAngus)**

Sammy Blossom  
2147 Joe Hall Road | Flora, MS 39071  
(601) 941-1276

### **Fitch Brothers Charolais (Charolais)**

Coy & Jerome Fitch  
113 St. Germain Street | Jeanerette, LA 70544  
(337) 376-5991, (337) 579-3422

### **Fulper Angus Farm (Angus)**

Chris Fulper  
P.O. Box 621 | Booneville, MS 38829  
(662) 164-4424, (662) 728-4934

### **Madison Farms, LLC (Angus)**

Mike Spruill  
8198 Oakenshield Ln | Pass Christian, MS 39571  
(228) 861-9630  
mspruill@gcpstress.com

### **MBK Cattle (Simmental & SimAngus)**

Matt & Brandi Karisch  
647 Polly Bell Road | Starkville, MS 39759  
Matt: (979) 249-6172  
mbkcattle@gmail.com

### **Monogram Farms (Angus)**

Roland Preuss  
1614 Ford Road | Terry, MS 39170  
(601) 878-5896

### **Moonshine Angus Ranch (Angus)**

Ray Gendron  
6316 Province Lane | Baton Rouge, LA 70808  
(225) 819-1354, (225) 931, 5751

### **MSU Beef Unit (Angus & Hereford)**

Cody Glenn & Brandi Karisch  
Box 9815, Mississippi State, MS 39762  
Cody: (601) 508-8689; Brandi (662) 325-7465  
cglenn@ads.msstate.edu

### **Gary & Robbie Powell (Angus)**

400 Franks Road | Mantachie, MS 38855  
(662) 640-1957

### **Shoemaker Angus Farm (Angus)**

Phillip & Beth Shoemaker  
168 Hill Ridge Road | Winnsboro, LA 71295  
(318) 235-5424

### **Sugarland Cattle (Angus)**

Eddy Hymel  
22799 North Oak Street | Vacherie, LA 70090  
(225) 265-7797, (225) 931-5751

### **Thames Angus Farm (Angus)**

Tony Thames  
187 Carmel New Hope Road | Jayess, MS 39461  
(601) 756 – 1357, (601) 587 – 7230

### **TPC Farm Property (Angus)**

Theo Costas & David Knighton  
1939 Davis Johnson Drive | Richland, MS 39218  
(601) 940-3733, (601) 906-2054,  
dknighton@yahoo.com

### **Vista Farms Cattle Co. LLC. (Angus)**

Scott McElfresh  
3514 County Rd 23 | Fayette, AL 35555  
(912) 257-5707  
[scottm@vistafarms.org](mailto:scottm@vistafarms.org)

### **Yankee Cutoff Angus Ranch (Angus)**

Crystal or Carl Schossow  
18341 Yankee Cutoff Road | Saucier, MS 39574  
(228) 326 – 3371, (228) 234-3210,  
ycarangus@aol.com

## Terms, Conditions, and General Sale Information

---

**TERMS:** Terms of the sale are cash. Settlements are to be made with the clerk immediately after the conclusion of the auction. The Mississippi Beef Cattle Improvement Association acts as an agent only. The contract is between the buyer and seller.

**BIDDING & DISPUTES:** All cattle will be sold at public auction to the highest bidder. The auctioneer will settle any disputes concerning bids, and auctioneer decisions will be final. *Auctioneer: Jarvene Shackelford - American Livestock Brokers:*  
*H: (662) 837-4904 | Mobile: (662) 837-1776*

**HEALTH:** Health papers from licensed veterinarians accompany cattle to the sale. It is the responsibility of the buyer to know the health restrictions of his/her state and be aware of the possibility of any subsequent testing of animals purchased through this sale as required by law.

**REGISTRATION:** All bulls have been registered with their respective breed associations. Properly signed certificate of registry transfers will be furnished to the buyer.

**BREEDING GUARANTEE:** Animals are guaranteed to be without defects, but nothing more.

**Bulls:** All sale bulls will have documentation of a passed breeding soundness exam, including scrotal measurements within 30 days prior to sale. Scrotal circumference measurement minimums for sale bulls are 32 cm for 12–16 month old bulls, 34 cm for 17–23 month old bulls, and 36 cm for 24+ month old bulls. Bulls failing to breed after a trial of six months may be returned to the seller, if in good condition. The seller reserves the right to try said animal for six months, and if he proves to be a breeder, to return him to the buyer at the buyer's expense. If the bull proves to be a non-breeder, a satisfactory exchange will be made or purchase price refunded.

**ANNOUNCEMENTS:** Announcements made from the auction block on sale day shall take precedence over information printed in the catalog. It is therefore the buyer's responsibility to pay attention to any such announcements.

**PROCESSING FOR SALE:** Cattle are to be delivered to the sale location by 12:00 noon on February 28, 2018 (the day preceding the sale). Cattle will be weighed, beginning at 1:00 p.m. that day and available for viewing afterwards.

**SALE ORDER:** Hinds Bull Test Bulls will sell first based on an index (2 x WDA + 1 x ADG)/3. The MBCIA bulls will sell based on individual performance data, EPDs, general conformation and quality. A selection index based on the individual bull's score in the following categories will be used to rank bulls for determination of sale order (highest scoring will sell first); CE or BW EPD (max of 5 points), WW EPD (max. of 7.5 points), YW EPD (max. of 7.5 points), scrotal circumference (max. of 5 points), weight per day of age (max. of 15 points), IMF EPD (max of 5 points), REA EPD (max of 5 points), and visual appraisal (max. of 40 points). Five points will be added to a bull's selection index total if ultrasound scan results are provided.

**CATTLE REMOVAL:** Cattle purchased will be cared for 24 hours after the conclusion of the sale without charge. Arrangements for removal from grounds must be made at the conclusion of the 24 hours.

**LIABILITY:** All persons who attend this sale do so at their own risk. The owners and sponsors assume no responsibility, legal or otherwise, for any accidents that may occur.

# Explanation of Performance Records

---

## Individual Bull Performance Records

### Hinds Test Bulls

BW	Adj. WW	Adj. YW	YW Ratio	Test WDA	WDA Ratio	Test ADG	ADG Ratio
1	2	4	5	6	7	8	9

### Mississippi BCIA Bulls

BW	Adj. WW	WW Ratio	Adj. YW	YW Ratio	Adj. IMF	IMF Ratio	Adj. REA	REA Ratio
1	2	3	4	5	10	11	12	13

- 1. Birth Weight** – Actual birth weight.
- 2. Adjusted Weaning Weight** – Weaning weight adjusted to 205 days of age.
- 3. Adjusted Weaning Weight Ratio** – Bull's weaning weight as compared to his contemporary group. Average = 100.
- 4. Adjusted Yearling Weight** – Yearling weight adjusted to 365 days of age.
- 5. Adjusted Yearling Weight Ratio** – Bull's yearling weight as compared to his contemporary group. Average =100.
- 6. Bull Test Weight Per Day of Age** – Final bull test weight divided by bull age in days.
- 7. Bull Test Weight Per Day of Age Ratio** – Bull's weight per day of age at bull test end as compared to his contemporary group. Average =100.
- 8. Bull Test Average Daily Gain** – Average daily gain in pounds per day over the 112-day bull test period.
- 9. Bull Test Average Daily Gain Ratio** – Bull's test average daily gain as compared to his contemporary group. Average =100.
- 10. Adjusted Intramuscular Fat** – Percent intramuscular fat of the ribeye adjusted to 12 months of age.
- 11. Adjusted Intramuscular Fat Ratio** – Bull's adjusted percent intramuscular fat as compared to his contemporary group. Average = 100.
- 12. Adjusted Ribeye Area** – Area of the ribeye in square inches adjusted to 12 months of age.
- 13. Adjusted Ribeye Area Ratio** – Bull's adjusted ribeye area as compared to his contemporary group. Average = 100.



## Mississippi BCIA Bull Designations

Bulls meeting certain expected progeny difference (EPD) requirements are noted with one or more of the following designations:

- **Balanced Trait:** should provide moderation for calving ease, growth, and milking ability
- **Terminal:** should produce calves with exceptional growth performance
- **Calving Ease:** should reduce the risk of calving difficulty in females to which a bull is bred
- **Carcass Merit:** should produce calves with good post-weaning growth, ribeye area, and marbling

## Expected Progeny Differences

Expected progeny differences are a useful genetic selection tool. They provide predictions of the expected performance of the calves sired by a bull compared to the expected performance of calves sired by other bulls of the same breed. They are calculated as part of national cattle evaluation programs and are based on the performance records of an individual animal, its relatives, and its progeny. Most breed associations publish EPDs on individual animals in sire summaries and searchable Internet databases. Breed associations also publish tables that show where individual animals rank within the breed for specific traits.

Expected progeny differences can be used to make herd genetic improvement in both commercial and seedstock operations. They should be used in conjunction with other selection criteria in a balanced approach to select herd sires with acceptable combinations of economically relevant traits that will complement cow herds and match market targets. Genetic improvement can mean increased weaning weights and growth performance, enhanced reproductive performance and better performance on the rail, all of which can enhance the profitability of a cattle operation. **Printed EPD values are accurate as of 2/1/2018.**

### Accuracy Values (ACC)

Expected progeny differences come with **accuracy values (ACC)** that give an indication of the reliability of the EPDs. Accuracy values help breeders determine the level of uncertainty or risk associated with selection decisions. They are reported as a decimal number between zero and one. Larger values indicate greater accuracy. Remember, EPDs can be directly compared within a breed regardless of accuracy. Accuracies simply reflect risk.

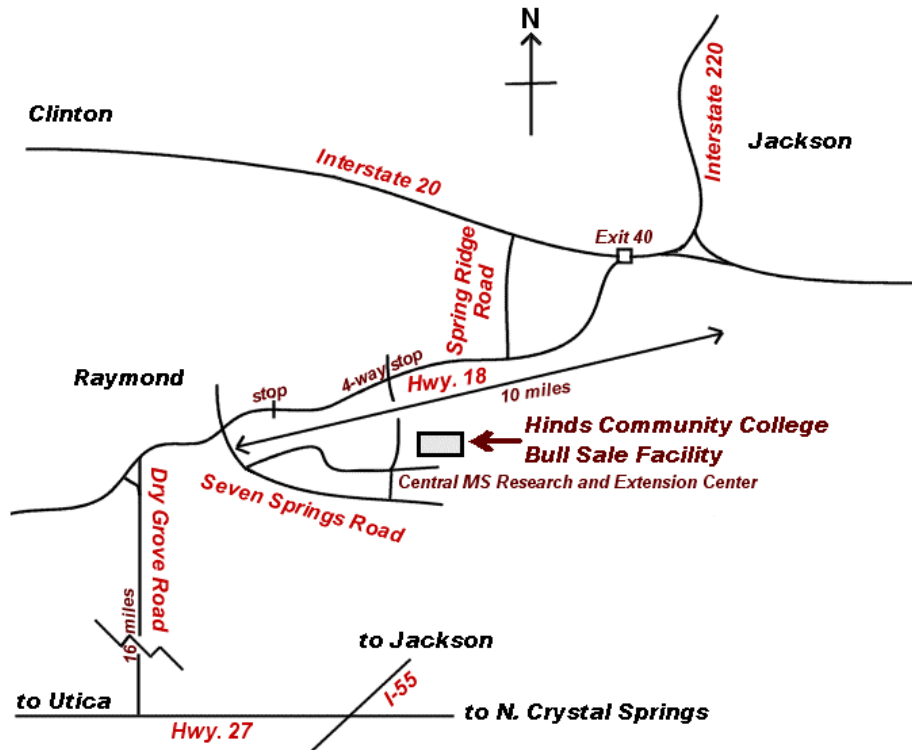
Expected change tables are published by breed associations as part of national cattle evaluations to show how much variation can be expected for EPDs at specific accuracy levels. As more usable performance information becomes available for an animal and its relatives and progeny, the more accurate or reliable its EPDs become. Thus, a young, unproven bull with no calves will have lower accuracy EPDs than a proven sire with hundreds of calf records.

### Spring 2018 EPD Percentile Rankings for Non-Parents

BREED	% RANKING	EPD							
		CE	Birth	Weaning	Yearling	Milk	Scrotal	Marb	REA
Angus	TOP 25%	9	0.3	58	102	27	1.11	0.70	0.63
	50%	6	1.4	51	89	24	0.73	0.50	0.47
	75%	3	2.5	43	76	21	0.34	0.33	0.32
Charolais	TOP 25%	8	-0.9	34.8	63.2	12.5	1.1	0.21	0.80
	50%	5.3	0.4	29.1	53.2	8.9	0.8	0.13	0.67
	75%	2.5	1.6	23.4	43.1	5.3	0.6	0.05	0.54
Simmental	TOP 25%	12.3	0.6	70.6	105.2	24.6		0.24	0.87
	50%	9.8	1.8	64.4	94.6	21.3		0.14	0.75
	75%	7.3	3.0	58.2	84.0	18.0		0.04	0.63
SimAngus	TOP 25%	14.6	-0.9	69.7	109.1	24.3		0.49	0.75
	50%	11.7	0.5	62.8	97.0	21.1		0.33	0.61
	75%	8.8	1.9	55.9	84.9	17.9		0.17	0.48

## Map to Sale Location

---



---

## Hinds Bulls Test Schedule

### HCC Bull Test 2017-2018 Schedule

October 17, 2017	Test Began
November 14, 2017	First Period
December 12, 2017	Second Period
January 9, 2018	Third Period
February 6, 2018	Fourth Period (End of Test)
March 1, 2018	Sale

#### Contact Numbers for HCC Bull Test Station:

Kenny Banes, Farm Manager: (601) 260-7850 - cell

Lisa Whatley, Office Manager: (601) 857-3351 - office

Email: [lwhatley@hindsc.edu](mailto:lwhatley@hindsc.edu)

# Monogram Farms



## Monogram 602 Focus 1306

1

ANGUS

Hinds  
Bull Test

Calved: 11/23/2016 Tattoo:1360 Reg. #: 18826400

Connealy In Focus 4925  
Monogram Focus 6024  
Monogram Queen Erica 5032  
S A V Brand Name 9115  
Monogram Blackbird 662  
Monogram Blackbird 349

BW	Adj. WW	WW Ratio	Adj. YW	YW Ratio	Test WDA	WDA Ratio	Test ADG	ADG Ratio						
76	688		1232	110	3.34	110	4.96	127						
	CED	BW	WW	YW	RADG	YH	SC	Doc	HP	CEM	Milk	MW	MH	\$EN
EPD	-6	5.6	69	115						4	23			-17.20
ACC	0.18	0.34	0.28	0.18						0.11	0.12			
	CW	Marb	RE	Fat	\$W	\$F	\$G	\$QG	\$YG	\$B				
EPD					+47.20	77.32								
ACC														

# Monogram Farms



## Monogram 46 BN 1066

2

ANGUS

Hinds  
Bull Test

Calved: 12/26/2016 Tattoo: 1186 Reg. #: 18826392

S A V Brand Name 9115  
Monogram Brand Name 463  
Monogram Peacemaker 2388  
Monogram Net Worth 2819  
Monogram Elba 611  
Monogram Elba 269

BW	Adj. WW	WW Ratio	Adj. YW	YW Ratio	Test WDA	WDA Ratio	Test ADG	ADG Ratio						
90	738		1292	115	3.51	115	4.55	116						
	CED	BW	WW	YW	RADG	YH	SC	Doc	HP	CEM	Milk	MW	MH	\$EN
EPD	-5	5.4	66	111				10		6	26			-19.28
ACC	0.18	0.34	0.29	0.18				0.05		0.10	0.12			
	CW	Marb	RE	Fat	\$W	\$F	\$G	\$QG	\$YG	\$B				
EPD	47	0.24	0.44	0.018	48.18	72.01	18.60	18.24	0.36	127.07				
ACC	0.05	0.05	0.05	0.05										

# Blossom Hill Farm



## CK-Upgrade 526D

3

SIMANGUS (3/4 SM, 1/4 AN)

Hinds  
Bull Test

Calved: 9/26/2016 Tattoo: 526D Reg. #: 3219933

Ellingson Legacy M229  
Mr NLC Upgrade U8676  
Ms NLC Mojo S6119 B  
GW Lucky Dice 187H  
Miss CK Ms 1/2 Sim 425W  
Irvington 265 3572 4225

BW	Adj. WW	WW Ratio	Adj. YW	YW Ratio	Test WDA	WDA Ratio	Test ADG	ADG Ratio			
78	663		1234		3.32	100	4.24	100			
	CE	BW	WW	YW	ADG	MCE	Milk	Stay	DOC	YG	Shr
EPD	11.8	-0.4	66.4	105.7	0.25	6.0	19.6	5.4	10.3	-0.39	-0.39
ACC	0.22	0.22	0.21	0.22	0.22	0.22	0.22	0.17	0.19	0.16	0.06
	CW	Marb	REA	BF	API	TI					
EPD	32.3	0.33	0.99	-0.063	121.3	74.7					
ACC	0.18	0.19	0.18	0.19							

# Moonshine Angus Ranch



## MAR Double Dateline 926

4

ANGUS

Hinds  
Bull Test

Calved: 9/2/2016 Tattoo: 926 Reg. #:18788632

Connealy Reflection  
Jindra Double Vision  
Hoff Rachel 8312 405  
Vermilion Dateline 7078  
MAF Chloe  
G P R 2067 Blackcap H94

BW	Adj. WW	WW Ratio	Adj. YW	YW Ratio	Test WDA	WDA Ratio	Test ADG	ADG Ratio						
			<b>891</b>	<b>91</b>	<b>2.39</b>	<b>91</b>	<b>5.40</b>	<b>140</b>						
CED	BW	WW	YW	RADG	YH	SC	Doc	HP	CEM	Milk	MW	MH	\$EN	
EPD	<b>0</b>	<b>6.3</b>	<b>82</b>	<b>150</b>	<b>0.34</b>	<b>1.2</b>	<b>0.59</b>	<b>20</b>	<b>12.3</b>	<b>13</b>	<b>23</b>	<b>95</b>	<b>1.4</b>	<b>-25.18</b>
ACC	0.33	0.47	0.41	0.37	0.27	0.39	0.40	0.35	0.22	0.30	0.31	0.33	0.37	
CW	Marb	RE	Fat	\$W	\$F	\$G	\$QG	\$YG	\$B					
EPD	<b>78</b>	<b>0.60</b>	<b>0.90</b>	<b>0.006</b>	<b>56.27</b>	<b>131.40</b>	<b>35.29</b>	<b>33.39</b>	<b>1.90</b>	<b>191.25</b>				
ACC	0.39	0.36	0.36	0.32										

# Monogram Farms



## Monogram 46 BN 1006

5

ANGUS

Hinds  
Bull Test

Calved: 12/26/2016 Tattoo: 1006 Reg. #:18826381

S A V Brand Name 9115  
Monogram Brand Name 463  
Monogram Peacemaker 2388  
S A V Brilliance 8077  
Monogram Blackbird 2911  
Monogram Blackbird 2316

BW	Adj. WW	WW Ratio	Adj. YW	YW Ratio	Test WDA	WDA Ratio	Test ADG	ADG Ratio					
<b>76</b>	<b>703</b>		<b>1135</b>	<b>101</b>	<b>3.09</b>	<b>101</b>	<b>3.93</b>	<b>100</b>					
CED	BW	WW	YW	RADG	YH	SC	Doc	HP	CEM	Milk	MW	MH	\$EN
EPD	<b>0</b>	<b>3.5</b>	<b>63</b>	<b>107</b>					<b>6</b>	<b>22</b>			
ACC	0.17	0.35	0.29	0.19					0.07	0.10			
CW	Marb	RE	Fat	\$W	\$F	\$G	\$QG	\$YG	\$B				
EPD	<b>+28</b>	<b>+0.24</b>	<b>+0.34</b>	<b>+0.003</b>	<b>+25.03</b>	<b>+42.98</b>	<b>+21.64</b>	<b>17.04</b>	<b>+4.60</b>	<b>+76.12</b>			
ACC	0.07	0.12	0.13	0.10									

# Monogram Farms



## Monogram 46 BN 1376

6

ANGUS

Hinds  
Bull Test

Calved: 11/16/2016 Tattoo: 1376 Reg. #:18826459

S A V Brand Name 9115  
Monogram Brand Name 463  
Monogram Peacemaker 2388  
S A V Priority 7283  
Monogram Queen 2643  
Monogram Queen 5274

BW	Adj. WW	WW Ratio	Adj. YW	YW Ratio	Test WDA	WDA Ratio	Test ADG	ADG Ratio					
<b>90</b>	<b>716</b>		<b>1151</b>	<b>103</b>	<b>3.05</b>	<b>100</b>	<b>3.97</b>	<b>102</b>					
CED	BW	WW	YW	RADG	YH	SC	Doc	HP	CEM	Milk	MW	MH	\$EN
EPD	<b>-4</b>	<b>5.7</b>	<b>62</b>	<b>98</b>					<b>5</b>	<b>20</b>			<b>-5.95</b>
ACC	0.18	0.34	0.29	0.19					0.11	0.12			
CW	Marb	RE	Fat	\$W	\$F	\$G	\$QG	\$YG	\$B				
EPD	<b>35</b>	<b>0.21</b>	<b>0.54</b>	<b>0.001</b>	<b>40.35</b>	<b>51.01</b>	<b>22.67</b>	<b>16.65</b>	<b>6.02</b>	<b>104.87</b>			
ACC	0.05	0.05	0.05	0.05									



# Monogram Farms



## Monogram Bluestem 1556

7

ANGUS

Hinds  
Bull Test

Calved: 11/4/2016 Tattoo: 1556 Reg. #:18826477

S A V Net Worth 4200  
Buford BlueStem 9974  
LCC Erica NG724  
K C F Bennett Absolute  
Monogram Duchess 1154  
Monogram Duchess 582

BW	Adj. WW	WW Ratio	Adj. YW	YW Ratio	Test WDA	WDA Ratio	Test ADG	ADG Ratio					
64	672		1150	117	3.01	115	3.97	102					
CED	BW	WW	YW	RADG	YH	SC	Doc	HP	CEM	Milk	MW	MH	\$EN
EPD	10	-0.4	49	85					9	23			-4.15
ACC	0.28	0.36	0.31	0.23					0.19	0.19			
CW	Marb	RE	Fat	\$W	\$F	\$G	\$QG	\$YG	\$B				
EPD	35	0.54	0.55	0.047	46.70	36.81	31.94	31.25	0.69	111.64			
ACC	0.05	0.05	0.05	0.05									

# Monogram Farms



## Monogram 46 BN 1186

8

ANGUS

Hinds  
Bull Test

Calved: 12/26/2016 Tattoo: 1186 Reg. #:18826392

S A V Brand Name 9115  
Monogram Brand Name 463  
Monogram Peacemaker 2388  
S A V Brilliance 8077  
Monogram Evergreen 24012  
Monogram Evergreen 4443

BW	Adj. WW	WW Ratio	Adj. YW	YW Ratio	Test WDA	WDA Ratio	Test ADG	ADG Ratio					
72	652		1075	96	2.92	96	3.75	96					
CED	BW	WW	YW	RADG	YH	SC	Doc	HP	CEM	Milk	MW	MH	\$EN
EPD	3	1.7	54	89					8	22			-4.59
ACC	0.17	0.35	0.29	0.19					0.11	0.13			
CW	Marb	RE	Fat	\$W	\$F	\$G	\$QG	\$YG	\$B				
EPD				48.10	40.46								
ACC													

# Sugarland Cattle



## SCC Insight Boy 904

9

ANGUS

Hinds  
Bull Test

Calved: 01/02/2017 Tattoo: 904 Reg. #:19043446

S A V Brilliance 8077  
PVF Insight 0129  
PVF Missie 790  
Rito 334 of 2536 323  
Rito Lady  
C E Blackcap

BW	Adj. WW	WW Ratio	Adj. YW	YW Ratio	Test WDA	WDA Ratio	Test ADG	ADG Ratio						
			1036	92	2.84	93	3.83	98						
CED	BW	WW	YW	RADG	YH	SC	Doc	HP	CEM	Milk	MW	MH	\$EN	
EPD	5	1.6	50	94	0.28	0.5	0.66	15	4.9	6	27	37	0.4	-10.96
ACC	0.21	0.27	0.19	0.19	0.05	0.05	0.05	0.05	0.05	0.16	0.15	0.05	0.05	
CW	Marb	RE	Fat	\$W	\$F	\$G	\$QG	\$YG	\$B					
EPD	45	0.25	1.06	-0.011	47.30	59.33	30.12	18.71	11.41	138.94				
ACC	0.05	.05	.05	.05										



# Fulper Angus Farms



**Fulper Emblazon D09**

**13**

**ANGUS**

*Hinds  
Bull Test*

Calved: 10/07/2016 Tattoo: D09 Reg. #:18883875

D H D Traveler 6807  
O C C Emblazon 854E  
Dixie Erica of C H 1019  
G A R Retail Product  
Baldrige Rita R138  
G A R Prime Time 2409

BW	Adj. WW	WW Ratio	Adj. YW	YW Ratio	Test WDA	WDA Ratio	Test ADG	ADG Ratio						
			<b>1047</b>	<b>106</b>	<b>2.81</b>	<b>107</b>	<b>3.26</b>	<b>84</b>						
CED	BW	WW	YW	RADG	YH	SC	Doc	HP	CEM	Milk	MW	MH	\$EN	
EPD	<b>14</b>	<b>-0.4</b>	<b>40</b>	<b>71</b>	<b>0.15</b>	<b>-0.1</b>	<b>0.33</b>	<b>11</b>	<b>8.3</b>	<b>9</b>	<b>26</b>	<b>6</b>	<b>-0.3</b>	<b>3.59</b>
ACC	0.05	0.05	0.05	0.05	0.05	0.05	0.05	0.05	0.05	0.05	0.05	0.05		
CW	Marb	RE	Fat	\$W	\$F	\$G	\$QG	\$YG	\$B					
EPD	<b>23</b>	<b>0.46</b>	<b>0.28</b>	<b>0.032</b>	<b>47.17</b>	<b>22.52</b>	<b>29.53</b>	<b>28.21</b>	<b>1.32</b>	<b>84.91</b>				
ACC	0.05	0.05	0.05	0.05										

# Monogram Farms



**Monogram 46 BN 1136**

**14**

**ANGUS**

*Hinds  
Bull Test*

Calved: 11/26/2016 Tattoo: 1136 Reg. #:18826388

S A V Brand Name 9115  
Monogram Brand Name 463  
Monogram Peacemaker 2388  
Connealy Final Product  
Monogram Betty 762  
Monogram Betty 2380

BW	Adj. WW	WW Ratio	Adj. YW	YW Ratio	Test WDA	WDA Ratio	Test ADG	ADG Ratio					
<b>74</b>	<b>724</b>		<b>1106</b>	<b>99</b>	<b>3.00</b>	<b>98</b>	<b>2.81</b>	<b>72</b>					
CED	BW	WW	YW	RADG	YH	SC	Doc	HP	CEM	Milk	MW	MH	\$EN
EPD	<b>3</b>	<b>2.0</b>	<b>65</b>	<b>107</b>					<b>10</b>	<b>23</b>			<b>-13.65</b>
ACC	0.18	0.34	0.29	0.19					0.11	0.12			
CW	Marb	RE	Fat	\$W	\$F	\$G	\$QG	\$YG	\$B				
EPD	<b>42</b>	<b>0.24</b>	<b>0.52</b>	<b>0.020</b>	<b>57.37</b>	<b>65.31</b>	<b>20.48</b>	<b>18.24</b>	<b>2.24</b>	<b>118.80</b>			
ACC	0.05	0.05	0.05	0.05									

# Moonshine Angus Ranch



**MAR Dateline Duty 946**

**15**

**ANGUS**

*Hinds  
Bull Test*

Calved: 9/04/2016 Tattoo: 946 Reg. #:18792081

Werner War Party 2417  
R B Tour Of Duty 177  
B A Lady 6807 305  
Vermilion Dateline 7078  
MAF Chloe  
G P R 2067 Blackcap H94

BW	Adj. WW	WW Ratio	Adj. YW	YW Ratio	Test WDA	WDA Ratio	Test ADG	ADG Ratio						
			<b>848</b>	<b>86</b>	<b>2.27</b>	<b>87</b>	<b>4.20</b>	<b>109</b>						
CED	BW	WW	YW	RADG	YH	SC	Doc	HP	CEM	Milk	MW	MH	\$EN	
EPD	<b>1</b>	<b>4.2</b>	<b>60</b>	<b>103</b>	<b>0.18</b>	<b>0.6</b>	<b>0.45</b>	<b>20</b>	<b>12.0</b>	<b>11</b>	<b>27</b>	<b>60</b>	<b>0.6</b>	<b>-13.72</b>
ACC	0.31	0.42	0.37	0.34	0.21	0.36	0.36	0.31	0.20	0.27	0.28	0.27	0.32	
CW	Marb	RE	Fat	\$W	\$F	\$G	\$QG	\$YG	\$B					
EPD	<b>45</b>	<b>0.67</b>	<b>1.07</b>	<b>-0.015</b>	<b>51.20</b>	<b>52.29</b>	<b>47.63</b>	<b>35.77</b>	<b>11.87</b>	<b>141.47</b>				
ACC	0.35	0.32	0.33	0.29										

# Monogram Farms



## Monogram 6 Bluestem 1426

16

ANGUS

Hinds  
Bull Test

Calved: 11/12/2016 Tattoo: 1426 Reg. #:18826467

Buford BlueStem 9974  
Monogram Bluestem 64  
Monogram Rose 2616  
Monogram Brilliance 2771  
Monogram Elba 793  
Monogram Elba 2290

BW	Adj. WW	WW Ratio	Adj. YW	YW Ratio	Test WDA	WDA Ratio	Test ADG	ADG Ratio						
80	774		1071	109	2.84	108	3.04	79						
	CE	BW	WW	YW	RADG	YH	SC	Doc	HP	CEM	Milk	MW	MH	\$EN
EPD	-6	4.7	58	100						0	25			-13.15
ACC	0.16	0.32	0.25	0.15						0.09	0.10			
	CW	Marb	RE	Fat	\$W	\$F	\$G	\$QG	\$YG	\$B				
EPD	37	0.35	0.52	0.017	42.29	57.45	27.09	23.51	3.58	114.41				
ACC	0.05	0.05	0.05	0.05										

# Fitch Brothers Charolais



## FBC Mr Fireman D116P

17

CHAROLAIS

Hinds  
Bull Test

Calved: 12/11/2016 Tattoo: D116 Reg. #:M893873

LHD Cigar E46  
FBC Cajun Smoke 1034  
JD Ms Commander B309  
VCR Mr Dakota Style 55 P  
FBC Miss Dakota Style 1084 P  
FBC Miss Prime Cut 2089 P

BW	Adj. WW	WW Ratio	Adj. YW	YW Ratio	Test WDA	WDA Ratio	Test ADG	ADG Ratio
83	687	107	1030	114	2.74	113	2.86	128
	CE	BW	WW	YW	Milk	MCE		
EPD	-0.3	3.0	35	53	11	3.8		
ACC	0.21	0.31	0.21	0.12	0.11	0.09		
	TSI	SC	CWT	REA	FAT	MARB		
EPD	190.64	0.9	14	0.76	-0.009	-0.07		
ACC		PE	PE	PE	PE	PE		

# Fulper Angus Farm



## Fulper X Journey D05

18

ANGUS

Hinds  
Bull Test

Calved: 8/25/2016 Tattoo: D05 Reg. #:18868572

B/R Future Direction 4268  
WR Journey-1X7  
2 Bar 5050 New Design 7831  
A A R Ten X 7008 S A  
Fulper TenX 084  
Fulper New Design F090

BW	Adj. WW	WW Ratio	Adj. YW	YW Ratio	Test WDA	WDA Ratio	Test ADG	ADG Ratio						
			1035	105	2.73	104	2.86	74						
	CE	BW	WW	YW	RADG	YH	SC	Doc	HP	CEM	Milk	MW	MH	\$EN
EPD	13	-1.2	63	107	0.24	0.6	1.04	15	11.5	15	22	17	0.3	-2.69
ACC	0.36	0.51	0.45	0.40	0.27	0.42	0.43	0.38	0.22	0.31	0.31	0.32	0.37	
	CW	Marb	RE	Fat	\$W	\$F	\$G	\$QG	\$YG	\$B				
EPD	46	1.11	0.44	0.033	68.80	75.36	45.16	46.61	-1.45	159.55				
ACC	0.41	0.37	0.37	0.34										

## Fitch Brothers Charolais



**FBC Mr Fireman 1227P**

**19**

**CHAROLAIS**

*Hinds*  
*Bull Test*

Calved: 1/22/2017 Tattoo: 1227 Reg. #:M893869

LHD Cigar E46  
FBC Cajun Smoke 1034  
JD Ms Commander B309  
WCR Sir Design 7017 P  
FBC Miss Design 2013 P  
FBC Miss Prime Cut 3017 P

BW	Adj. WW	WW Ratio	Adj. YW	YW Ratio	Test WDA	WDA Ratio	Test ADG	ADG Ratio
<b>62</b>	<b>513</b>	<b>94</b>	<b>920</b>	<b>102</b>	<b>2.51</b>	<b>103</b>	<b>3.04</b>	<b>136</b>
	CE	BW	WW	YW	Milk	MCE		
EPD	<b>8.6</b>	<b>-1.6</b>	<b>24</b>	<b>39</b>	<b>9</b>	<b>6.4</b>		
ACC	0.19	0.32	0.24	0.12	0.12	0.09		
	TSI	SC	CWT	REA	FAT	MARB		
EPD	<b>184.27</b>	<b>1.0</b>	<b>16</b>	<b>0.71</b>	<b>-0.011</b>	<b>-0.05</b>		
ACC		PE	PE	PE	PE	PE		

## Fitch Brothers Charolais



**FBC Fireman 2077P**

**20**

**CHAROLAIS**

*Hinds*  
*Bull Test*

Calved: 2/07/2017 Tattoo: 2077 Reg. #:M893875

LHD Cigar E46  
FBC Gunsmoke 1044  
JD Ms Commander B309  
VCR Sir Mac IV 128 P  
VCR Miss Mac 4130 P  
VCR Ms Design 0399 P

BW	Adj. WW	WW Ratio	Adj. YW	YW Ratio	Test WDA	WDA Ratio	Test ADG	ADG Ratio
<b>78</b>	<b>510</b>	<b>93</b>	<b>912</b>	<b>101</b>	<b>2.39</b>	<b>98</b>	<b>2.54</b>	<b>98</b>
	CE	BW	WW	YW	Milk	MCE		
EPD	<b>-2.5</b>	<b>2.9</b>	<b>28</b>	<b>42</b>	<b>14</b>	<b>2.8</b>		
ACC	0.20	0.33	0.25	0.16	0.13	0.11		
	TSI	SC	CWT	REA	FAT	MARB		
EPD	<b>181.60</b>	<b>0.8</b>	<b>16</b>	<b>0.70</b>	<b>-0.019</b>	<b>-0.04</b>		
ACC		PE	PE	PE	PE	PE		

## Fitch Brothers Charolais



**FBC Mr Money 0056P**

**21**

**CHAROLAIS**

*Hinds*  
*Bull Test*

Calved: 10/05/2016 Tattoo: 0056 Reg. #:M893870

LT Ledger 0332 P  
WC Capital Gain 2220 P ET  
JWK Clarice J139 ET  
FBC Prime Cut 2142 P  
FBC Miss Prime Cut 1144 P  
FBC Miss Force 2134 P

BW	Adj. WW	WW Ratio	Adj. YW	YW Ratio	Test WDA	WDA Ratio	Test ADG	ADG Ratio
<b>69</b>	<b>546</b>	<b>91</b>	<b>885</b>	<b>86</b>	<b>2.32</b>	<b>85</b>	<b>2.32</b>	<b>84</b>
	CE	BW	WW	YW	Milk	MCE		
EPD	<b>0.5</b>	<b>1.2</b>	<b>29</b>	<b>56</b>	<b>14</b>	<b>3.8</b>		
ACC	PE	I	0.25	0.15	0.14	PE		
	TSI	SC	CWT	REA	FAT	MARB		
EPD	<b>202.60</b>	<b>0.9</b>	<b>24</b>	<b>0.57</b>	<b>0.014</b>	<b>0.21</b>		
ACC		PE	PE	PE	PE	PE		

# Fitch Brothers Charolais



**FBC Mac Daddy 1047P**

**22**

**CHAROLAIS**

*Hinds*  
**Bull Test**

Calved: 1/04/2017 Tattoo: 1047 Reg. #:EM893956

WCR Sir Fab Mac 809  
WCR Sir Fa Mac 2244  
WCR Miss Century 920 TWN  
LT Rio Blanco 1234 P  
FBC Miss Blanco 1145 P  
WCR Miss Impressive 916P

BW	Adj. WW	WW Ratio	Adj. YW	YW Ratio	Test WDA	WDA Ratio	Test ADG	ADG Ratio
<b>83</b>	<b>480</b>	<b>100</b>	<b>816</b>	<b>91</b>	<b>2.16</b>	<b>89</b>	<b>2.54</b>	<b>114</b>
	CE	BW	WW	YW	Milk	MCE		
EPD	-0.1	1.6	29	55	9	4.9		
ACC	PE	PE	PE	PE	PE	PE		
	TSI	SC	CWT	REA	FAT	MARB		
EPD	199.98	0.6	25	0.46	0.027	0.22		
ACC		PE	PE	PE	PE	PE		

# Fitch Brothers Charolais



**FBC Equitys Justice 1217**

**23**

**CHAROLAIS**

*Hinds*  
**Bull Test**

Calved: 01/21/2017 Tattoo: 1217 Reg. #:PENDING

BHD Cobalt S553  
JDJ Equity 2370 P  
JDJ Ms Pheonix T3024  
M6 Grid Maker 104 PET  
D&D Ms Clarice 2809 PLD ET  
JWK Clarice J139 ET

BW	Adj. WW	WW Ratio	Adj. YW	YW Ratio	Test WDA	WDA Ratio	Test ADG	ADG Ratio
			<b>880</b>	<b>98</b>	<b>2.40</b>	<b>99</b>	<b>2.05</b>	<b>92</b>
	CE	BW	WW	YW	Milk	MCE		
EPD								
ACC	PE	PE	PE	PE	PE	PE		
	TSI	SC	CWT	REA	FAT	MARB		
EPD								
ACC		PE						

# Gary Powell



## Fine Product G175

Connealy Final Product  
 MCATL Pure Product 903-55  
 M A Esta 55-252  
 Emblazon S210  
 G-70 Mountain Dew  
 C F Susie Mae 70

### Lot 24

**ANGUS**

Calved: 1/24/2016 Tattoo: G175 Reg. #:18839667

BW	Adj. WW	WW Ratio	Adj. YW	YW Ratio	Adj. IMF	IMF Ratio	Adj. REA	REA Ratio						
<b>70</b>	<b>734</b>	<b>106</b>	<b>1043</b>	<b>101</b>										
	CED	BW	WW	YW	RADG	YH	SC	Doc	HP	CEM	Milk	MW	MH	\$EN
EPD	<b>4</b>	<b>0.9</b>	<b>40</b>	<b>81</b>	<b>0.17</b>	<b>-0.2</b>	<b>0.02</b>	<b>7</b>	<b>12.7</b>	<b>7</b>	<b>17</b>	<b>21</b>	<b>0.2</b>	<b>9.66</b>
ACC	0.34	0.53	0.46	0.41	0.23	0.38	0.39	0.34	0.18	0.29	0.32	0.30	0.35	
	CW	Marb	RE	Fat	\$W	\$F	\$G	\$QG	\$YG	\$B				
EPD	<b>24</b>	<b>0.42</b>	<b>0.10</b>	<b>0.035</b>	<b>30.32</b>	<b>34.12</b>	<b>24.58</b>	<b>26.55</b>	<b>-1.97</b>	<b>78.98</b>				
ACC	0.39	0.34	0.34	0.30										

# Gary Powell



## G-191 Wind Star

Summitcrest Complete 1P55  
 Shady Brook Complete 4019  
 Flinks Donna 4165 J343 416  
 Waggoner 6D2 Traveler 1008  
 P-16 Linda Lou  
 C F Susie Mae 70

### Lot 25

**ANGUS**

Calved: 10/15/2016 Tattoo: G191 Reg. #:18886724

BW	Adj. WW	WW Ratio	Adj. YW	YW Ratio	Adj. IMF	IMF Ratio	Adj. REA	REA Ratio						
<b>65</b>	<b>570</b>	<b>95</b>	<b>950</b>	<b>96</b>	<b>3.98</b>	<b>95</b>	<b>10.8</b>	<b>96</b>						
	CED	BW	WW	YW	RADG	YH	SC	Doc	HP	CEM	Milk	MW	MH	\$EN
EPD	<b>5</b>	<b>1.3</b>	<b>29</b>	<b>55</b>						<b>9</b>	<b>28</b>			<b>1.75</b>
ACC	0.15	0.32	0.26	0.15						0.07	0.12			
	CW	Marb	RE	Fat	\$W	\$F	\$G	\$QG	\$YG	\$B				
EPD	<b>8</b>	<b>0.49</b>	<b>0.24</b>	<b>0.009</b>	<b>29.70</b>	<b>1.10</b>	<b>35.71</b>	<b>29.41</b>	<b>6.30</b>	<b>52.85</b>				
ACC	0.20	0.16	0.20	0.17										

# Madison Farms LLC



## MF Response 06

S A V 707 Rito 9969  
 S A V Response 2411  
 S A V Madame Pride 0075  
 S A V 8180 Traveler 004  
 CC Blackcap 1311  
 Southern Blackcap 8120 4147

### Lot 26

**ANGUS**

Calved: 8/30/2016 Tattoo: MF6 Reg. #:18806078

BW	Adj. WW	WW Ratio	Adj. YW	YW Ratio	Adj. IMF	IMF Ratio	Adj. REA	REA Ratio						
<b>91</b>	<b>750</b>	<b>100</b>	<b>1200</b>	<b>100</b>										
	CED	BW	WW	YW	RADG	YH	SC	Doc	HP	CEM	Milk	MW	MH	\$EN
EPD	<b>1</b>	<b>3.0</b>	<b>45</b>	<b>89</b>	<b>0.22</b>	<b>+0.5</b>	<b>0.69</b>	<b>17</b>	<b>11.8</b>	<b>10</b>	<b>16</b>	<b>50</b>	<b>0.6</b>	<b>4.84</b>
ACC	0.30	0.47	0.41	0.35	0.22	0.36	0.38	0.32	0.18	0.26	0.27	0.29	0.33	
	CW	Marb	RE	Fat	\$W	\$F	\$G	\$QG	\$YG	\$B				
EPD	<b>41</b>	<b>0.38</b>	<b>0.45</b>	<b>0.010</b>	<b>25.00</b>	<b>46.79</b>	<b>27.46</b>	<b>24.76</b>	<b>2.70</b>	<b>120.67</b>				
ACC	0.36	0.33	0.33	0.30										

# Phillip & Beth Shoemaker Angus Farm



**Hill Ridge Rampage 715**



Balanced, Terminal

**ANGUS**

**Lot 27**

Calved: 12/2/2015 Tattoo: 715 Reg. #:18314443

MCC Daybreak  
 Quaker Hill Rampage 0A036  
 QHF Blackcap 6E2 OF4V16 4355  
 Conneally Consensus 7229  
 1352 Of Consensus  
 JMC Executa Sefera 1352 3191

BW	Adj. WW	WW Ratio	Adj. YW	YW Ratio	Adj. IMF	IMF Ratio	Adj. REA	REA Ratio						
<b>69</b>	<b>776</b>	<b>100</b>	<b>1200</b>	<b>100</b>	<b>3.97</b>	<b>100</b>	<b>13.6</b>	<b>100</b>						
EPD	CED	BW	WW	YW	RADG	YH	SC	Doc	HP	CEM	Milk	MW	MH	\$EN
<b>8</b>	<b>8</b>	<b>12.3</b>	<b>85</b>	<b>143</b>	<b>0.25</b>	<b>0.7</b>	<b>0.80</b>	<b>14</b>	<b>15</b>	<b>9</b>	<b>18</b>	<b>26</b>	<b>0.3</b>	<b>-7.61</b>
ACC	0.35	0.52	0.45	0.38	0.28	0.40	0.41	0.36	0.22	0.30	0.30	0.32	0.37	
EPD	CW	Marb	RE	Fat	\$W	\$F	\$G	\$QG	\$YG	\$B				
<b>68</b>	<b>68</b>	<b>0.61</b>	<b>1.04</b>	<b>0.023</b>	<b>81.19</b>	<b>104.12</b>	<b>42.30</b>	<b>33.77</b>	<b>8.53</b>	<b>173.77</b>				
ACC	0.40	0.36	0.36	0.32										

# Thames Angus Farm



**TAF 7333 Right Answer 1266**



Terminal

**ANGUS**

**Lot 28**

Calved: 11/07/2016 Tattoo: 1234 Reg. #: 19010777

Connealy Right Answer 746  
 TAF Right Answer 7333  
 TAF Erica 6121  
 Hoover Dam  
 TAF Princess 1234  
 TAF Princess 1282

BW	Adj. WW	WW Ratio	Adj. YW	YW Ratio	Adj. IMF	IMF Ratio	Adj. REA	REA Ratio						
<b>60</b>	<b>625</b>	<b>100</b>	<b>1087</b>	<b>100</b>										
EPD	CED	BW	WW	YW	RADG	YH	SC	Doc	HP	CEM	Milk	MW	MH	\$EN
<b>0</b>	<b>0</b>	<b>3.2</b>	<b>53</b>	<b>102</b>	<b>0.27</b>	<b>0.4</b>	<b>0.10</b>	<b>15</b>	<b>12.5</b>	<b>8</b>	<b>21</b>	<b>47</b>	<b>0.5</b>	<b>-3.81</b>
ACC	0.29	0.50	0.38	0.32	0.21	0.33	0.34	0.28	0.17	0.23	0.25	0.27	0.31	
EPD	CW	Marb	RE	Fat	\$W	\$F	\$G	\$QG	\$YG	\$B				
<b>45</b>	<b>45</b>	<b>0.51</b>	<b>0.35</b>	<b>-0.003</b>	<b>39.97</b>	<b>67.55</b>	<b>32.23</b>	<b>30.18</b>	<b>2.05</b>	<b>138.54</b>				
ACC	0.34	0.31	0.31	0.27										

# Thames Angus Farm



**TAF Upward 1286**



Balanced, Terminal

**ANGUS**

**Lot 29**

Calved: 11/4/2016 Tattoo: 1286 Reg. #: 18989380

Connealy Onward  
 Sitz Upward 307R  
 Sitz Henrietta Pride 81M  
 TAF Ultravox 297E 8902  
 TAF Princess 1057  
 TAF Princess 854

BW	Adj. WW	WW Ratio	Adj. YW	YW Ratio	Adj. IMF	IMF Ratio	Adj. REA	REA Ratio						
<b>70</b>	<b>693</b>	<b>116</b>	<b>1016</b>	<b>106</b>										
EPD	CED	BW	WW	YW	RADG	YH	SC	Doc	HP	CEM	Milk	MW	MH	\$EN
<b>5</b>	<b>5</b>	<b>2.2</b>	<b>62</b>	<b>110</b>	<b>0.23</b>	<b>0.8</b>	<b>1.34</b>	<b>10</b>	<b>12.4</b>	<b>7</b>	<b>31</b>	<b>26</b>	<b>0.5</b>	<b>-21.90</b>
ACC	0.23	0.36	0.31	0.21	0.05	0.05	0.05	0.05	0.05	0.17	0.23	0.05	0.05	
EPD	CW	Marb	RE	Fat	\$W	\$F	\$G	\$QG	\$YG	\$B				
<b>48</b>	<b>48</b>	<b>0.37</b>	<b>0.55</b>	<b>-0.002</b>	<b>62.08</b>	<b>68.90</b>	<b>28.37</b>	<b>24.29</b>	<b>4.08</b>	<b>134.45</b>				
ACC	0.05	0.05	0.05	0.05										



# Thames Angus Farm



**TAF 923 Upward 1456**



Balanced, Terminal

**ANGUS**

Calved: 11/25/2016 Tattoo: 1456 Reg. #: 18868125

Sitz Upward 307R

TAF Upward 923

TAF Princess 912

Connealy Right Answer 746

TAF Princess 1342

TAF Princess 1240

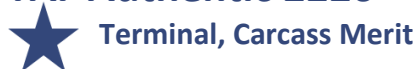
**Lot 30**

BW	Adj. WW	WW Ratio	Adj. YW	YW Ratio	Adj. IMF	IMF Ratio	Adj. REA	REA Ratio						
<b>71</b>	<b>681</b>	<b>114</b>	<b>945</b>	<b>109</b>										
	CED	BW	WW	YW	RADG	YH	SC	Doc	HP	CEM	Milk	MW	MH	\$EN
EPD	<b>6</b>	<b>2.4</b>	<b>65</b>	<b>117</b>	<b>0.20</b>	<b>0.4</b>	<b>1.15</b>	<b>18</b>	<b>14.0</b>	<b>10</b>	<b>27</b>	<b>13</b>	<b>0.4</b>	<b>-10.78</b>
ACC	0.32	0.52	0.45	0.35	0.23	0.35	0.36	0.30	0.18	0.25	0.28	0.29	0.34	
	CW	Marb	RE	Fat	\$W	\$F	\$G	\$QG	\$YG	\$B				
EPD	<b>42</b>	<b>0.18</b>	<b>0.33</b>	<b>0.025</b>	<b>68.17</b>	<b>76.49</b>	<b>13.91</b>	<b>15.02</b>	<b>-1.11</b>	<b>108.36</b>				
ACC	0.38	0.33	0.33	0.29										

# Thames Angus Farm



**TAF Authentic 2226**



Terminal, Carcass Merit

**ANGUS**

Calved: 11/7/2016 Tattoo: 2226 Reg. #: 19010101

G A R New Design 5050

EF Authentic 0829

2 Bar Objective 7836

TAF Limited Edition 6197

TAF Queen Elga 2182

TAF Queen Elga 2125

**Lot 31**

BW	Adj. WW	WW Ratio	Adj. YW	YW Ratio	Adj. IMF	IMF Ratio	Adj. REA	REA Ratio						
<b>65</b>	<b>707</b>	<b>119</b>	<b>1065</b>	<b>112</b>										
	CED	BW	WW	YW	RADG	YH	SC	Doc	HP	CEM	Milk	MW	MH	\$EN
EPD	<b>8</b>	<b>1.1</b>	<b>66</b>	<b>122</b>	<b>0.25</b>	<b>0.2</b>	<b>-0.34</b>	<b>26</b>	<b>10.1</b>	<b>9</b>	<b>38</b>	<b>-1</b>	<b>0.1</b>	<b>-25.60</b>
ACC	0.34	0.53	0.47	0.38	0.27	0.38	0.40	0.33	0.18	0.29	0.32	0.29	0.34	
	CW	Marb	RE	Fat	\$W	\$F	\$G	\$QG	\$YG	\$B				
EPD	<b>60</b>	<b>0.74</b>	<b>0.60</b>	<b>-0.014</b>	<b>83.06</b>	<b>83.81</b>	<b>41.46</b>	<b>37.79</b>	<b>3.67</b>	<b>164.50</b>				
ACC	0.39	0.34	0.34	0.30										

# Thames Angus Farm



**TAF 5877 H Dam 5466**



Calving Ease, Carcass Merit

**ANGUS**

Calved: 11/6/2016 Tattoo: 5166 Reg. #: 18868136

Hoover Dam

TAF H Dam 5877

TAF Pride 5787

TAF Objective 5351

TAF Pride 5373

TAF Pride 5273

**Lot 32**

BW	Adj. WW	WW Ratio	Adj. YW	YW Ratio	Adj. IMF	IMF Ratio	Adj. REA	REA Ratio						
<b>72</b>	<b>614</b>	<b>103</b>	<b>992</b>	<b>104</b>										
	CED	BW	WW	YW	RADG	YH	SC	Doc	HP	CEM	Milk	MW	MH	\$EN
EPD	<b>10</b>	<b>3.4</b>	<b>45</b>	<b>96</b>	<b>0.26</b>	<b>0.9</b>	<b>0.49</b>	<b>0</b>	<b>8.9</b>	<b>9</b>	<b>37</b>	<b>39</b>	<b>0.5</b>	<b>-23.09</b>
ACC	0.28	0.49	0.42	0.31	0.19	0.31	0.32	0.27	0.14	0.21	0.25	0.25	0.29	
	CW	Marb	RE	Fat	\$W	\$F	\$G	\$QG	\$YG	\$B				
EPD	<b>50</b>	<b>0.49</b>	<b>0.57</b>	<b>-0.013</b>	<b>43.56</b>	<b>57.55</b>	<b>34.45</b>	<b>29.41</b>	<b>5.04</b>	<b>143.63</b>				
ACC	0.35	0.29	0.30	0.26										

# Thames Angus Farm



## TAF Upward 7336



Calving Ease, Balanced, Terminal,  
Carcass Merit

Connealy Onward  
Sitz Upward 307R  
Sitz Henrietta Pride 81M  
Hoover Dam  
TAF Erica 6121  
TAF Erica 6081

### Lot 33

**ANGUS**

Calved: 11/9/2016 Tattoo: 7336 Reg. #: 18989379

BW	Adj. WW	WW Ratio	Adj. YW	YW Ratio	Adj. IMF	IMF Ratio	Adj. REA	REA Ratio						
<b>68</b>	<b>651</b>	<b>106</b>	<b>950</b>	<b>94</b>										
	CED	BW	WW	YW	RADG	YH	SC	Doc	HP	CEM	Milk	MW	MH	\$EN
EPD	<b>9</b>	<b>1.2</b>	<b>56</b>	<b>104</b>	<b>0.17</b>	<b>0</b>	<b>0.56</b>	<b>16</b>	<b>15.1</b>	<b>6</b>	<b>17</b>	<b>12</b>	<b>0.1</b>	<b>6.05</b>
ACC	0.36	0.54	0.47	0.40	0.30	0.40	0.42	0.36	0.26	0.32	0.35	0.36	0.40	
	CW	Marb	RE	Fat	\$W	\$F	\$G	\$QG	\$YG	\$B				
EPD	<b>42</b>	<b>0.51</b>	<b>0.66</b>	<b>0.010</b>	<b>51.37</b>	<b>53.37</b>	<b>35.41</b>	<b>30.18</b>	<b>5.23</b>	<b>121.08</b>				
ACC	0.43	0.38	0.38	0.35										

# TPC Farm Property



## TPC 5773 Daybreak 638

**ANGUS**

Calved: 11/7/2016 Tattoo: 638 Reg. #: 18681481

MCC Daybreak  
G A R Daybreak 5773  
G A R 5050 New Design 649  
EXAR Consensus 5481B  
TPC 337  
Double Bar Evergreen 17

### Lot 34

BW	Adj. WW	WW Ratio	Adj. YW	YW Ratio	Adj. IMF	IMF Ratio	Adj. REA	REA Ratio						
<b>82</b>	<b>771</b>	<b>113</b>	<b>1080</b>	<b>106</b>	<b>3.81</b>	<b>99</b>	<b>11.7</b>	<b>98</b>						
	CED	BW	WW	YW	RADG	YH	SC	Doc	HP	CEM	Milk	MW	MH	\$EN
EPD	<b>-1</b>	<b>1.8</b>	<b>66</b>	<b>124</b>	<b>0.27</b>	<b>0.7</b>	<b>-0.40</b>	<b>28</b>	<b>5.2</b>	<b>7</b>	<b>24</b>	<b>50</b>	<b>0.7</b>	<b>-14.19</b>
ACC	0.30	0.51	0.44	0.37	0.21	0.36	0.38	0.30	0.18	0.25	0.27	0.28	0.33	
	CW	Marb	RE	Fat	\$W	\$F	\$G	\$QG	\$YG	\$B				
EPD	<b>59</b>	<b>0.80</b>	<b>0.74</b>	<b>-0.014</b>	<b>61.37</b>	<b>86.39</b>	<b>45.07</b>	<b>39.42</b>	<b>5.65</b>	<b>166.15</b>				
ACC	0.38	0.33	0.34	0.31										

# TPC Farm Property



## TPC 639 CO&7 Gar 6443



Calving Ease, Balanced, Carcass Merit

G A R Progress  
G A R Progress 6443  
GAR 5050 New Design 789  
SydGen C C & 7  
R&R Lady 1145  
Ray/7L Lady 8066

**ANGUS**

Calved: 11/9/2016 Tattoo: 639 Reg. #: 18681482

### Lot 35

BW	Adj. WW	WW Ratio	Adj. YW	YW Ratio	Adj. IMF	IMF Ratio	Adj. REA	REA Ratio						
<b>55</b>	<b>603</b>	<b>89</b>	<b>969</b>	<b>95</b>	<b>3.91</b>	<b>101</b>	<b>12</b>	<b>101</b>						
	CED	BW	WW	YW	RADG	YH	SC	Doc	HP	CEM	Milk	MW	MH	\$EN
EPD	<b>13</b>	<b>0</b>	<b>51</b>	<b>97</b>	<b>0.27</b>	<b>0.2</b>	<b>0.26</b>	<b>20</b>	<b>15.9</b>	<b>9</b>	<b>35</b>	<b>50</b>	<b>0.5</b>	<b>-21.42</b>
ACC	0.32	0.52	0.45	0.38	0.23	0.39	0.40	0.33	0.21	0.27	0.29	0.31	0.36	
	CW	Marb	RE	Fat	\$W	\$F	\$G	\$QG	\$YG	\$B				
EPD	<b>41</b>	<b>0.78</b>	<b>0.62</b>	<b>-0.001</b>	<b>59.06</b>	<b>60.44</b>	<b>44.94</b>	<b>38.84</b>	<b>6.10</b>	<b>143.33</b>				
ACC	0.40	0.36	0.36	0.33										

# TPC Farm Property



**TPC 649 KMKAlliance GAR 5773**



Balanced, Terminal, Carcass Merit

**ANGUS**

**Lot 36**

Calved: 12/26/2016 Tattoo: 649 Reg. #:18681492

MCC Daybreak  
G A R Daybreak 5773  
G A R 5050 New Design 649  
KMK Alliance 6595 187  
Mel Erica 850  
Mel Erica 350

BW	Adj. WW	WW Ratio	Adj. YW	YW Ratio	Adj. IMF	IMF Ratio	Adj. REA	REA Ratio						
<b>90</b>	<b>790</b>	<b>100</b>	<b>1137</b>	<b>10</b>										
CED	BW	WW	YW	RADG	YH	SC	Doc	HP	CEM	Milk	MW	MH	\$EN	
EPD	<b>7</b>	<b>1.5</b>	<b>58</b>	<b>102</b>	<b>0.25</b>	<b>0.8</b>	<b>0.05</b>	<b>21</b>	<b>10.3</b>	<b>10</b>	<b>22</b>	<b>49</b>	<b>0.6</b>	<b>-5.18</b>
ACC	0.05	0.05	0.05	0.05	0.05	0.05	0.05	0.05	0.05	0.05	0.05	0.05		
CW	Marb	RE	Fat	\$W	\$F	\$G	\$QG	\$YG	\$B					
EPD	<b>46</b>	<b>0.73</b>	<b>0.64</b>	<b>0.015</b>	<b>54.37</b>	<b>66.54</b>	<b>41.12</b>	<b>37.46</b>	<b>3.66</b>	<b>151.13</b>				
ACC	0.05	0.05	0.05	0.05										

# Vista Farms Cattle Company



**EXAR Resistor 6222**



Balanced, Terminal, Carcass Merit

**ANGUS**

**Lot 37**

Calved: 1/4/2016 Tattoo: 6222 Reg. #:18401653

A A R TenX 7008 S A  
EXAR Resistor 3710B  
Sitz Henrietta Pride 643T  
B/R New Day 454  
Bentons 2305 ND 454-1209  
Bentons B878-2305

BW	Adj. WW	WW Ratio	Adj. YW	YW Ratio	Adj. IMF	IMF Ratio	Adj. REA	REA Ratio						
<b>67</b>	<b>721</b>	<b>104</b>	<b>1131</b>	<b>100</b>										
CED	BW	WW	YW	RADG	YH	SC	Doc	HP	CEM	Milk	MW	MH	\$EN	
EPD	<b>8</b>	<b>1.6</b>	<b>64</b>	<b>120</b>	<b>0.19</b>	<b>0.5</b>	<b>2.61</b>	<b>29</b>	<b>13.3</b>	<b>11</b>	<b>29</b>	<b>59</b>	<b>0.5</b>	<b>-20.42</b>
ACC	0.36	0.51	0.45	0.40	0.27	0.40	0.42	0.36	0.21	0.29	0.30	0.31	0.36	
CW	Marb	RE	Fat	\$W	\$F	\$G	\$QG	\$YG	\$B					
EPD	<b>54</b>	<b>0.53</b>	<b>0.99</b>	<b>-0.021</b>	<b>64.10</b>	<b>69.98</b>	<b>41.07</b>	<b>30.98</b>	<b>10.09</b>	<b>143.51</b>				
ACC	0.40	0.36	0.36	0.33										

# Vista Farms Cattle Company



**EXAR Resistol 6417**



Calving Ease, Balanced, Terminal, Carcass Merit

**ANGUS**

**Lot 38**

Calved: 7/15/2016 Tattoo: 6417 Reg. #: 18533795

A A R TenX 7008 S A  
EXAR Resistol 3710B  
Sitz Henrietta Pride 643T  
Connealy Consensus 7229  
EXAR Rita 3235  
Britt Rita 818

BW	Adj. WW	WW Ratio	Adj. YW	YW Ratio	Adj. IMF	IMF Ratio	Adj. REA	REA Ratio						
<b>70</b>	<b>658</b>	<b>111</b>	<b>991</b>	<b>106</b>										
CED	BW	WW	YW	RADG	YH	SC	Doc	HP	CEM	Milk	MW	MH	\$EN	
EPD	<b>9</b>	<b>0.5</b>	<b>60</b>	<b>105</b>	<b>0.21</b>	<b>0.3</b>	<b>1.69</b>	<b>24</b>	<b>11.1</b>	<b>9</b>	<b>26</b>	<b>25</b>	<b>0.3</b>	<b>-13.56</b>
ACC	0.05	0.36	0.32	0.27	0.05	0.05	0.30	0.05	0.05	0.05	0.13	0.05	0.05	
CW	Marb	RE	Fat	\$W	\$F	\$G	\$QG	\$YG	\$B					
EPD	<b>39</b>	<b>0.64</b>	<b>0.71</b>	<b>-0.023</b>	<b>59.95</b>	<b>58.51</b>	<b>44.33</b>	<b>34.74</b>	<b>9.59</b>	<b>130.45</b>				
ACC	0.05	0.05	0.05	0.05										

# Vista Farms Cattle Company



## EXAR Exclusive 553



### ANGUS

Calved: 07/24/2016 Tattoo: 6553 Reg. #:18530518

EXAR Denver 2002B  
EXAR Exclusive 4016B  
EXAR Forever Lady 6031  
G A R Predestined  
KCS Precision 8531  
G A R Precision 2610

## Lot 39

BW	Adj. WW	WW Ratio	Adj. YW	YW Ratio	Adj. IMF	IMF Ratio	Adj. REA	REA Ratio
<b>83</b>	<b>629</b>	<b>100</b>	<b>978</b>	<b>100</b>				

	CED	BW	WW	YW	RADG	YH	SC	Doc	HP	CEM	Milk	MW	MH	\$EN
EPD	5	2.9	50	88	0.18	0.3	0.70	16	7.4	9	24	19	.4	0.00
ACC	0.05	0.05	0.05	0.05	0.05	0.05	0.05	0.05	0.05	0.05	0.05	0.05	0.05	

	CW	Marb	RE	Fat	\$W	\$F	\$G	\$QG	\$YG	\$B
EPD	33	0.88	0.46	0.003	47.08	39.00	46.71	41.59	5.12	120.66
ACC	0.05	0.05	0.05	0.05						

# Vista Farms Cattle Company



## EXAR Advance 6623



### ANGUS

Calved: 8/11/2016 Tattoo: 6623 Reg. #:18570590

G A R Progress  
Basin Advance 3134  
Basin O Lass 1663  
EXAR Upshot 0562B  
EXAR Pollyanna 2276  
EXAR Pollyanna 9951

## Lot 40

BW	Adj. WW	WW Ratio	Adj. YW	YW Ratio	Adj. IMF	IMF Ratio	Adj. REA	REA Ratio
<b>77</b>	<b>598</b>	<b>101</b>	<b>953</b>	<b>102</b>				

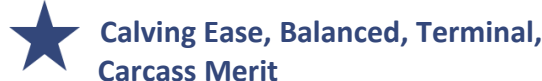
	CED	BW	WW	YW	RADG	YH	SC	Doc	HP	CEM	Milk	MW	MH	\$EN
EPD	9	1.5	54	103	0.19	0.5	0.22	8	7.4	10	33	26	0.3	-22.42
ACC	0.05	0.36	0.31	0.27	0.05	0.05	0.29	0.05	0.05	0.05	0.14	0.05	0.05	

	CW	Marb	RE	Fat	\$W	\$F	\$G	\$QG	\$YG	\$B
EPD	44	0.83	0.54	0.012	55.91	54.86	43.27	40.20	3.07	143.39
ACC	0.05	0.05	0.05	0.05						

# Vista Farms Cattle Company



## EXAR Denver 6805



### ANGUS

Calved: 9/7/2016 Tattoo: 6805 Reg. #:18586431

EXAR Upshot 0562B  
EXAR Denver 2002B  
Exar Royal Lass 1067  
Connealy Impression  
EXAR Blackcap 3301  
EXAR Blackcap 4230

## Lot 41

BW	Adj. WW	WW Ratio	Adj. YW	YW Ratio	Adj. IMF	IMF Ratio	Adj. REA	REA Ratio
<b>73</b>	<b>606</b>	<b>100</b>	<b>1200</b>	<b>100</b>				

	CED	BW	WW	YW	RADG	YH	SC	Doc	HP	CEM	Milk	MW	MH	\$EN
EPD	15	1.2	72	121	0.26	0.9	1.00	12	13.3	16	25	24	0.4	-10.58
ACC	0.35	0.35	0.44	0.39	0.26	0.40	0.42	0.36	0.25	0.32	0.33	0.34	0.39	

	CW	Marb	RE	Fat	\$W	\$F	\$G	\$QG	\$YG	\$B
EPD	49	0.44	0.49	0.012	78.00	88.29	28.82	27.38	1.44	145.02
ACC	0.41	0.37	0.37	0.34						

Final Test Weight	Frame Score	Test ADG	ADG Ratio	WDA	WDA Ratio
<b>1435</b>	<b>6.6</b>	<b>4.29</b>	<b>119</b>	<b>3.42</b>	<b>109</b>

\*\* Note Bull 6805 was on test at the North Alabama Bull Evaluation Center

# Vista Farms Cattle Company



**EXAR Resistol 6885**  
 ★ Calving Ease, Balanced, Terminal

A A R TenX 7008 S A  
 EXAR Resistol 3710B  
 Sitz Henrietta Pride 643T  
 Connealy Impression  
 EXAR Miss Rito 3150  
 EXAR Miss Rito 1202

**Lot 42**

Calved: 9/13/2016 Tattoo: 6885 Reg. #: 18586510

BW	Adj. WW	WW Ratio	Adj. YW	YW Ratio	Adj. IMF	IMF Ratio	Adj. REA	REA Ratio						
<b>62</b>	<b>625</b>	<b>100</b>	<b>907</b>	<b>100</b>										
	CED	BW	WW	YW	RADG	YH	SC	Doc	HP	CEM	Milk	MW	MH	\$EN
EPD	<b>12</b>	<b>0.4</b>	<b>54</b>	<b>98</b>	<b>0.18</b>	<b>0.2</b>	<b>1.46</b>	<b>18</b>	<b>13.2</b>	<b>11</b>	<b>31</b>	<b>23</b>	<b>0.2</b>	<b>-11.73</b>
ACC	0.05	0.05	0.05	0.05	0.05	0.05	0.05	0.05	0.05	0.05	0.05	0.05	0.05	
	CW	Marb	RE	Fat	\$W	\$F	\$G	\$QG	\$YG	\$B				
EPD	<b>38</b>	<b>0.41</b>	<b>0.79</b>	<b>-0.021</b>	<b>63.95</b>	<b>46.76</b>	<b>36.60</b>	<b>26.13</b>	<b>10.47</b>	<b>115.93</b>				
ACC	0.05	0.05	0.05	0.05										

# Vista Farms Cattle Company



**EXAR Advance 6959**  
 ★ Calving Ease, Balanced, Terminal

G A R Progress  
 Basin Advance 3134  
 Basin O Lass 1663  
 Connealy Consensus 7229  
 EXAR Joy 2607  
 Basin Joy 566T

**Lot 43**

Calved: 9/20/2016 Tattoo: 6959 Reg. #: 19014817

BW	Adj. WW	WW Ratio	Adj. YW	YW Ratio	Adj. IMF	IMF Ratio	Adj. REA	REA Ratio						
<b>68</b>	<b>583</b>	<b>100</b>	<b>935</b>	<b>100</b>										
	CED	BW	WW	YW	RADG	YH	SC	Doc	HP	CEM	Milk	MW	MH	\$EN
EPD	<b>10</b>	<b>0.1</b>	<b>62</b>	<b>100</b>	<b>0.15</b>	<b>0.2</b>	<b>0.67</b>	<b>8</b>	<b>6.7</b>	<b>9</b>	<b>33</b>	<b>24</b>	<b>0.5</b>	<b>-15.23</b>
ACC	0.05	0.05	0.05	0.05	0.05	0.05	0.05	0.05	0.05	0.05	0.05	0.05	0.05	
	CW	Marb	RE	Fat	\$W	\$F	\$G	\$QG	\$YG	\$B				
EPD	<b>37</b>	<b>1.01</b>	<b>0.44</b>	<b>0.020</b>	<b>78.06</b>	<b>48.59</b>	<b>46.74</b>	<b>44.58</b>	<b>2.16</b>	<b>127.61</b>				
ACC	0.05	0.05	0.05	0.05										

# Yankee Cutoff Angus Ranch



**YCAR Vinny Thunderbird 4009**  
 ★ Calving Ease, Balanced

S A V Final Answer 0035  
 S A V Thunderbird 9061  
 S A V Emblynette 7411  
 Hoover Dam  
 Pride Pristy of Conanga 4538  
 YCAR Vicki Rock Solid 410 W7

**Lot 44**

Calved: 12/31/2016 Tattoo: 4009 Reg. #: 18749576

BW	Adj. WW	WW Ratio	Wt. 2/13/18	YW Ratio	Adj. IMF	IMF Ratio	Adj. REA	REA Ratio						
<b>52</b>	<b>584</b>	<b>97</b>	<b>1211</b>											
	CED	BW	WW	YW	RADG	YH	SC	Doc	HP	CEM	Milk	MW	MH	\$EN
EPD	<b>12</b>	<b>-2.0</b>	<b>49</b>	<b>84</b>		<b>0.2</b>				<b>12</b>	<b>20</b>			<b>0.29</b>
ACC	0.24	0.34	0.29	0.23		0.05				0.18	0.20			
	CW	Marb	RE	Fat	\$W	\$F	\$G	\$QG	\$YG	\$B				
EPD	<b>28</b>	<b>0.52</b>	<b>0.37</b>	<b>0.018</b>	<b>46.44</b>	<b>35.05</b>	<b>33.81</b>	<b>30.53</b>	<b>3.28</b>	<b>98.34</b>				
ACC	0.05	0.05	0.05	0.05										

\*Adjusted yearling weight will be provided on supplement sheet at sale.

# Yankee Cutoff Angus Ranch



## YCAR Bangar Butkus 4011



Calving Ease, Balanced, Terminal

**ANGUS**

Calved: : 1/1/2017 Tattoo: 4011 Reg. #: 18749577

S A V Final Answer 0035  
SandPoint Butkus X797  
G A R Grid Maker 4603  
Mytty In Focus  
YCAR Beauty Everelda Mif 412  
YCAR Nina Everelda ENTENS W5

**Lot 45**

BW	Adj. WW	WW Ratio	Wt. 2/13/18	YW Ratio	Adj. IMF	IMF Ratio	Adj. REA	REA Ratio						
<b>65</b>	<b>603</b>	<b>100</b>	<b>1104</b>											
	CED	BW	WW	YW	RADG	YH	SC	Doc	HP	CEM	Milk	MW	MH	\$EN
EPD	<b>12</b>	<b>0.3</b>	<b>57</b>	<b>103</b>		<b>0.4</b>	<b>1.44</b>			<b>13</b>	<b>15</b>			<b>-2.04</b>
ACC	0.24	0.34	0.29	0.21		0.05	0.05			0.17	0.18			
	CW	Marb	RE	Fat	\$W	\$F	\$G	\$QG	\$YG	\$B				
EPD	<b>30</b>	<b>0.59</b>	<b>0.24</b>	<b>0.009</b>	<b>41.43</b>	<b>63.65</b>	<b>35.20</b>	<b>33.05</b>	<b>2.15</b>	<b>109.52</b>				
ACC	0.05	0.05	0.05	0.05										

\*Adjusted yearling weight will be provided on supplement sheet at sale.

# Yankee Cutoff Angus Ranch



## YCAR Fandazo Butkus 4017



Balanced, Terminal

**ANGUS**

Calved: 1/9/2017 Tattoo: 4017 Reg. #: 18749582

S A V Final Answer 0035  
SandPoint Butkus X797  
G A R Grid Maker 4603  
Hoover Dam  
YCAR Fannie Dam Dun Right 26  
YCAR Amy Freightliner 3982 T1

**Lot 46**

BW	Adj. WW	WW Ratio	Wt. 2/13/18	YW Ratio	Adj. IMF	IMF Ratio	Adj. REA	REA Ratio						
<b>73</b>	<b>572</b>	<b>95</b>	<b>1083</b>											
	CED	BW	WW	YW	RADG	YH	SC	Doc	HP	CEM	Milk	MW	MH	\$EN
EPD	<b>8</b>	<b>1.6</b>	<b>53</b>	<b>100</b>		<b>0.5</b>				<b>10</b>	<b>15</b>			<b>-0.86</b>
ACC	0.23	0.33	0.29	0.22		0.05				0.16	0.17			
	CW	Marb	RE	Fat	\$W	\$F	\$G	\$QG	\$YG	\$B				
EPD	<b>39</b>	<b>0.58</b>	<b>0.36</b>	<b>0.004</b>	<b>34.11</b>	<b>60.99</b>	<b>35.23</b>	<b>32.65</b>	<b>2.58</b>	<b>127.15</b>				
ACC	0.05	0.05	0.05	0.05										

\*Adjusted yearling weight will be provided on supplement sheet at sale.

# Yankee Cutoff Angus Ranch



## YCAR Mikeking Objective 4020



Balanced, Terminal

**ANGUS**

Calved: 1/26/2017 Tattoo: 4020 Reg. #: 18755571

S S Objective T510 0T26  
Ycar Odie Objective 50  
YCAR Alice Next Step W2  
Oak Bowery Bullseye 1037  
YCAR Mabel Bullseye 4925 34  
YCAR ANITA2 Freightliner 52

**Lot 47**

BW	Adj. WW	WW Ratio	Wt. 2/13/18	YW Ratio	Adj. IMF	IMF Ratio	Adj. REA	REA Ratio						
<b>63</b>	<b>657</b>	<b>109</b>	<b>1058</b>											
	CED	BW	WW	YW	RADG	YH	SC	Doc	HP	CEM	Milk	MW	MH	\$EN
EPD	<b>8</b>	<b>0.7</b>	<b>58</b>	<b>97</b>		<b>0.3</b>	<b>0.72</b>			<b>9</b>	<b>25</b>			<b>-11.73</b>
ACC	0.16	0.30	0.25	0.14		0.05	0.05			0.07	0.10			
	CW	Marb	RE	Fat	\$W	\$F	\$G	\$QG	\$YG	\$B				
EPD	<b>30</b>	<b>0.58</b>	<b>0.36</b>	<b>-0.007</b>	<b>56.08</b>	<b>52.01</b>	<b>38.19</b>	<b>32.65</b>	<b>5.54</b>	<b>110.19</b>				
ACC	0.05	0.05	0.05	0.05										

\*Adjusted yearling weight will be provided on supplement sheet at sale.

# Mississippi State University Beef Unit



**MSU Made Right D045**  
★ Calving Ease, Balanced, Terminal

**ANGUS**

Calved: 9/4/2016 Tattoo: D045 Reg. #: 19028897

B C Lookout 7024  
Limestone Made Right W935  
O C C Blackbird 736K  
S A V Final Answer 0035 II  
MSU Entense Answer B021  
MSU Entense W083 Z173

**Lot 48**

<i>BW</i>	<i>Adj. WW</i>	<i>WW Ratio</i>	<i>Adj. YW</i>	<i>YW Ratio</i>	<i>Adj. IMF</i>	<i>IMF Ratio</i>	<i>Adj. REA</i>	<i>REA Ratio</i>						
<b>60</b>	<b>625</b>	<b>108</b>	<b>879</b>	<b>94</b>	<b>3.58</b>	<b>109</b>	<b>10.9</b>	<b>94</b>						
<i>EPD</i>	<i>CED</i>	<i>BW</i>	<i>WW</i>	<i>YW</i>	<i>RADG</i>	<i>YH</i>	<i>SC</i>	<i>Doc</i>	<i>HP</i>	<i>CEM</i>	<i>Milk</i>	<i>MW</i>	<i>MH</i>	<i>SEN</i>
<b>11</b>	<b>0.24</b>	<b>-0.1</b>	<b>53</b>	<b>78</b>	<b>0.11</b>	<b>-0.5</b>	<b>-0.37</b>	<b>4</b>	<b>10.7</b>	<b>7</b>	<b>21</b>	<b>-10</b>	<b>-0.07</b>	<b>5.21</b>
<i>ACC</i>		0.35	0.30	0.27	0.05	0.35	0.31	0.05	0.05	0.14	0.14	0.05	0.05	
<i>EPD</i>	<i>CW</i>	<i>Marb</i>	<i>RE</i>	<i>Fat</i>	<i>\$W</i>	<i>\$F</i>	<i>\$G</i>	<i>\$QG</i>	<i>\$YG</i>	<i>\$B</i>				
<b>10</b>	<b>0.21</b>	<b>0.38</b>	<b>0.40</b>	<b>0.048</b>	<b>57.25</b>	<b>24.82</b>	<b>28.29</b>	<b>24.76</b>	<b>3.53</b>	<b>55.55</b>				
<i>ACC</i>		0.16	0.21	0.17										

# Mississippi State University Beef Unit



**MSU Ten X D077**  
★ Balanced, Terminal

**ANGUS**

Calved: 9/20/2016 Tattoo: D077 Reg. #: 18834590

Mytty In Focus  
A A R Ten X 7008 S A  
A A R Lady Kelton 5551  
S A V Bushwacker 2095  
Southern 1137 Lucy 6068  
SAV Lucy 137

**Lot 49**

<i>BW</i>	<i>Adj. WW</i>	<i>WW Ratio</i>	<i>Adj. YW</i>	<i>YW Ratio</i>	<i>Adj. IMF</i>	<i>IMF Ratio</i>	<i>Adj. REA</i>	<i>REA Ratio</i>						
<b>64</b>	<b>613</b>	<b>106</b>	<b>1011</b>	<b>108</b>	<b>3.34</b>	<b>102</b>	<b>12.1</b>	<b>104</b>						
<i>EPD</i>	<i>CED</i>	<i>BW</i>	<i>WW</i>	<i>YW</i>	<i>RADG</i>	<i>YH</i>	<i>SC</i>	<i>Doc</i>	<i>HP</i>	<i>CEM</i>	<i>Milk</i>	<i>MW</i>	<i>MH</i>	<i>SEN</i>
<b>7</b>	<b>0.24</b>	<b>0.7</b>	<b>58</b>	<b>108</b>	<b>0.23</b>	<b>0.4</b>	<b>0.45</b>	<b>7</b>	<b>10.2</b>	<b>10</b>	<b>26</b>	<b>57</b>	<b>0.6</b>	<b>-16.40</b>
<i>ACC</i>		0.37	0.32	0.30	0.05	0.36	0.33	0.05	0.05	0.20	0.23	0.05	0.05	
<i>EPD</i>	<i>CW</i>	<i>Marb</i>	<i>RE</i>	<i>Fat</i>	<i>\$W</i>	<i>\$F</i>	<i>\$G</i>	<i>\$QG</i>	<i>\$YG</i>	<i>\$B</i>				
<b>43</b>	<b>0.28</b>	<b>0.61</b>	<b>0.45</b>	<b>0.006</b>	<b>53.70</b>	<b>72.10</b>	<b>36.55</b>	<b>33.77</b>	<b>2.78</b>	<b>137.95</b>				
<i>ACC</i>		0.24	0.27	0.24										

# Mississippi State University Beef Unit



**MSU Final Answer D081**  
★ Calving Ease, Balanced, Terminal

**ANGUS**

Calved: 9/22/2016 Tattoo: D081 Reg. #: 18834591

Sitz Traveler 8180  
S A V Final Answer 0035 II  
S A V Emulous 8145  
Oak Bowery Bullseye 1037  
MSU Southern Lady Y006  
Southern Lady 1925

**Lot 50**

<i>BW</i>	<i>Adj. WW</i>	<i>WW Ratio</i>	<i>Adj. YW</i>	<i>YW Ratio</i>	<i>Adj. IMF</i>	<i>IMF Ratio</i>	<i>Adj. REA</i>	<i>REA Ratio</i>						
<b>65</b>	<b>578</b>	<b>100</b>	<b>999</b>	<b>107</b>	<b>2.63</b>	<b>80</b>	<b>12.2</b>	<b>105</b>						
<i>EPD</i>	<i>CED</i>	<i>BW</i>	<i>WW</i>	<i>YW</i>	<i>RADG</i>	<i>YH</i>	<i>SC</i>	<i>Doc</i>	<i>HP</i>	<i>CEM</i>	<i>Milk</i>	<i>MW</i>	<i>MH</i>	<i>SEN</i>
<b>9</b>	<b>0.22</b>	<b>0.5</b>	<b>53</b>	<b>95</b>	<b>0.24</b>	<b>0.3</b>	<b>1.44</b>	<b>20</b>	<b>11.5</b>	<b>10</b>	<b>23</b>	<b>47</b>	<b>0.3</b>	<b>-6.96</b>
<i>ACC</i>		0.35	0.31	0.26	0.05	0.34	0.31	0.05	0.05	0.15	0.15	0.05	0.05	
<i>EPD</i>	<i>CW</i>	<i>Marb</i>	<i>RE</i>	<i>Fat</i>	<i>\$W</i>	<i>\$F</i>	<i>\$G</i>	<i>\$QG</i>	<i>\$YG</i>	<i>\$B</i>				
<b>33</b>	<b>0.24</b>	<b>0.32</b>	<b>0.43</b>	<b>0.019</b>	<b>48.79</b>	<b>62.85</b>	<b>25.02</b>	<b>22.05</b>	<b>2.97</b>	<b>114.26</b>				
<i>ACC</i>		0.19	0.23	0.20										

# Mississippi State University Beef Unit



**MSU Traveler D095**



**ANGUS**

Calved: 9/30/2016 Tattoo: D095 Reg. #:18834592

Sitz Traveler 8180  
S A V 8180 Traveler 004  
Boyd Forever Lady 8003  
SydGen C C & 7  
MSU Entense 4033 Y046  
M S U Entense 878 4033

**Lot 51**

BW	Adj. WW	WW Ratio	Adj. YW	YW Ratio	Adj. IMF	IMF Ratio	Adj. REA	REA Ratio						
73	550	96	914	100	2.99	100	11.3	100						
	CED	BW	WW	YW	RADG	YH	SC	Doc	HP	CEM	Milk	MW	MH	\$EN
EPD	6	1.9	49	88	0.23	0.7	1.14	4	12.6	11	27	52	0.5	-8.88
ACC	0.05	0.05	0.05	0.05	0.05	0.05	0.05	0.05	0.05	0.05	0.05	0.05	0.05	
	CW	Marb	RE	Fat	\$W	\$F	\$G	\$QG	\$YG	\$B				
EPD	36	0.26	0.46	0.014	46.83	47.13	22.55	19.18	3.37	110.16				
ACC	0.05	0.05	0.05	0.05										

# MBK Cattle



**MBK Pale Rider Z82D**



**Simmental**

Calved: 10/17/2016 Tattoo: Z82D Reg. #:3253034

W/C Paleface 756X  
HBOZ Pale Rider 604A  
SSF Blk Betty W878  
Kriz/SVF T405  
PS Goldilox  
SVF Gold Star U082

**Lot 52**

BW	Adj. WW	WW Ratio	Adj. YW	YW Ratio	Adj. IMF	IMF Ratio	Adj. REA	REA Ratio		
86	669	111	1072	104						
	CE	BW	WW	YW	ADG	MCE	Milk	MWW	Stay	Doc
EPD	9.7	1.4	71.6	108.4	0.23	4.3	20.2	56	7.3	11.1
ACC	0.16	0.33	0.29	0.33	0.33	0.11	0.12	0.17	0.10	0.08
	CW	YG	Marb	BF	REA	Shr	API	TI		
EPD	36.3	-0.28	0.19	-0.056	0.77	-0.38	121.8	76.0		
ACC	0.27	0.10	0.10	0.06	0.08	0.04				

# MBK Cattle



**MBK Mr 010D**



**SimAngus (3/8 SM, 5/8 AN)**

Calved: 3/3/2016 Tattoo: 010D Reg. #:3162201

LMF Herd Master  
MBC Mr Gemstone Z9  
MBC Ebony Ruby S1  
BR Midland  
MSU MAFES S010  
M S U Right Time 039 4187

**Lot 53**

BW	Adj. WW	WW Ratio	Adj. YW	YW Ratio	Adj. IMF	IMF Ratio	Adj. REA	REA Ratio		
80	637	100	926	100						
	CE	BW	WW	YW	ADG	MCE	Milk	MWW	Stay	Doc
EPD	15.7	-2.1	53.4	86.5	0.21	7.2	19.3	46	6.6	9.8
ACC	0.25	0.27	0.22	0.33	0.21	0.18	0.17	0.18	0.06	0.05
	CW	YG	Marb	BF	REA	Shr	API	TI		
EPD	18.8	-0.16	0.44	-0.018	0.77	-0.28	124.2	68.0		
ACC	0.19	0.08	0.06	0.06	0.08	0.01				