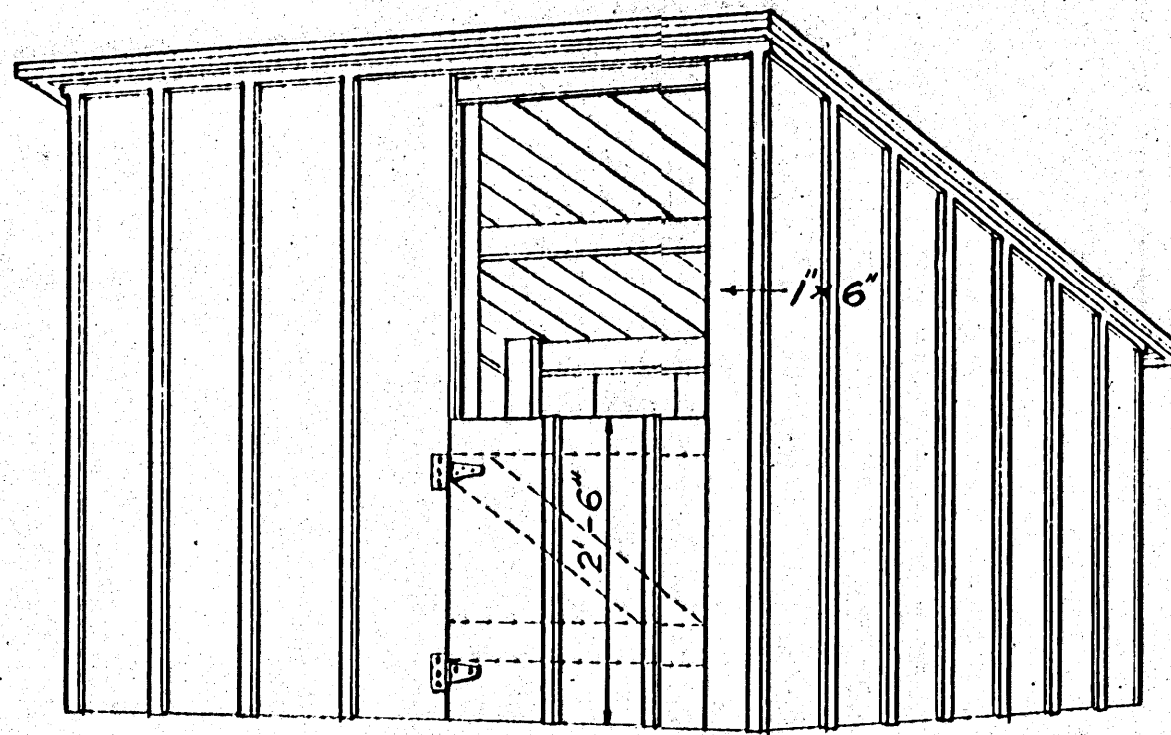
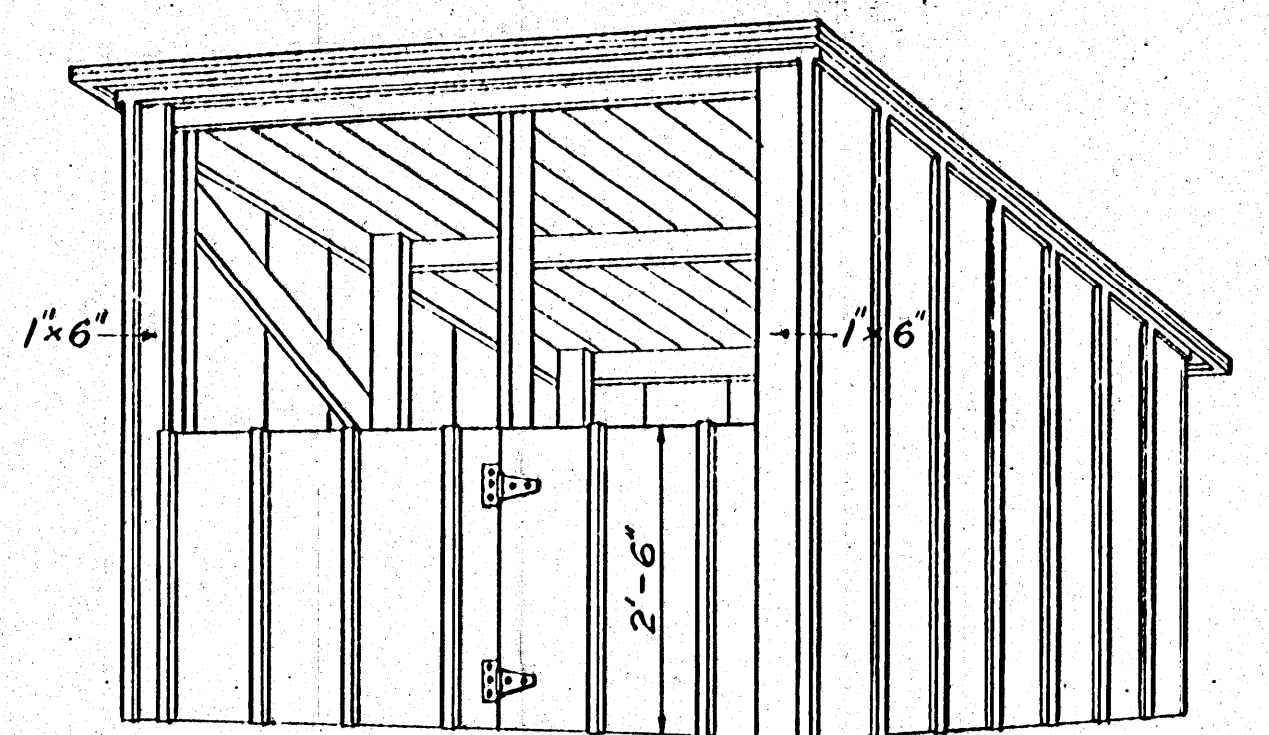


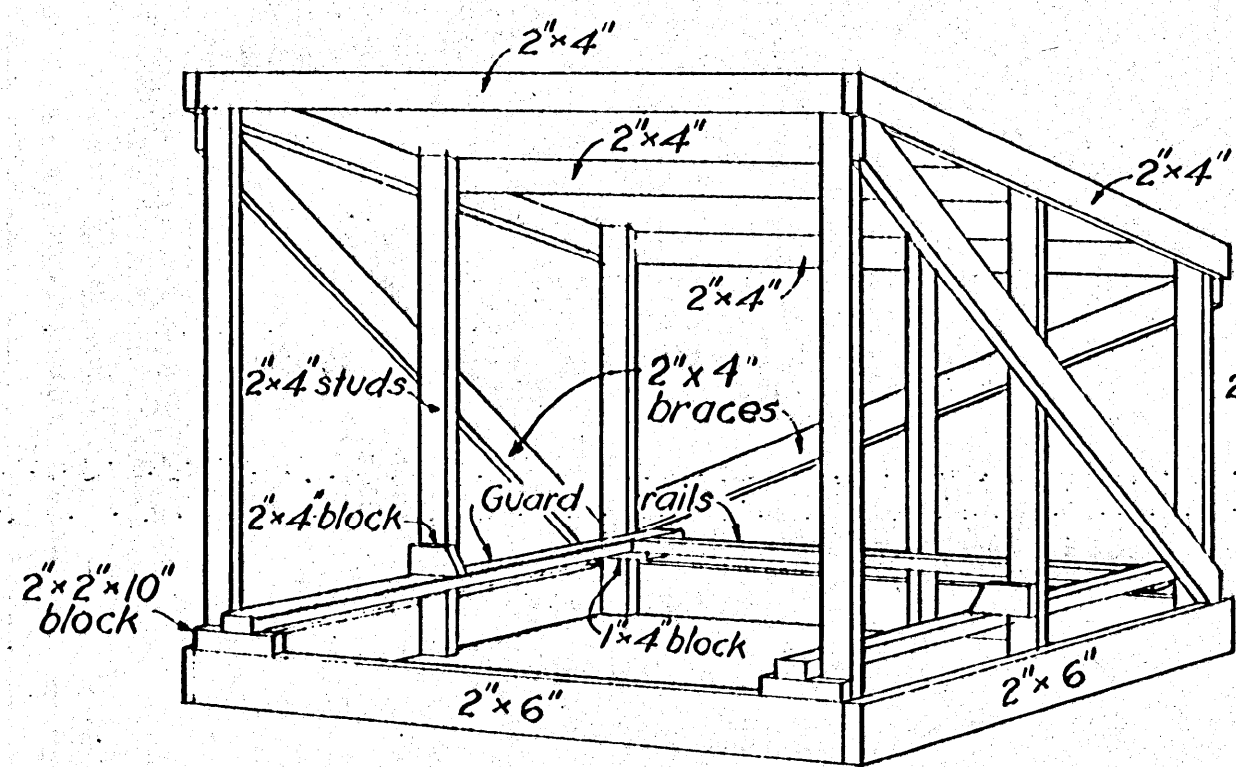
OPEN FRONT



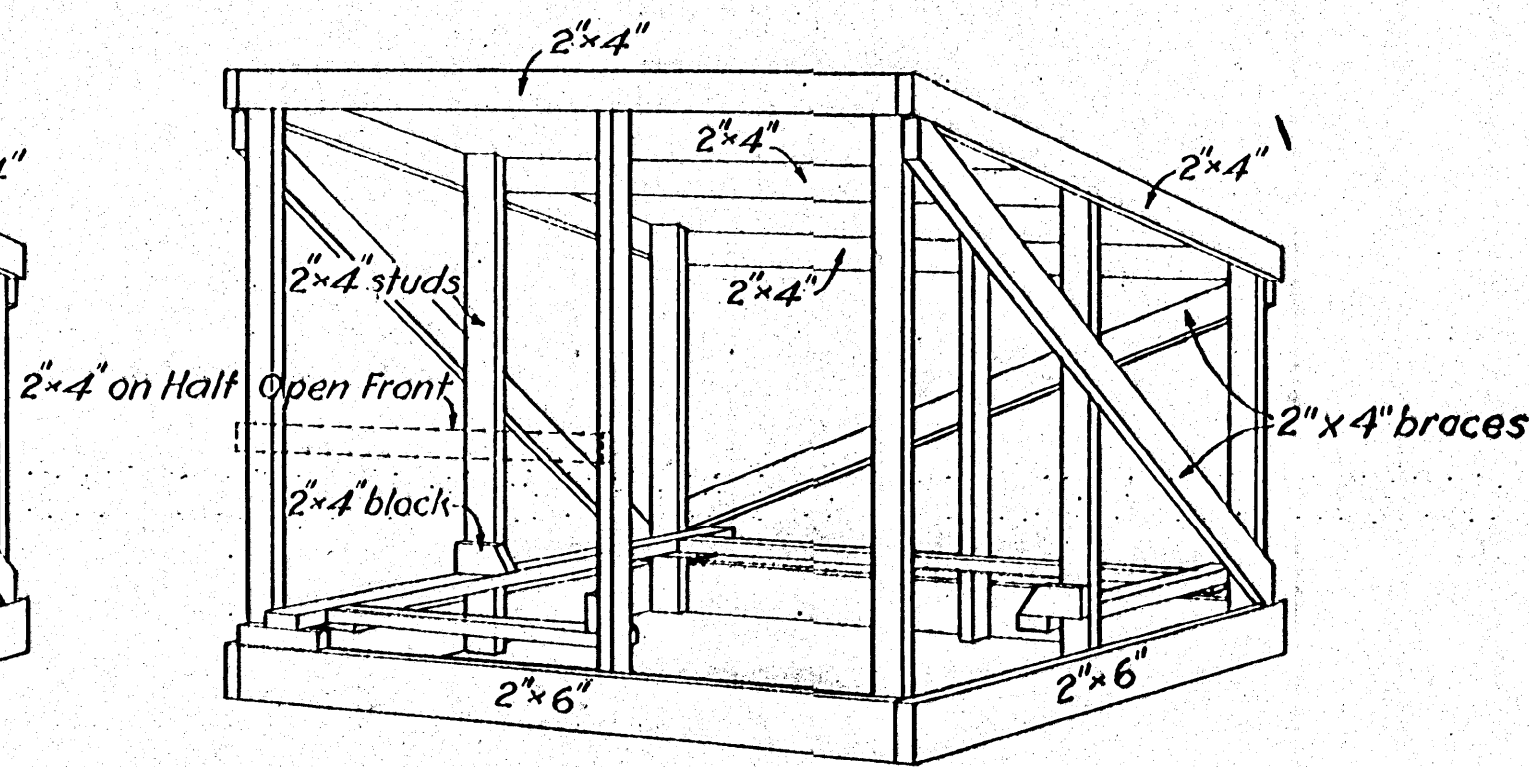
CLOSED FRONT  
HALF HEIGHT DOOR



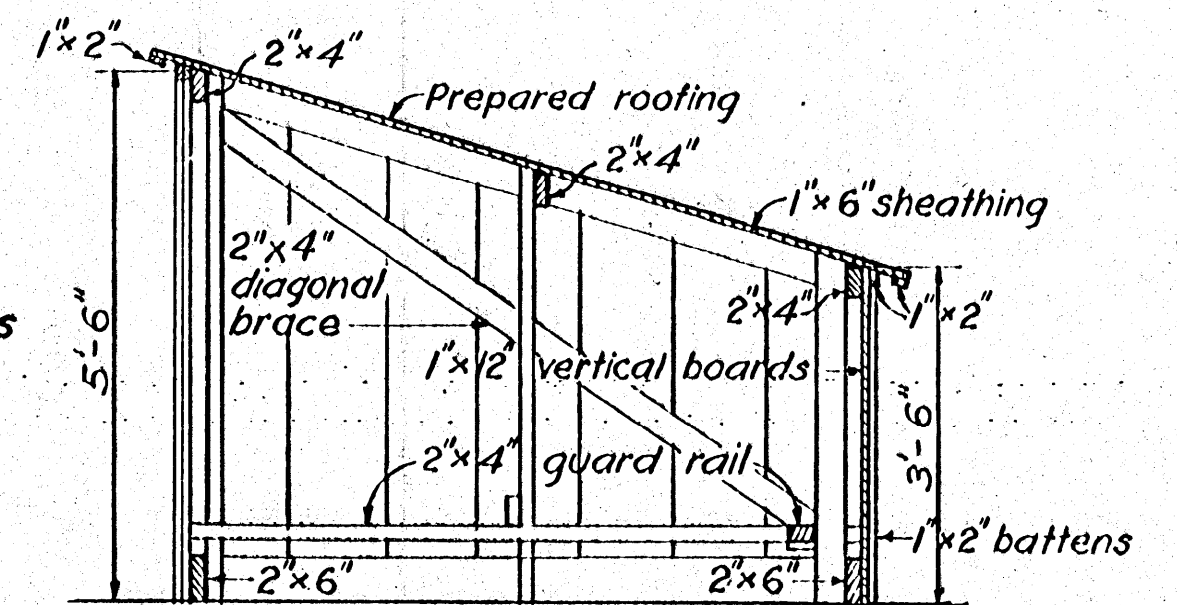
HALF OPEN FRONT  
HALF HEIGHT DOOR



FRAMING  
OPEN FRONT

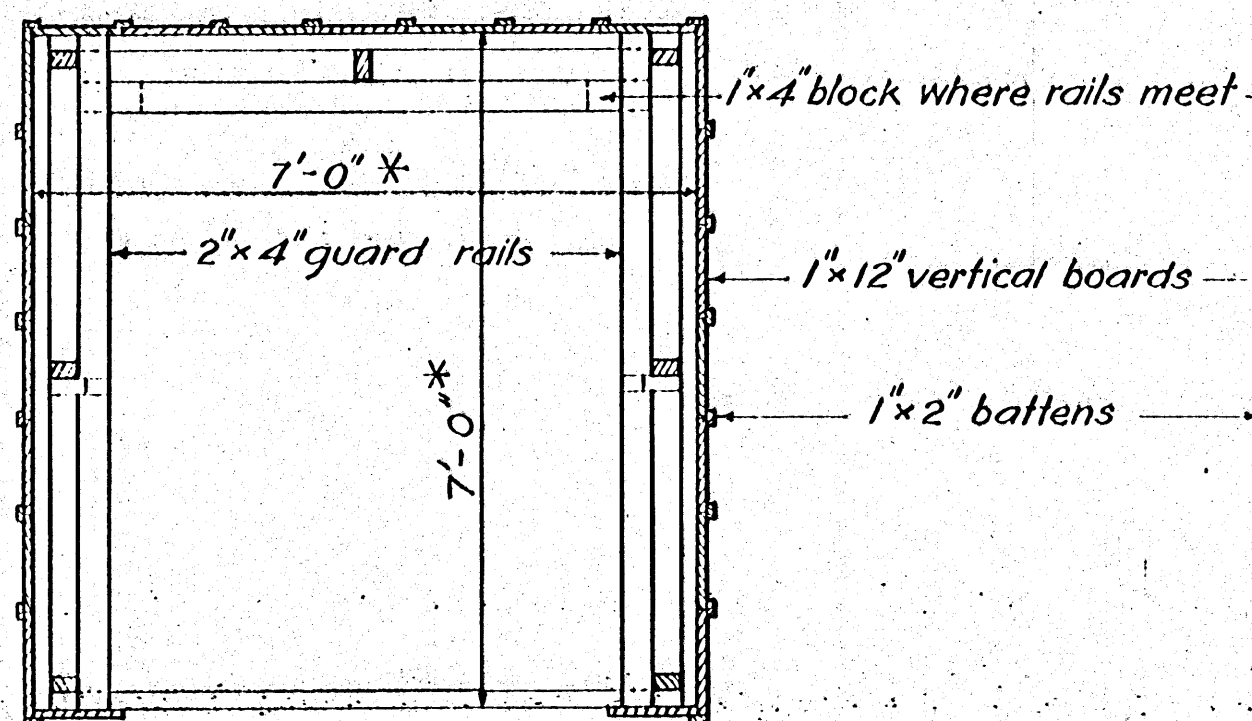


FRAMING  
CLOSED FRONT

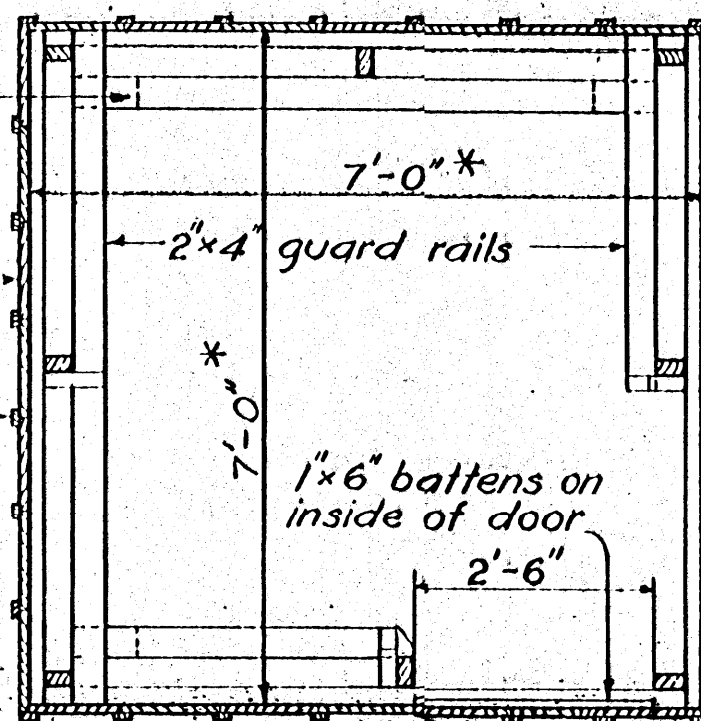


SECTION A-A

NOTES: All framing members in contact with ground to be treated with creosote or other wood preservative.  
Nail siding to all diagonal braces.  
\* For sows weighing more than 325 lbs. increase size of house to 8'-0" x 8'-0".



PLAN  
OPEN FRONT



PLAN  
CLOSED FRONT

Scale: 1/2" = 1'-0"

COOPERATIVE EXTENSION WORK IN AGRICULTURE AND HOME ECONOMICS STATE OF MISSISSIPPI MISSISSIPPI STATE UNIVERSITY UNITED STATES DEPARTMENT OF AGRICULTURE COOPERATING		
INDIVIDUAL PORTABLE HOG HOUSE		
USDA	EX. 5127	SHEET 1 OF 1