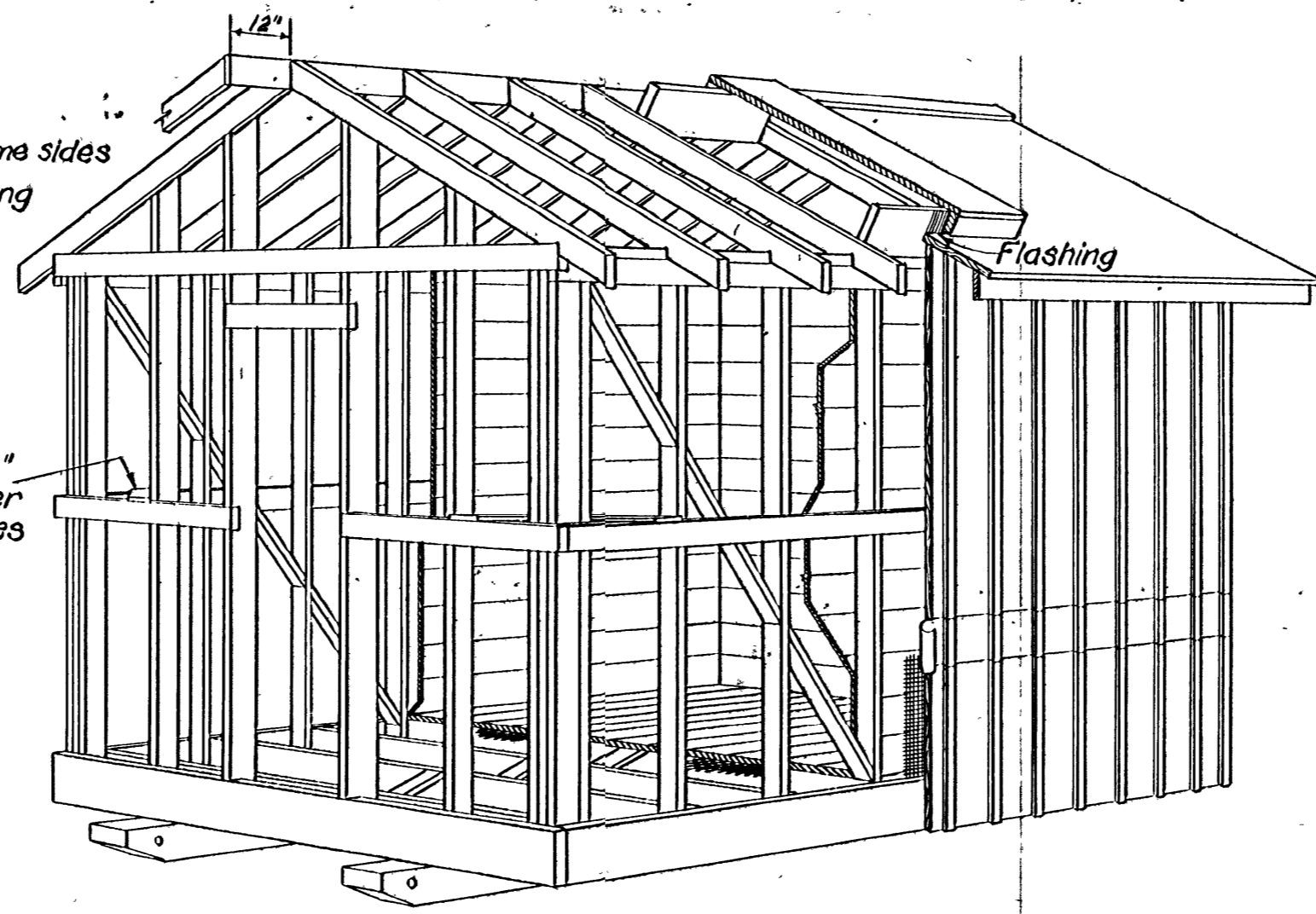
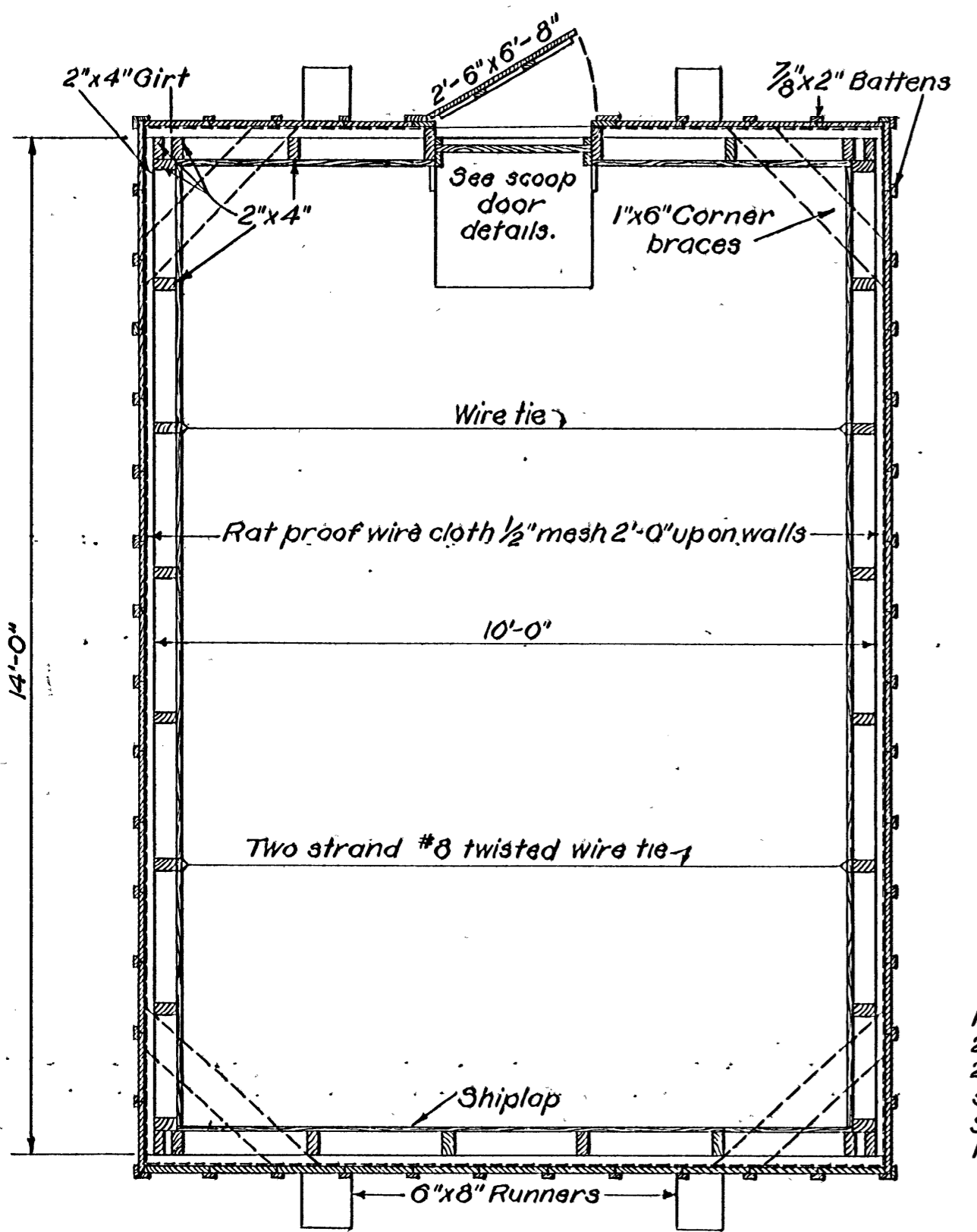


SECTION

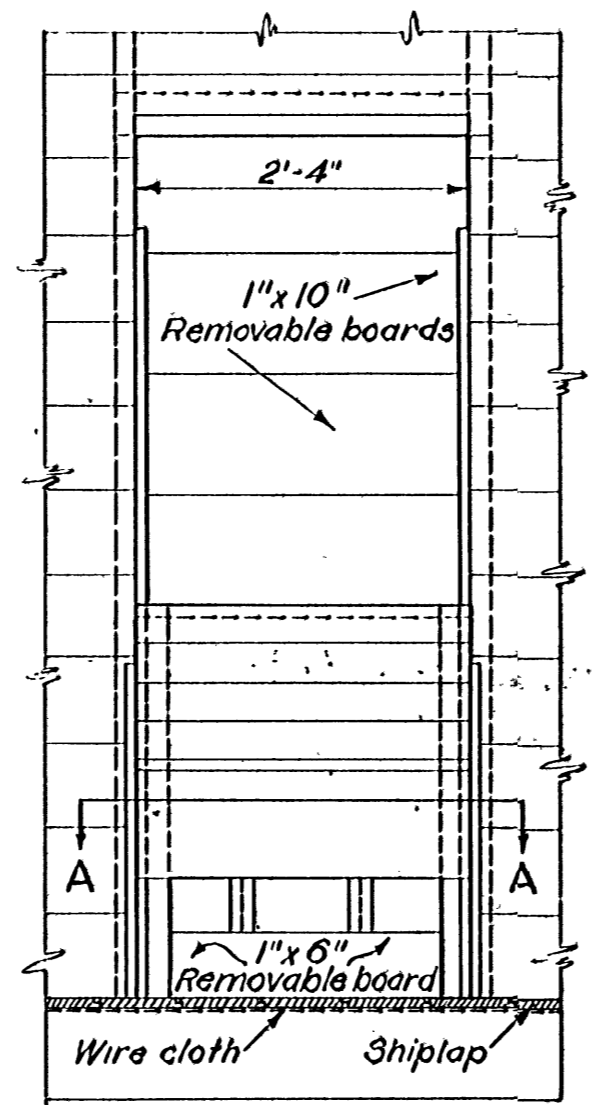


PERSPECTIVE VIEW SHOWING FRAMING

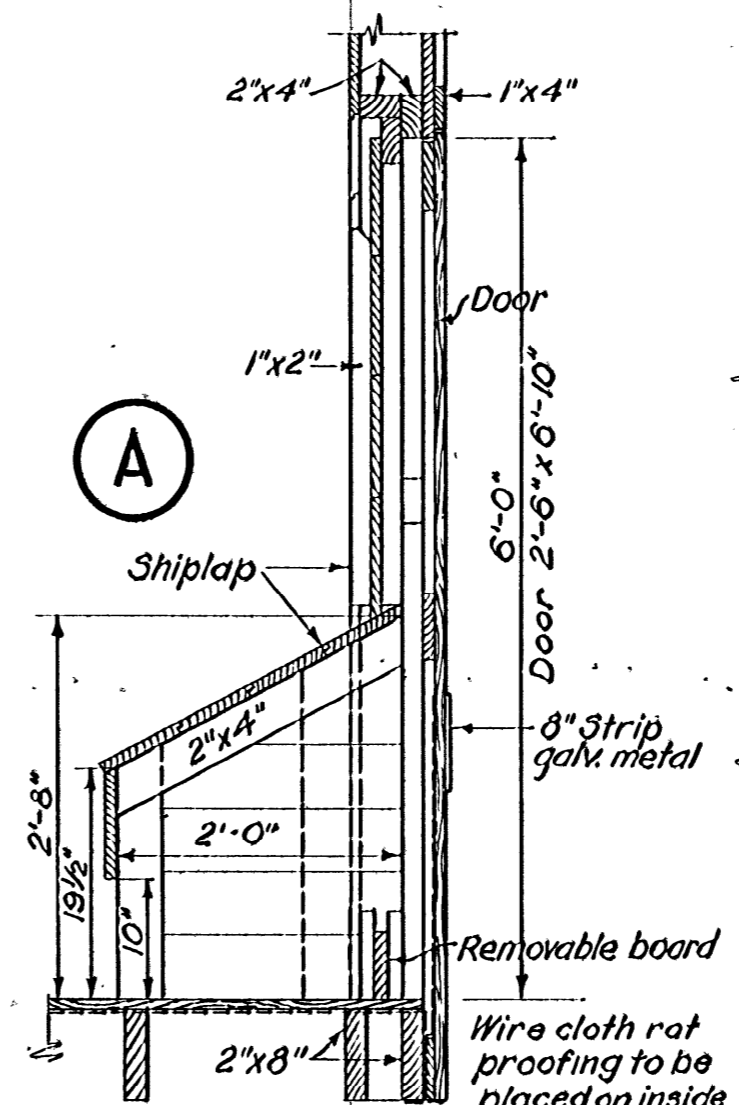
- ### BILL OF MATERIALS
- 2 - 6"x8"x16'- Fir runners.
 - 1 - 2"x10"x 6'- Hatch door frame.
 - 2 - 2"x8"x14'- Bottom girts.
 - 2 - 2"x8"x11'- Bottom girts.
 - 8 - 2"x8"x10'- Joists.
 - 2 - 2"x6"x14'- Plates.
 - 2 - 2"x6"x10'- Studs at door opening.
 - 1 - 2"x6"x8'- Hatch door frame.
 - 12 - 2"x4"x16'- Studs.
 - 19 - 2"x4"x14'- Girts, rafters, & hatch door cover
 - 9 - 2"x4"x10'- Studs, girts & braces.
 - 3 - 1"x6"x16'- Ridge, corner braces & door battens.
 - 800ft. B.M. 1"x8" Shiplap floor, roof, & interior sheathing.
 - 480ft. B.M. 1"x12" Siding (16ft. lengths).
 - 450lin. ft. 1"x2" Battens.
 - 28lin. ft. 1"x3" Cross bridging.
 - 8 - 1"x4"x16'- Ridge cap & fascia boards.
 - 230sq. ft. roof area to be covered with prepared roofing.
 - 250sq. ft. wire cloth 1/2" mesh.
 - 60 lin. ft. #28 galv. sheet metal 8" wide.
 - Hardware, nails, paint & wire ties not included
- MATERIAL FOR SCOOP DOOR (A)**
- 1 - 2"x4"x12'- Frame & top stop.
 - 1 - 1"x10"x12'- Removable boards & box end.
 - 2 - 1"x8"x14'- Shiplap for box top sides.
 - 1 - 1"x4"x 5'- Side cleats
 - 1 - 1"x2"x6'- Stops.
- MATERIAL FOR SCOOP DOOR (B)**
- 1 - 2"x4"x 3'- Head.
 - 2 - 1"x12"x10'- Removable boards.
 - 1 - 1"x3"x12'- Stops.



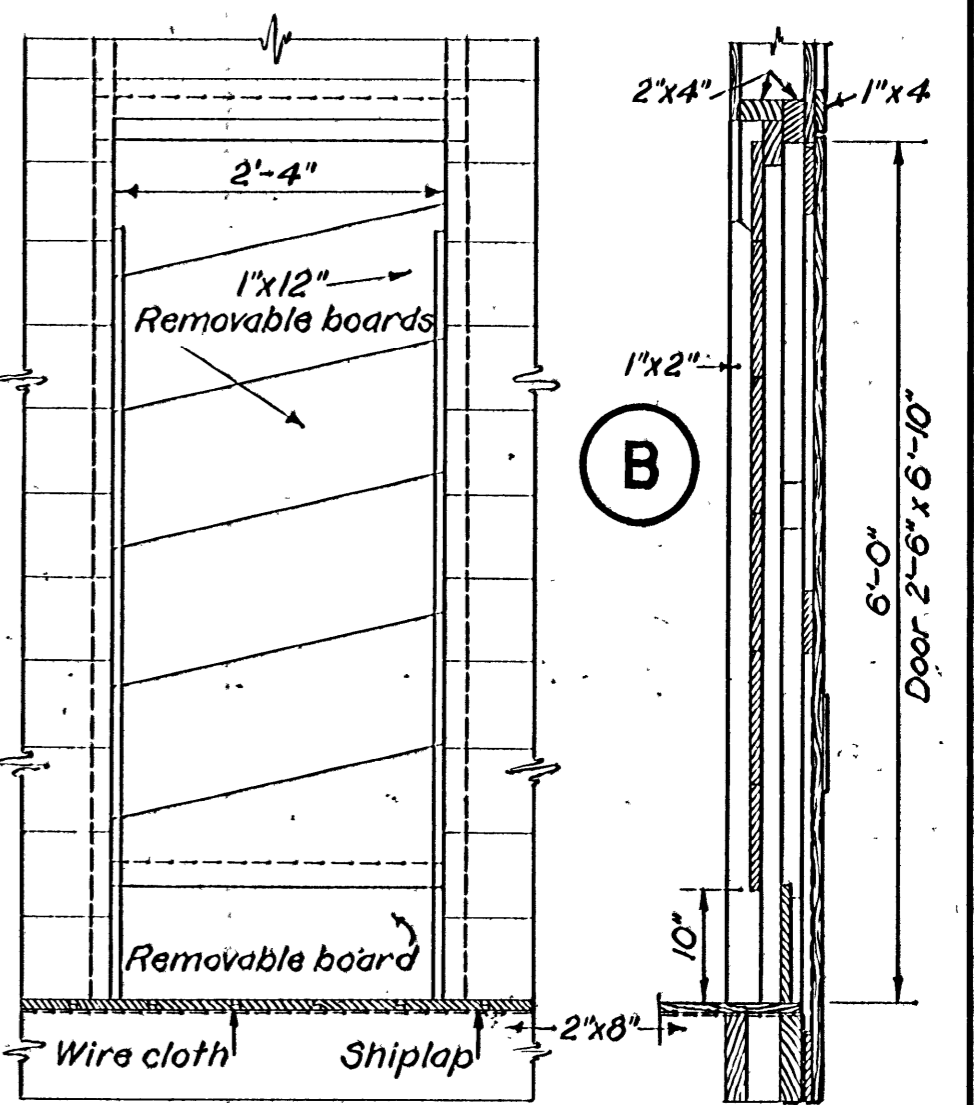
PLAN
Scale 1/2" = 1'-0"



ELEVATION

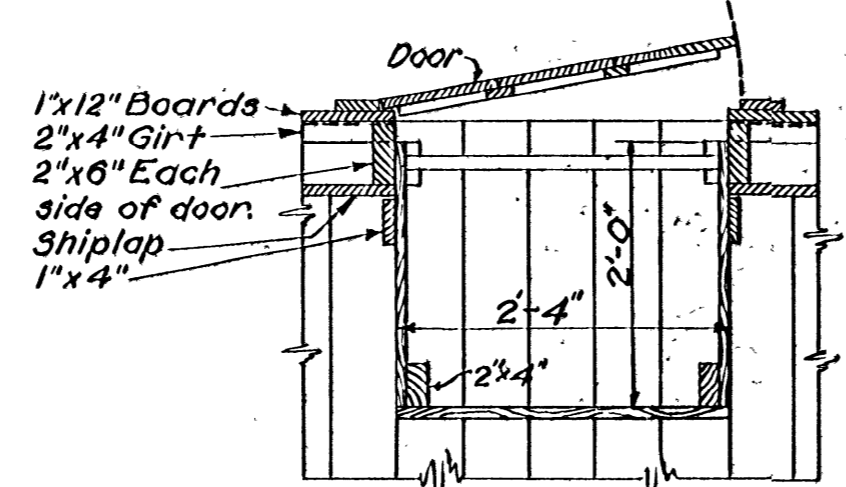


SECTION



ELEVATION

SECTION



PLAN A-A

SCOOP DOOR DETAILS

Scale 3/4" = 1'-0"

NOTE:
Use detail (A) where granary is used for daily feeding.
Use detail (B) where granary is used for storage only.

660 BUSHEL CAPACITY.

COOPERATIVE EXTENSION WORK IN
AGRICULTURE AND HOME ECONOMICS
STATE OF MISSISSIPPI
MISSISSIPPI STATE UNIVERSITY
U.S. DEPT. OF AGRICULTURE COOPERATING.

MOVABLE GRAIN BIN

U.S.D.A. Ex. 5588 SHEET 1 OF 1