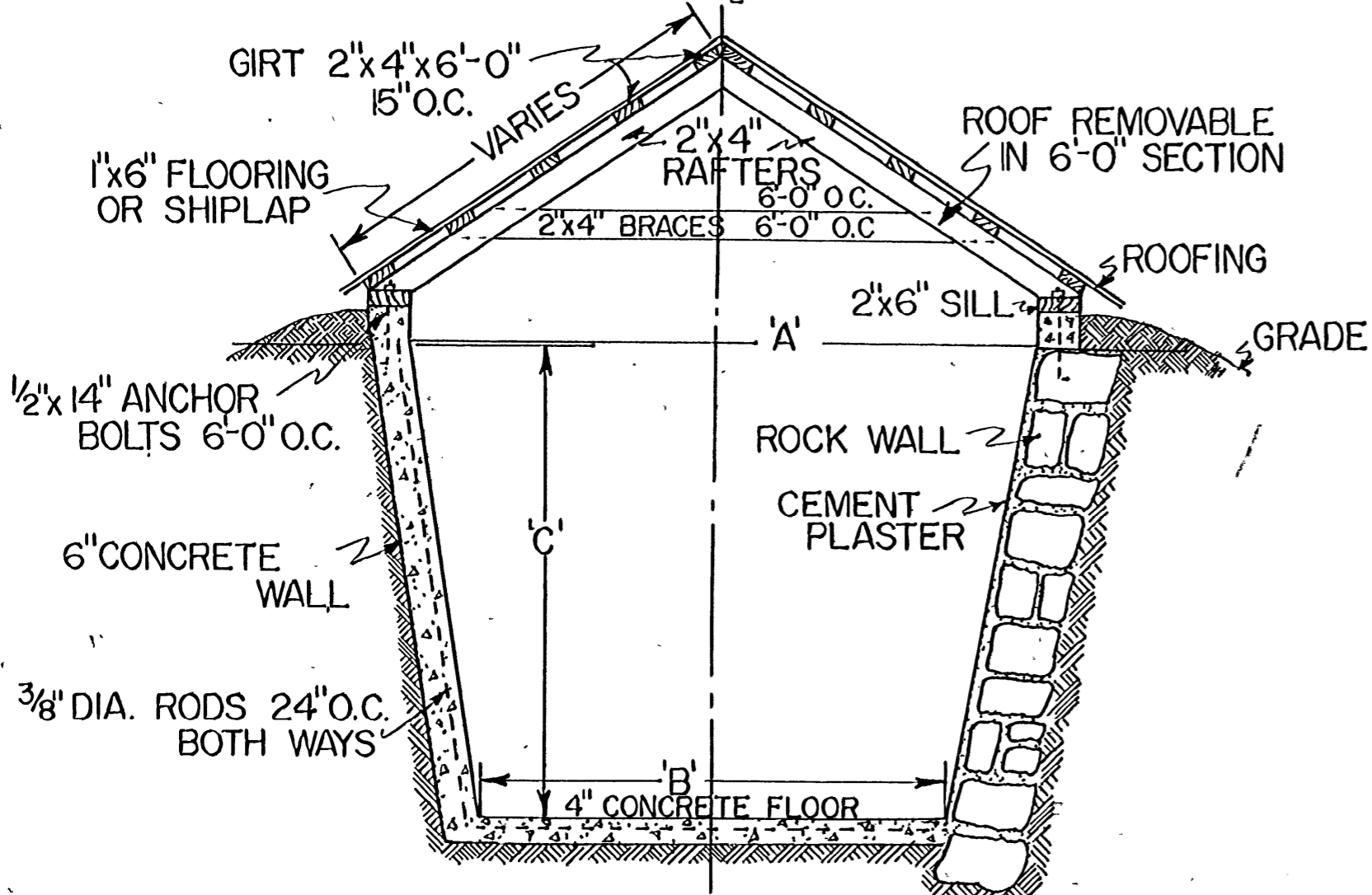


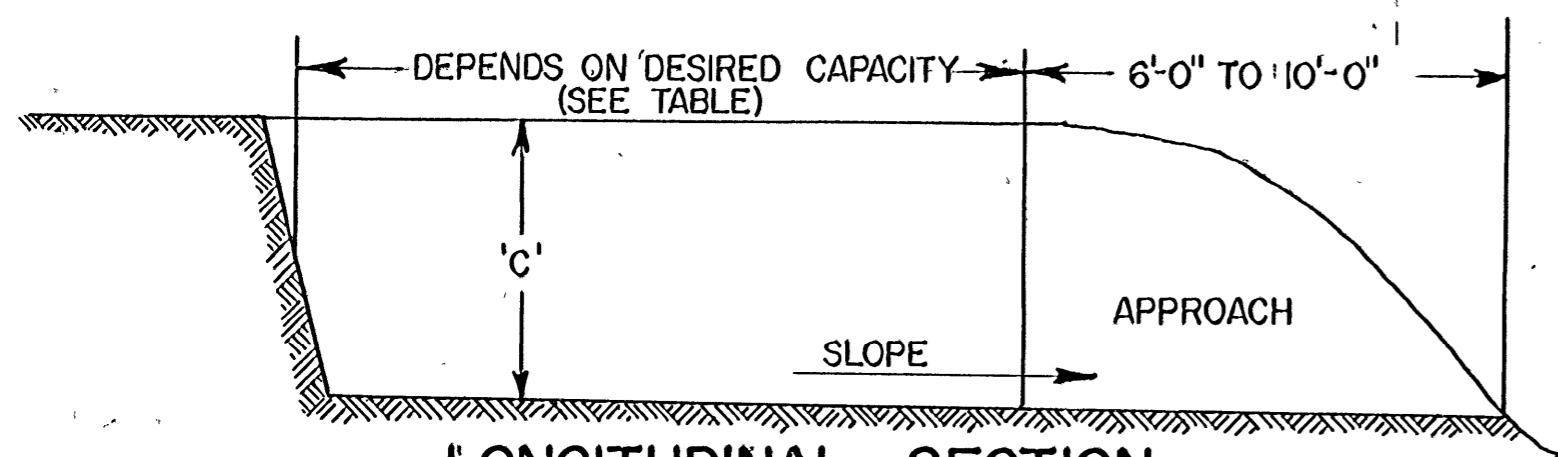
CROSS-SECTION TEMPORARY TYPE

SCALE: 1/2" = 1'-0"



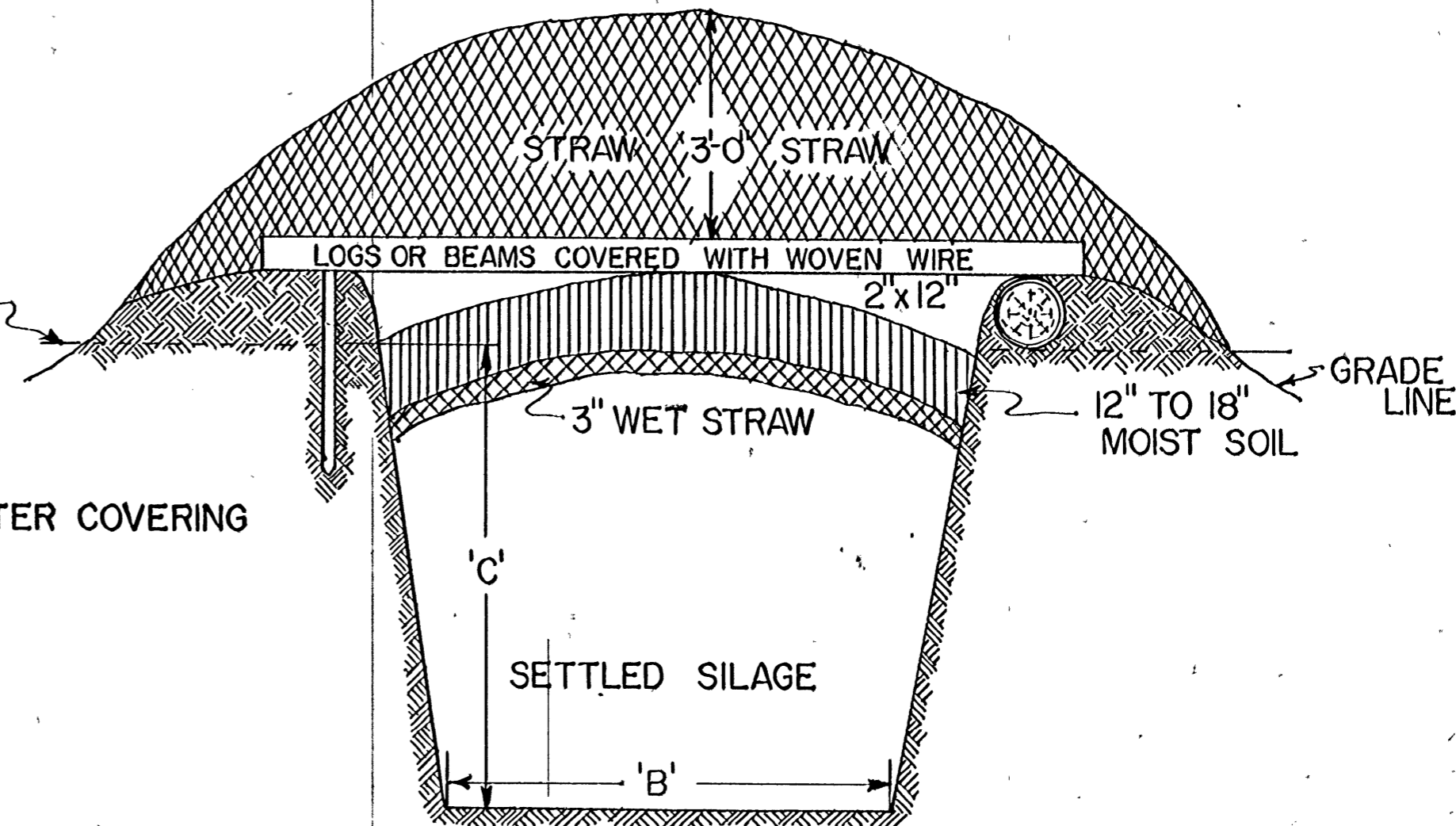
CROSS-SECTION PERMANENT TYPE

SCALE: 1/2" = 1'-0"



LONGITUDINAL SECTION

SCALE: 1/8" = 1'-0"



SAME SILO AFTER COVERING

**BILL OF MATERIALS**  
 PERMANENT TYPE - 16 COW CAPACITY  
 CONCRETE - 1: 2 1/2: 4 MIX

FOR ENDS:  
 CEMENT: 10 BAGS; SAND: 1 CU. YD. STONE: 16 CU. YD.  
 SILLS: 2 PCS. 2x4x10'-0"  
 RAFTERS: 2 PCS. 2x4x12'-0"  
 BRACES: 2 PCS. 2x4x8'-0"  
 SHIPLAP: 40 BD. FT.  
 ROOFING: 30 SQ. FT.  
 REINFORCING RODS: 100 LIN. FT. 3/8" DIA.

EACH 6'-0" CENTER SPAN  
 CEMENT: 9 BAGS; SAND: 9 CU. YD. STONE: 13 CU. YDS.  
 SILLS: 1 PCS. 2x6x12'-0"  
 RAFTERS: 2 PCS. 2x4x12'-0"  
 BRACES: 2 PCS. 2x4x8'-0"  
 GIRTS: 5 PCS. 2x4x12'-0"  
 SHIPLAP: 90 BD. FT.  
 ROOFING: 80 SQ. FT.  
 REINFORCING RODS: 120 LIN. FT. 3/8" DIA.  
 ANCHOR BOLTS

NUMBER OF COWS	WIDTH		DEPTH C	CAPACITY		LENGTH FEET
	A	B		POUNDS	TONS	
6	6'-0"	4'-0"	5'-0"	32,400	16.2	39
8	6'-0"	4'-0"	5'-0"	43,200	21.6	52
10	7'-0"	5'-0"	5'-0"	54,000	27.0	63
12	7'-0"	5'-0"	5'-0"	64,800	32.4	63
14	7'-0"	5'-0"	6'-0"	75,600	37.8	62
16	8'-0"	6'-0"	6'-0"	86,400	43.2	62
18	8'-0"	6'-0"	7'-0"	97,200	48.6	61
20	9'-0"	7'-0"	7'-0"	108,000	54.0	56
24	10'-0"	8'-0"	7'-0"	129,600	64.8	60

ALLOWANCE OF 30 LB. OF SILAGE PER COW A DAY

COOPERATIVE EXTENSION WORK IN  
 AGRICULTURE AND HOME ECONOMICS  
 STATE OF MISSISSIPPI  
 MISSISSIPPI STATE UNIVERSITY  
 AND  
 UNITED STATES DEPARTMENT OF AGRICULTURE COOPERATING

**TRENCH SILO**