

SIDING IS NAILED TO 1"X6" DIAG. BRACES WITH 2-4d. NAILS IN EACH BOARD. BRACES ARE NOTCHED INTO STUDS & SILL.

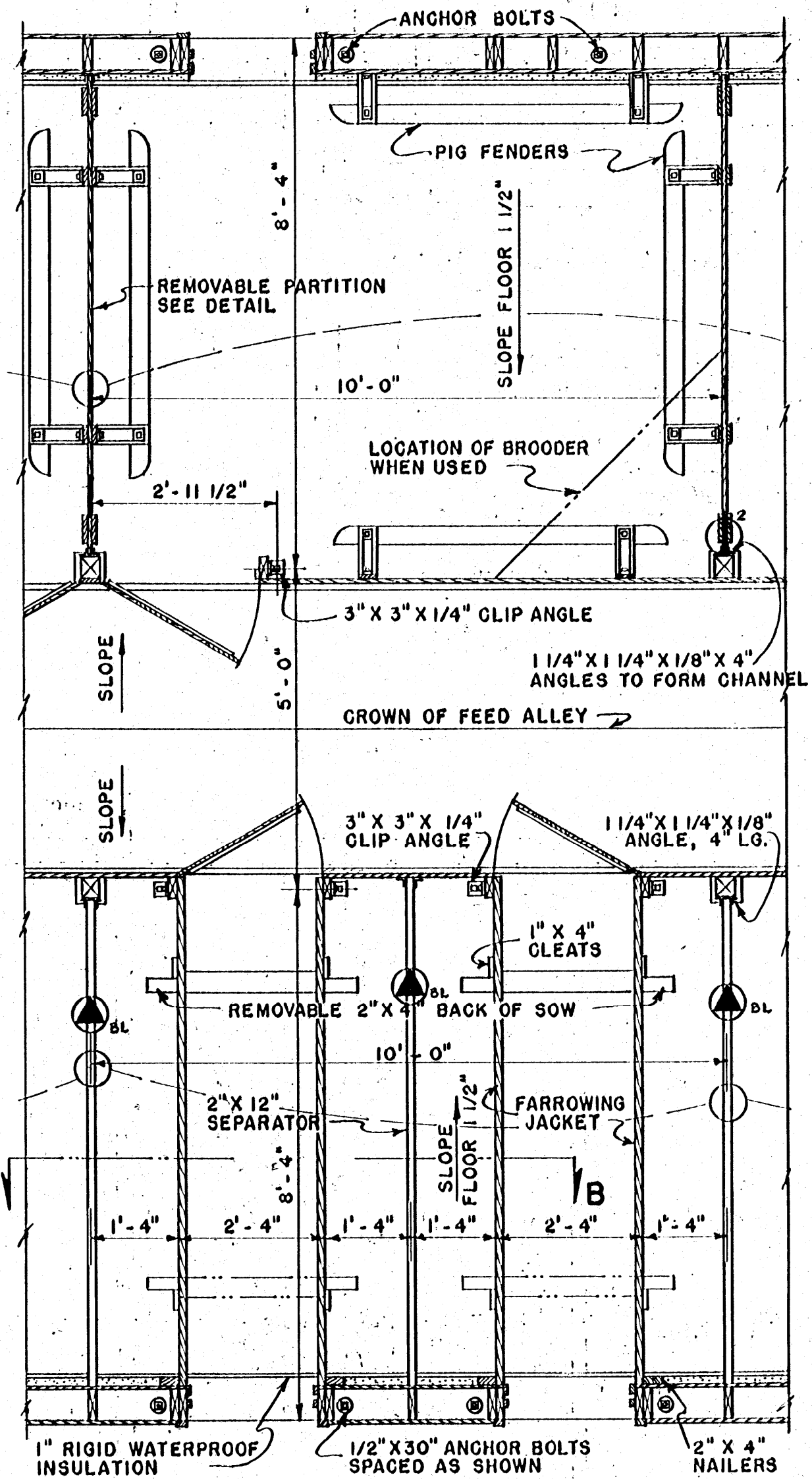
NOTE: RATPROOF FEED ROOM BY COVERING LOWER 12" OF DOORS WITH 26 GA. GALVANIZED SHEET STEEL.

- WIRING LEGEND**
- LIGHT OUTLET
 - BROODER LAMP OUTLET
 - ⊕ DUPLEX OUTLET
 - WALL LIGHT OUTLET
 - OUTDOOR FLOOD LIGHTS
 - S SWITCH
 - S₃ 3 WAY SWITCH
- NORTH

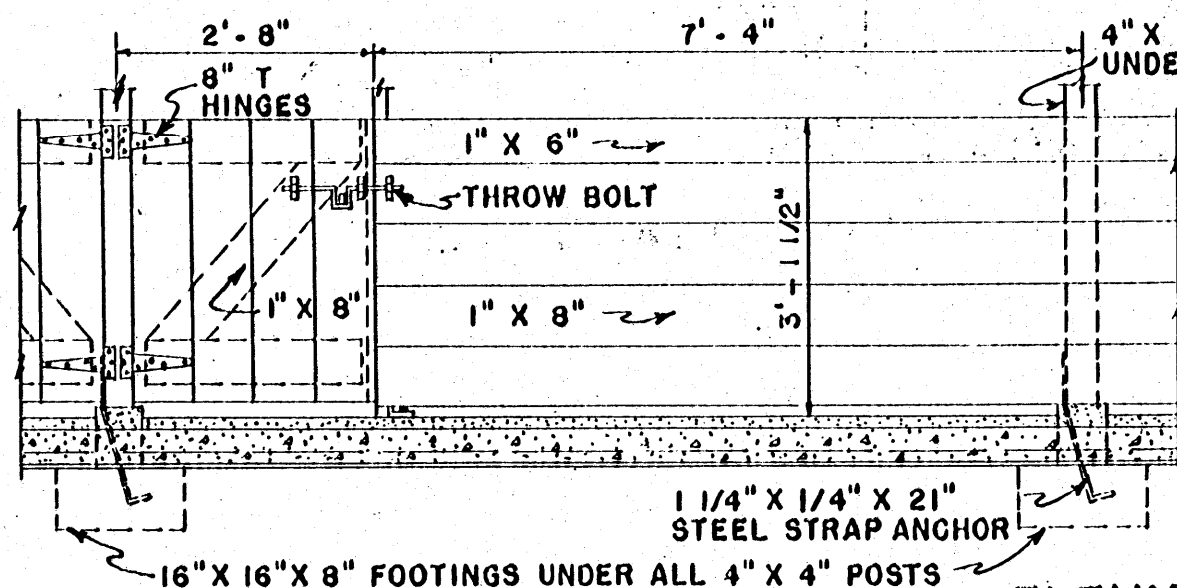
COOPERATIVE EXTENSION WORK IN
AGRICULTURE AND HOME ECONOMICS
STATE OF MISSISSIPPI
MISSISSIPPI STATE UNIVERSITY
AND
UNITED STATES DEPARTMENT OF AGRICULTURE COOPERATING

CENTRAL FARROWING HOUSE

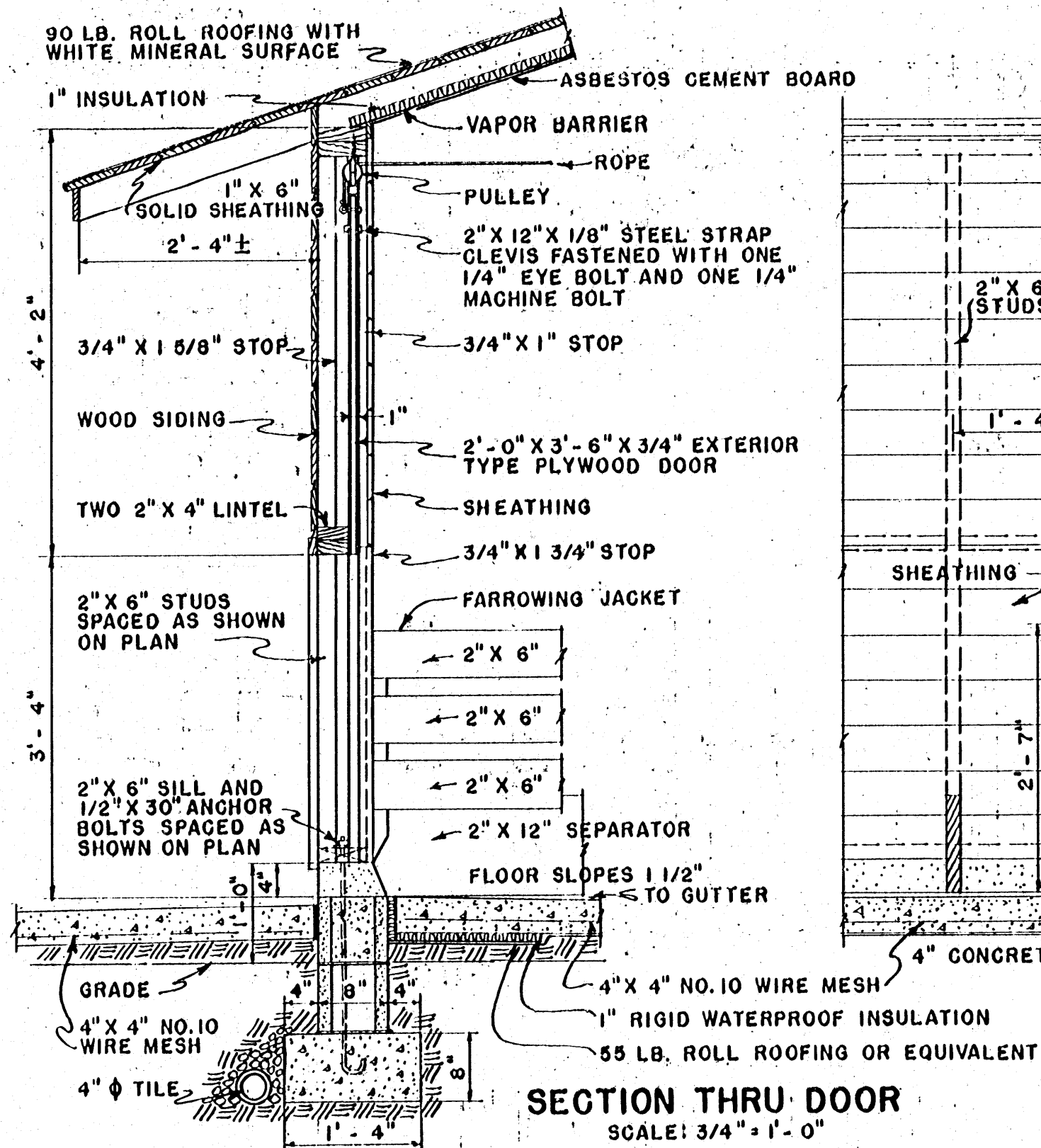
USDA '36 EX. 5823 SHEET 1 OF 2



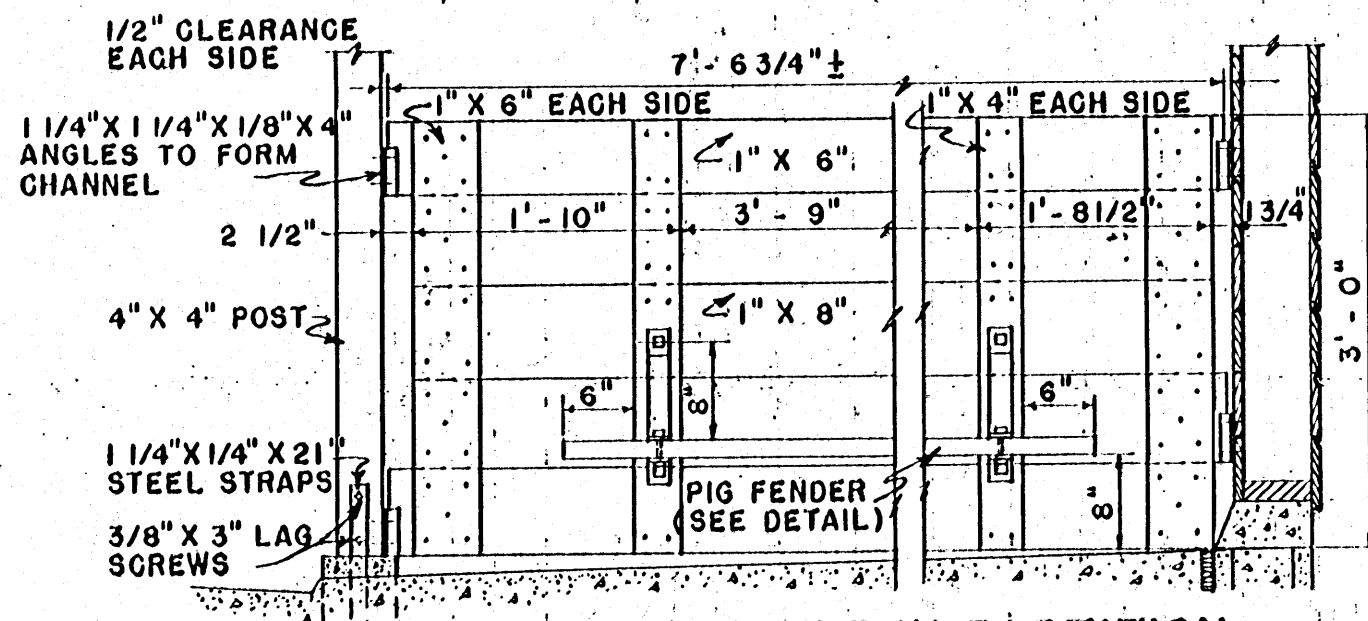
PARTIAL PLAN OF PEN AND STALLS
SCALE: 1/2" = 1'-0"



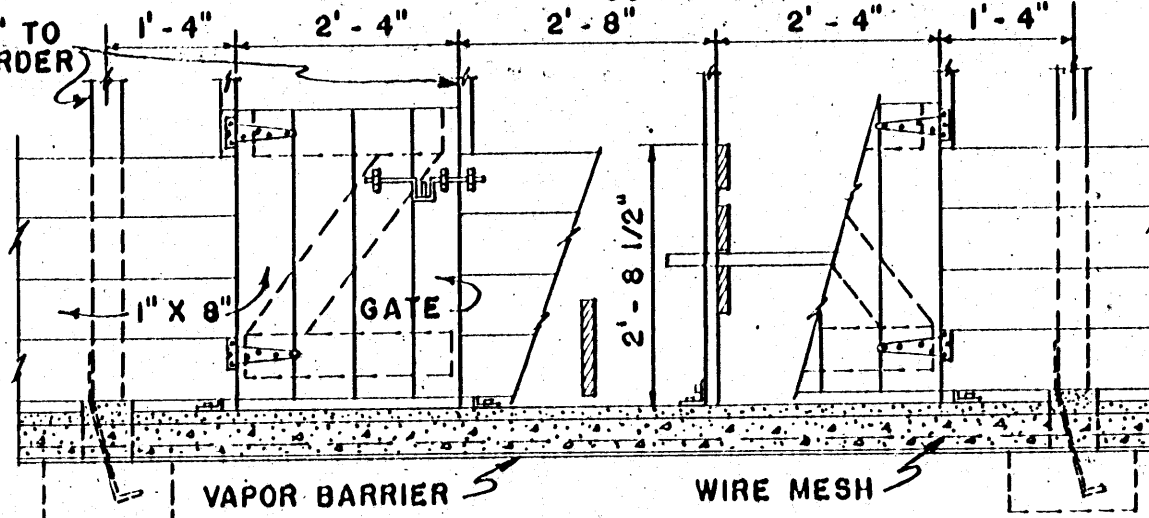
ELEVATION OF PEN & STALL FRONTS
(PARTIAL CUT AWAY ON STALL FRONT)
SCALE: 1/2" = 1'-0"



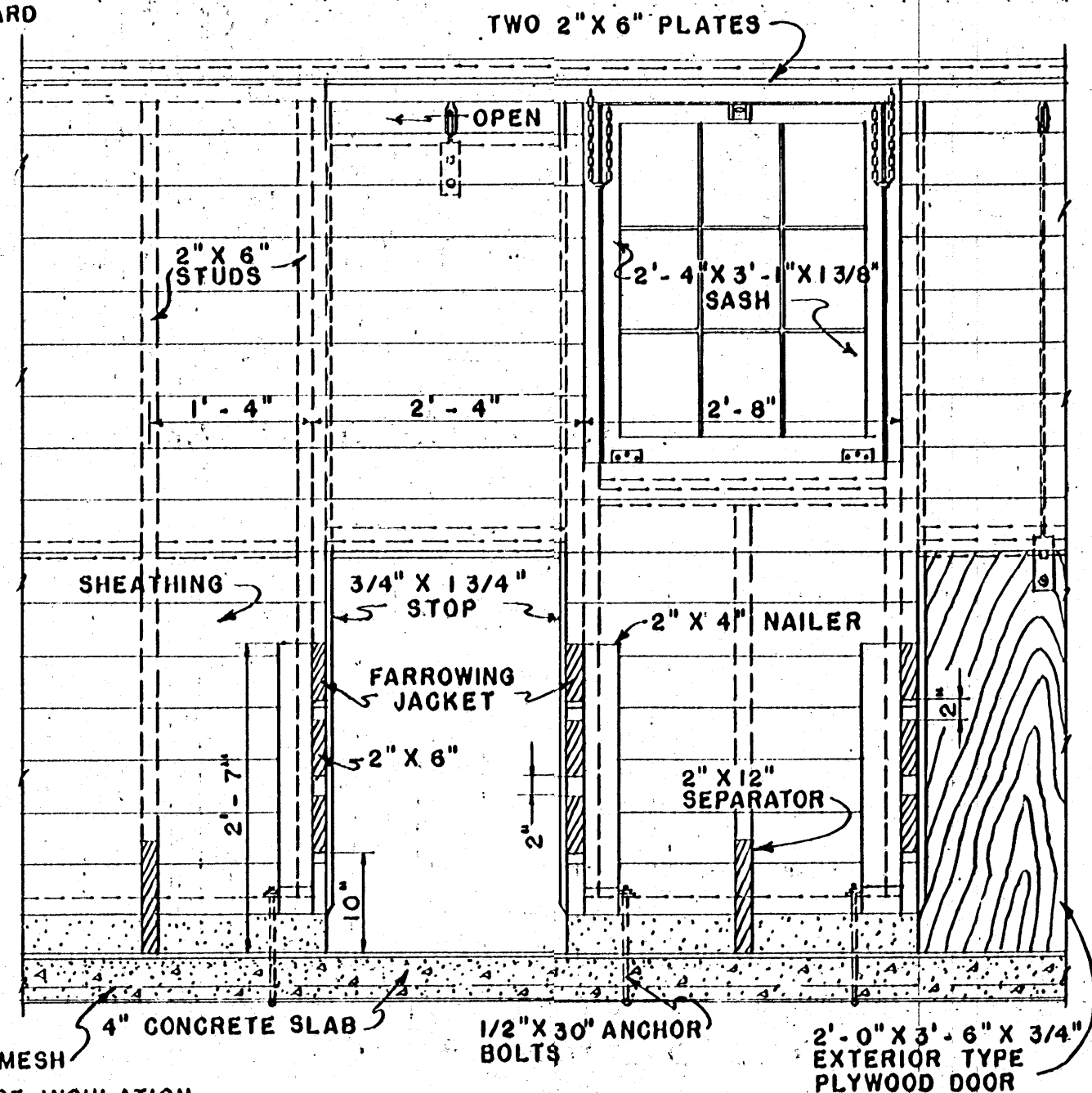
SECTION THRU DOOR
SCALE: 3/4" = 1'-0"



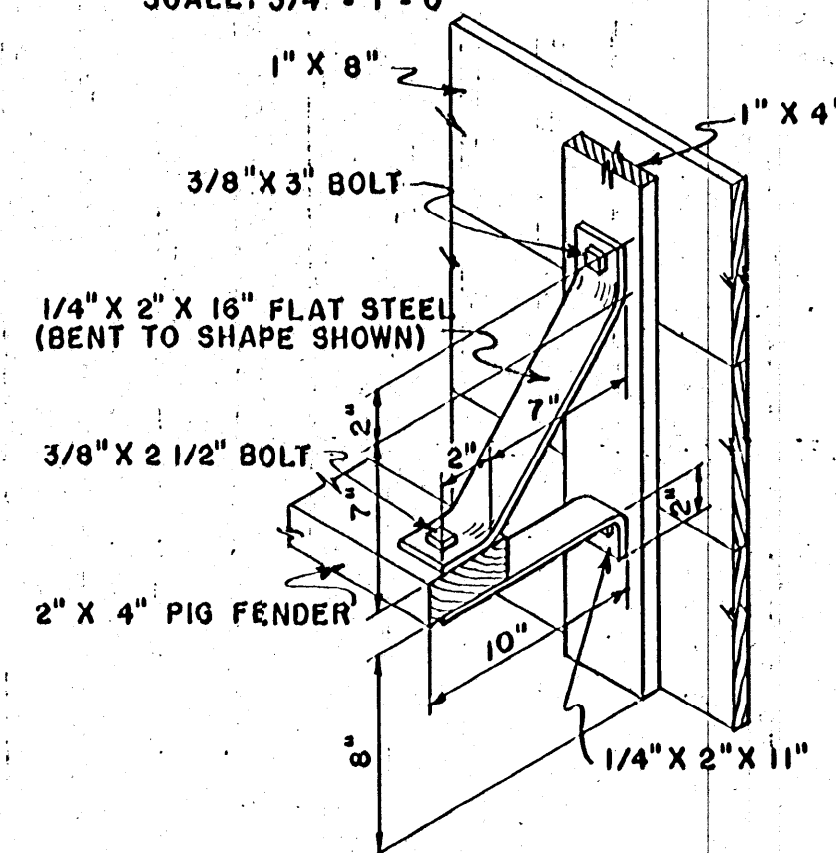
ELEVATION OF PEN PARTITION
(PARTITIONS MAY BE REMOVED BY LIFTING ENOUGH TO
CLEAR CHANNELS)
SCALE: 3/4" = 1'-0"



NOTE:
FILL ALL CORES
AROUND ANCHOR
BOLTS WITH
CONCRETE



SECTION THRU FARROWING STALLS AT B-B
SCALE: 3/4" = 1'-0"



FENDER DETAIL
SCALE: 1 1/2" = 1'-0"

COOPERATIVE EXTENSION WORK IN
AGRICULTURE AND HOME ECONOMICS
STATE OF MISSISSIPPI
MISSISSIPPI STATE UNIVERSITY
AND
UNITED STATES DEPARTMENT OF AGRICULTURE COOPERATING

CENTRAL FARROWING HOUSE