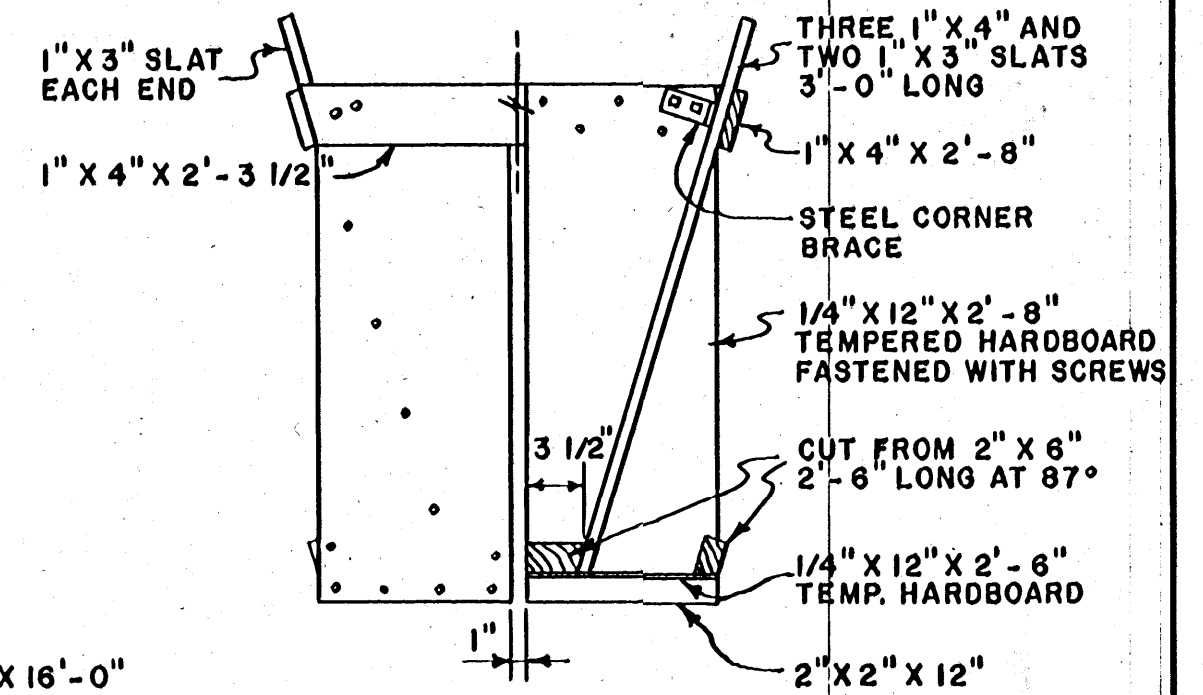
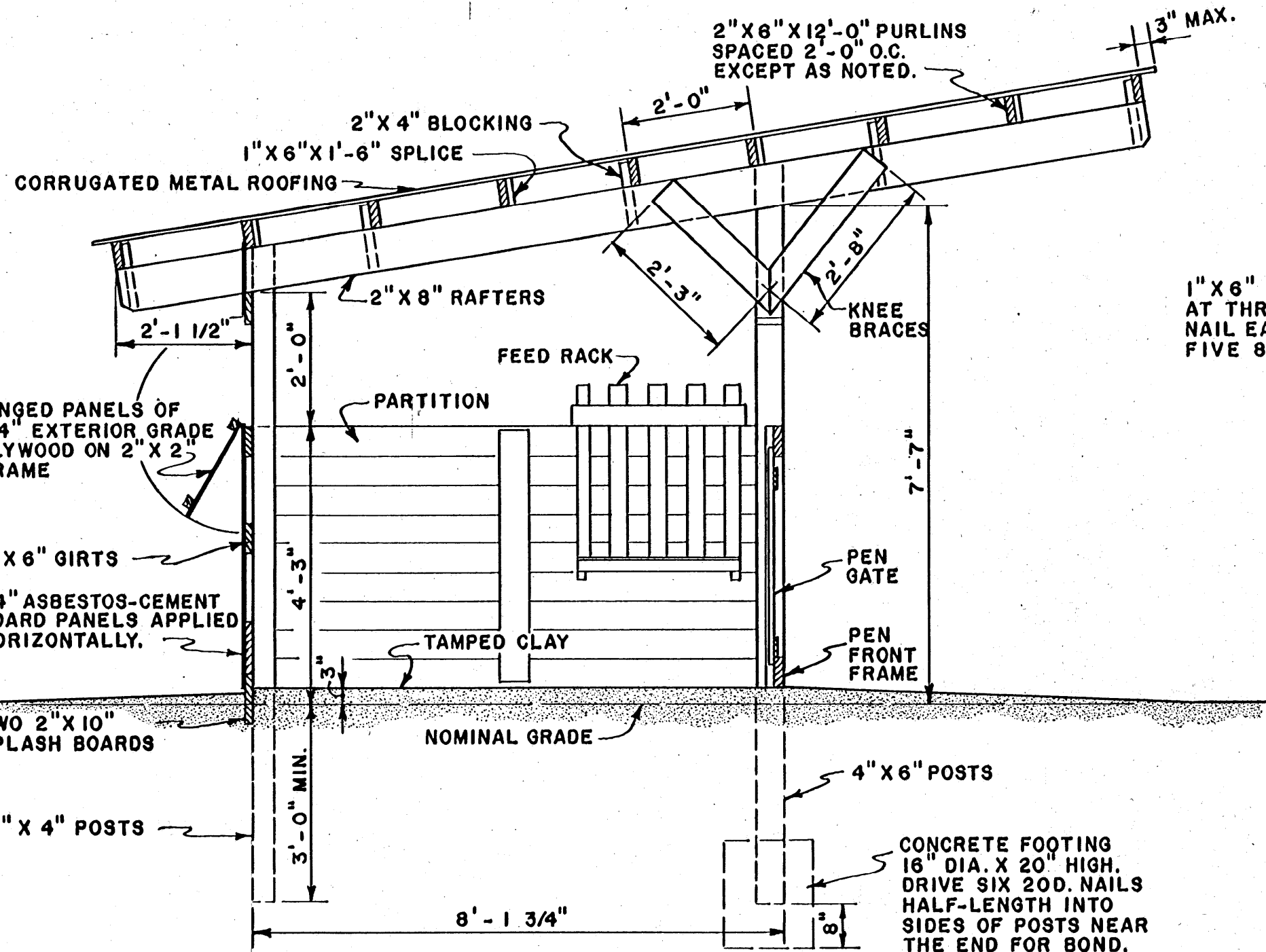


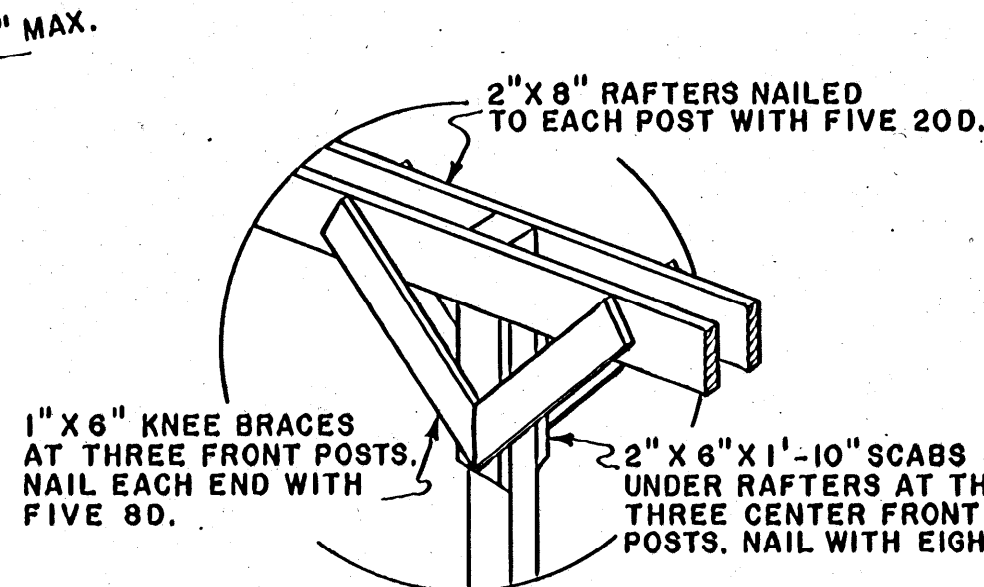
PLAN
CUT AWAY TO SHOW CONSTRUCTION
SCALE: 1/4" = 1' - 0"



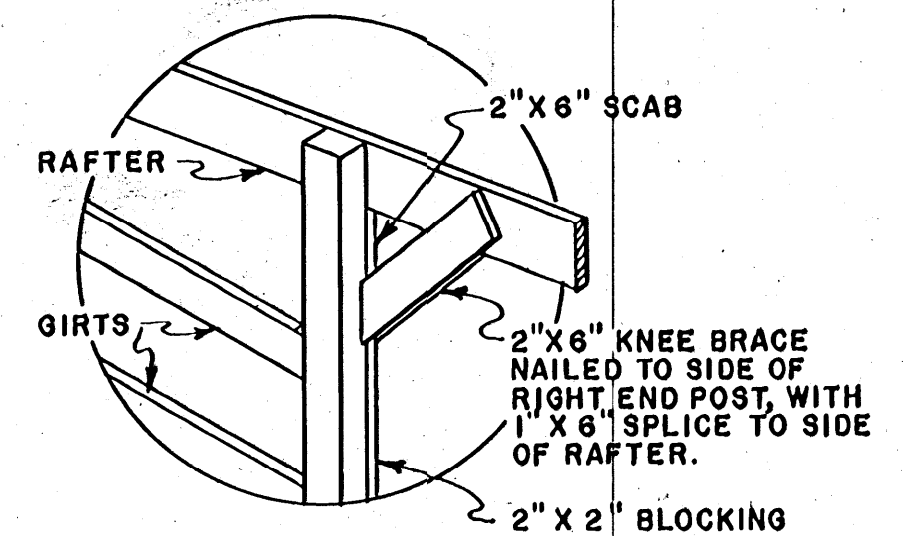
END VIEW
(CUT AWAY)
FEED RACK
(FIVE REQD)
SCALE: 1" = 1' - 0"



SECTION A-A
SCALE: 1/2" = 1' - 0"



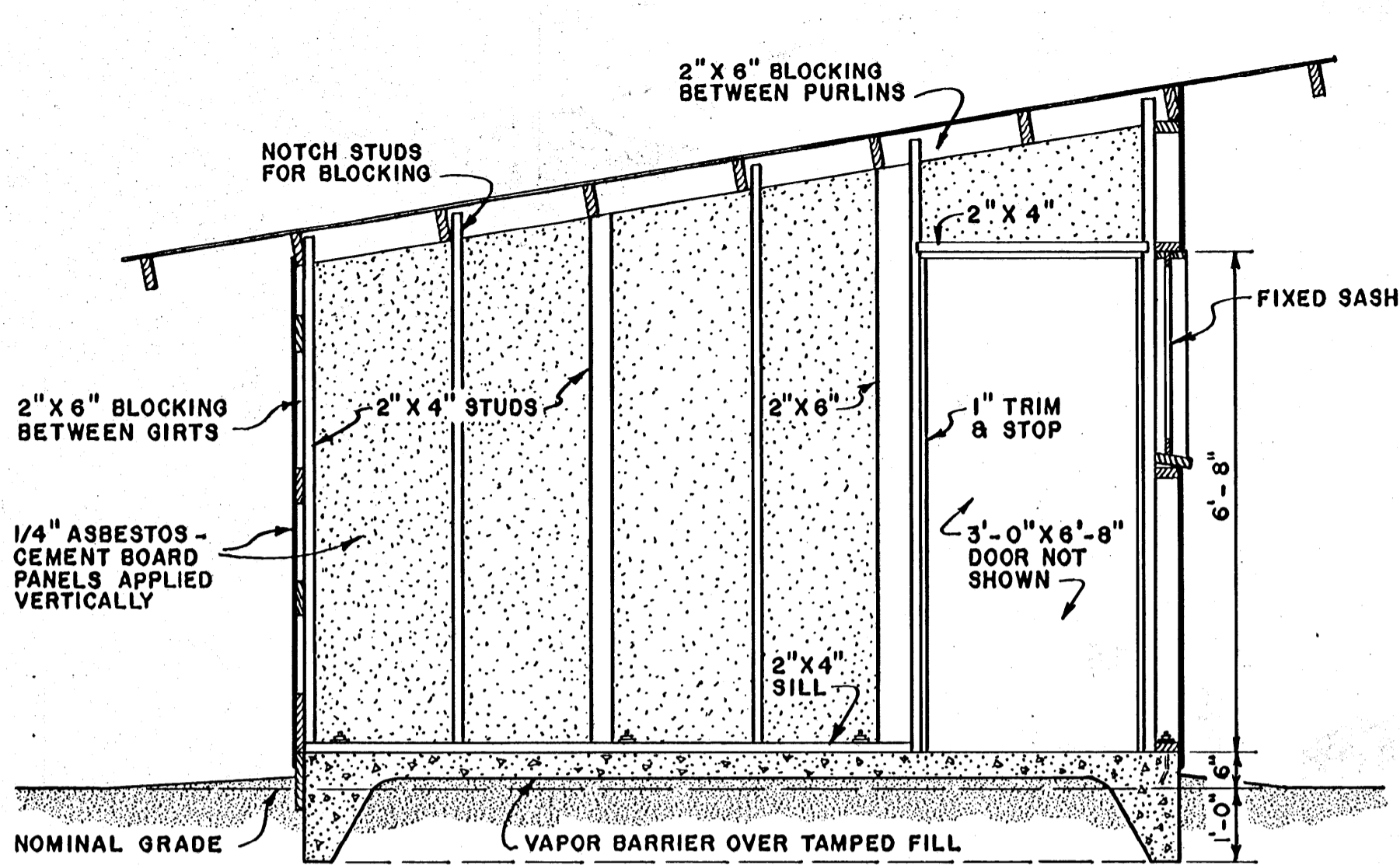
KNEE BRACES
NO SCALE



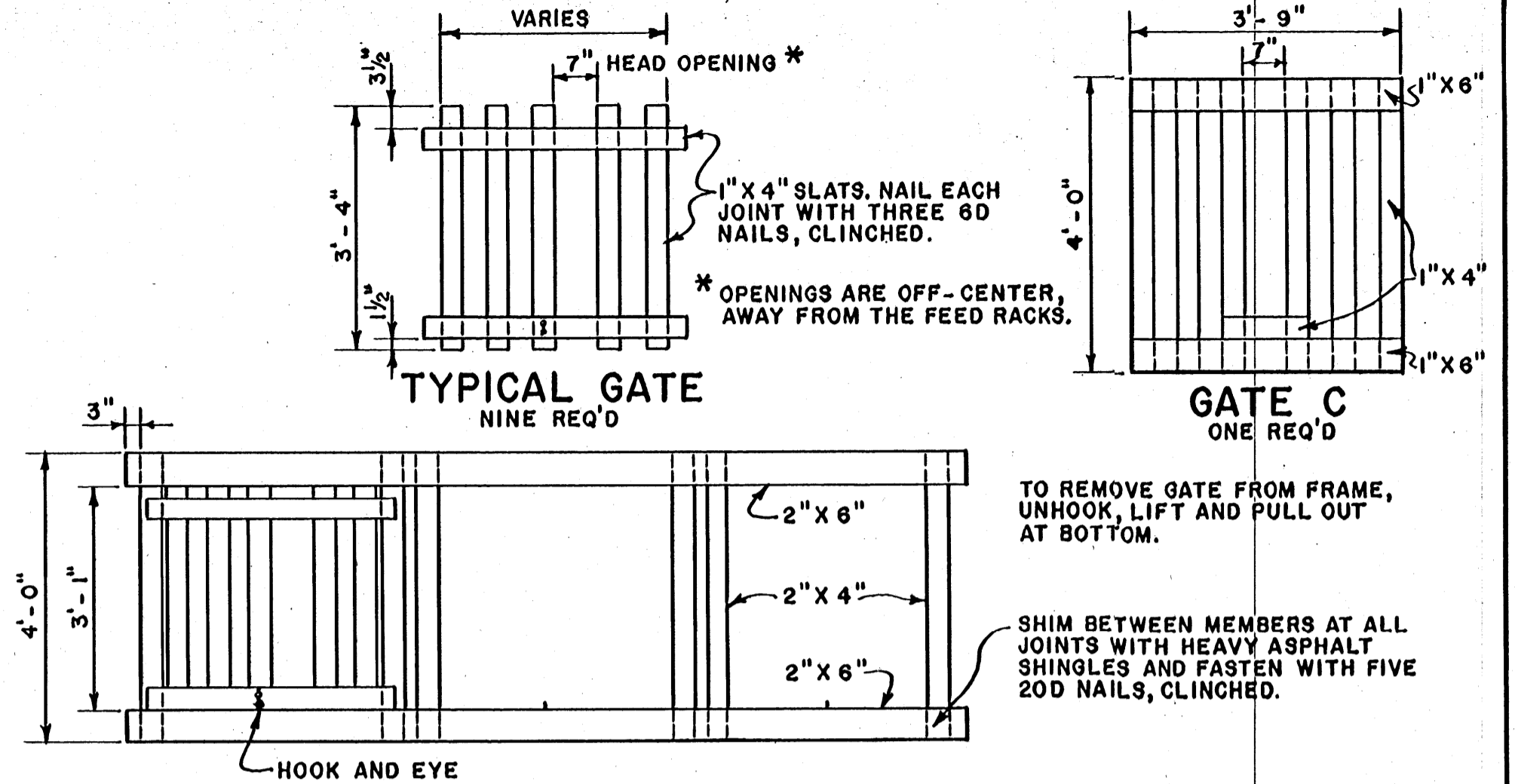
ALL POSTS AND OTHER WOOD IN CONTACT WITH EARTH, CONCRETE OR MANURE TO BE PRESSURE-TREATED WITH PRESERVATIVE TO 8LBS. PER CUBIC FOOT RETENTION. THE CONCRETE FEED ROOM FLOOR IS CAST AFTER THE POSTS ARE SET AND RAFTERS, PURLINS AND LOWER 2" X 10" SPLASH BOARD ARE IN PLACE. THE HINGED PANELS FOR SUMMER VENTILATION ARE CONTINUOUS IN NORTH WALL BEHIND PENS. PROVIDE LATCHES OR TURNBUTTONS TO SECURE PEN FRONT FRAMES AND GATE C TO THE POSTS. THIS STRUCTURE IS DESIGNED FOR USE IN LOCALITIES WHERE THE SNOW LOAD DOES NOT EXCEED 25 POUNDS PER SQUARE FOOT. ALL ELECTRICAL OUTLETS AND FIXTURES ARE WEATHER-PROOF GROUNDED TYPE. CIRCUIT WIRING IS NON-METALLIC SHEATHED CABLE WITH GROUND WIRE.

BASED ON NORTH CAROLINA PLAN NO. 236.

COOPERATIVE EXTENSION WORK IN AGRICULTURE AND HOME ECONOMICS		
STATE OF MISSISSIPPI		
MISSISSIPPI STATE UNIVERSITY		
AND UNITED STATES DEPARTMENT OF AGRICULTURE COOPERATING		
CALF BARN		
OPEN FRONT * PEN TYPE		
USDA '64	EX. 5970	SHEET 1 OF 2

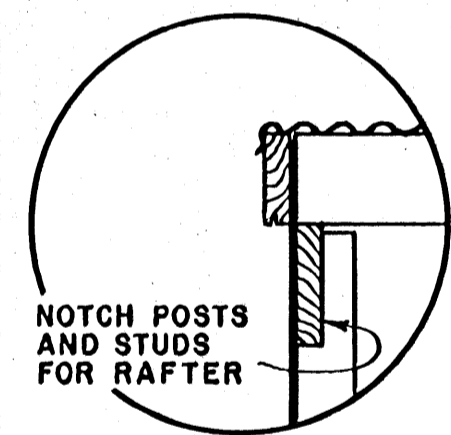


SECTION B-B

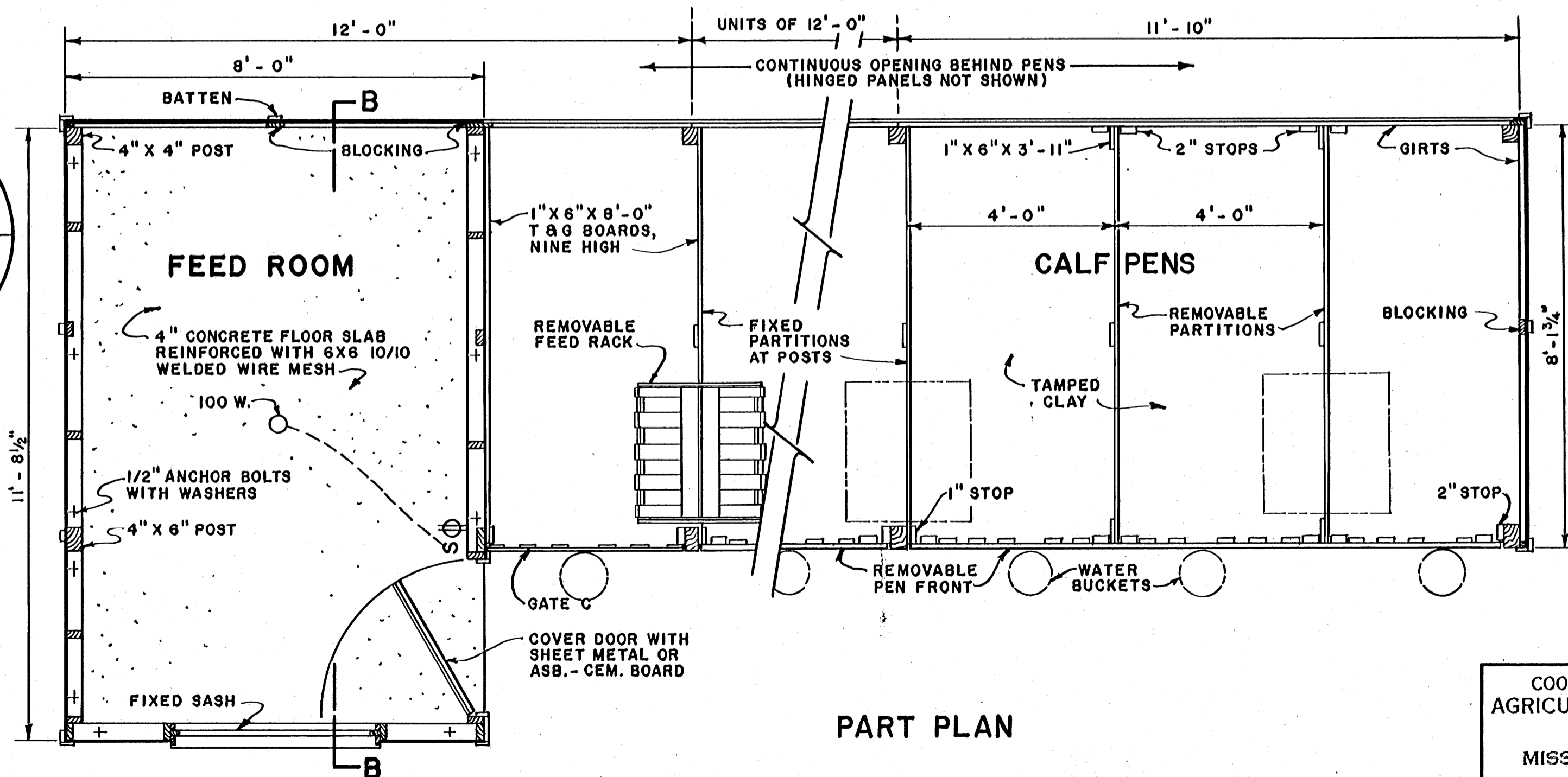


PEN FRONT FRAME WITH ONE GATE IN PLACE

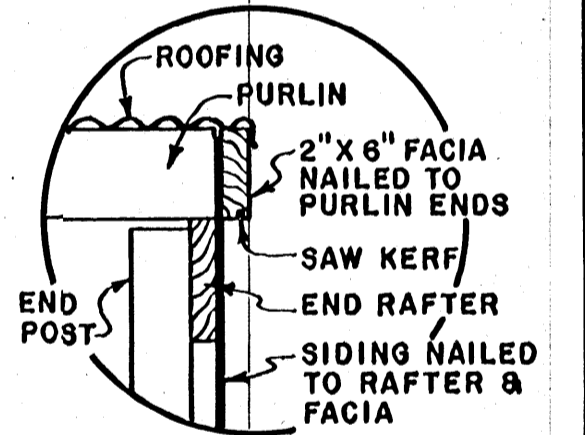
PEN FRONT DETAILS



LEFT END WALL DETAIL
SCALE: 1" = 1'-0"



PART PLAN



RIGHT END WALL DETAIL
SCALE: 1" = 1'-0"

FEED ROOM ARRANGEMENT AND EQUIPMENT SHALL BE DETERMINED BY THE OPERATOR, BUT INSTALLATION OF A FRESH WATER LINE AND A TRAPPED DRAIN LEADING TO A GRAVEL-FILLED DRY WELL ARE RECOMMENDED.

PROVIDE 2" BLOCKING BEHIND ALL JOINTS IN THE SIDING AND APPLY A BEAD OF CALKING COMPOUND UNDER THE JOINT.

SCALE: 1/2" = 1'-0" EXCEPT AS NOTED

COOPERATIVE EXTENSION WORK IN
AGRICULTURE AND HOME ECONOMICS
STATE OF MISSISSIPPI
MISSISSIPPI STATE UNIVERSITY
AND
UNITED STATES DEPARTMENT OF AGRICULTURE COOPERATING

CALF BARN
OPEN FRONT * PEN TYPE
USDA '64 EX. 5970 SHEET 2 OF 2