

**NOTES:**

LENGTH OF BUILDING MAY BE VARIED IN UNITS OF 16 FEET.

ALL POSTS AND WOOD IN CONTACT WITH THE GROUND TO BE PRESSURE-TREATED WITH PRESERVATIVE TO A RETENTION OF 6 LBS. PER CU. FT.

FRAMING AROUND FAN SHOULD BE CUT TO FIT SIZE OF FAN USED.

THE NESTS ARE BUILT IN SECTIONS SO THEY CAN BE REMOVED AND THOROUGHLY CLEANED BETWEEN FLOCKS.

EQUIP WITH AN ADEQUATE LIGHTNING PROTECTION SYSTEM WHERE NEEDED.

**PANEL CONSTRUCTION-**  
2" x 4" FRAME COVERED ON BOTH SIDES WITH 3/8" EXTERIOR PLYWOOD. INSIDE OF PANEL TO HAVE A 4 TO 6 MIL POLYETHYLENE VAPOR BARRIER NEXT TO THE INSULATION.

**VENTILATION REQUIREMENTS-**

**FOR WINTER OPERATION-**  
TURN BOTH SINGLE POLE SWITCHES "ON" SET NO. 1 THERMOSTAT AT 50°-55° AND NO. 2 THERMOSTAT AT 40°-45°. ADJUST RECYCLING TIMER TO OPERATE FANS ABOUT 1/5 OF TIME WHEN NO. 1 THERMOSTAT IS OFF.

**FOR SUMMER OPERATION**  
TURN NO. 2 SINGLE POLE SWITCH TO "OFF" POSITION TO STOP MOTOR IN TIMER. SET NO. 1 THERMOSTAT AT ABOUT 80°.

USE A SET OF THE CONTROLS (SEE DIAGRAM BELOW) FOR EACH PAIR OF FANS.

FAN CAPACITY, 4.5 CFM PER BIRD.

**WIRING DIAGRAM FOR FANS SHOWN BELOW.**

**WIRING REQUIREMENTS-**

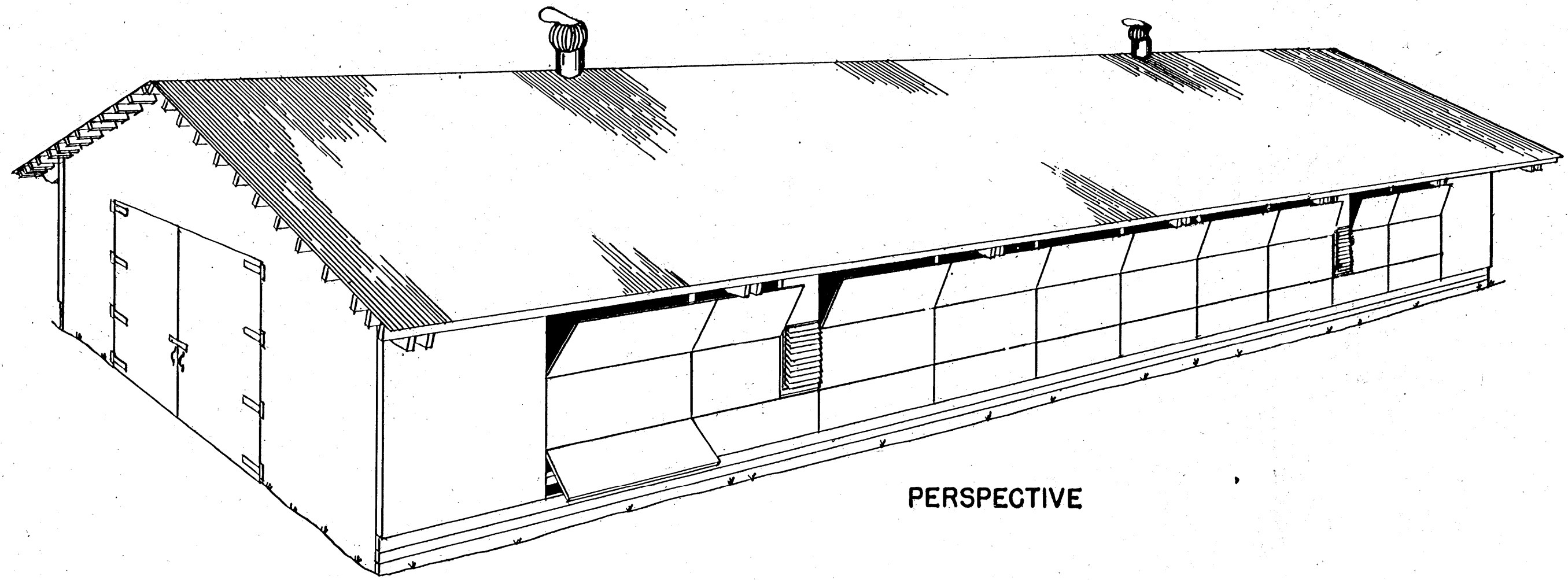
100 FT. CIRCUIT WITH 60 W. LAMP EACH 16 FT. - 360 W. - NO. 12 WIRE.

150 FT. CIRCUIT WITH 60 W. LAMP EACH 16 FT. - 540 W. - NO. 12 WIRE.

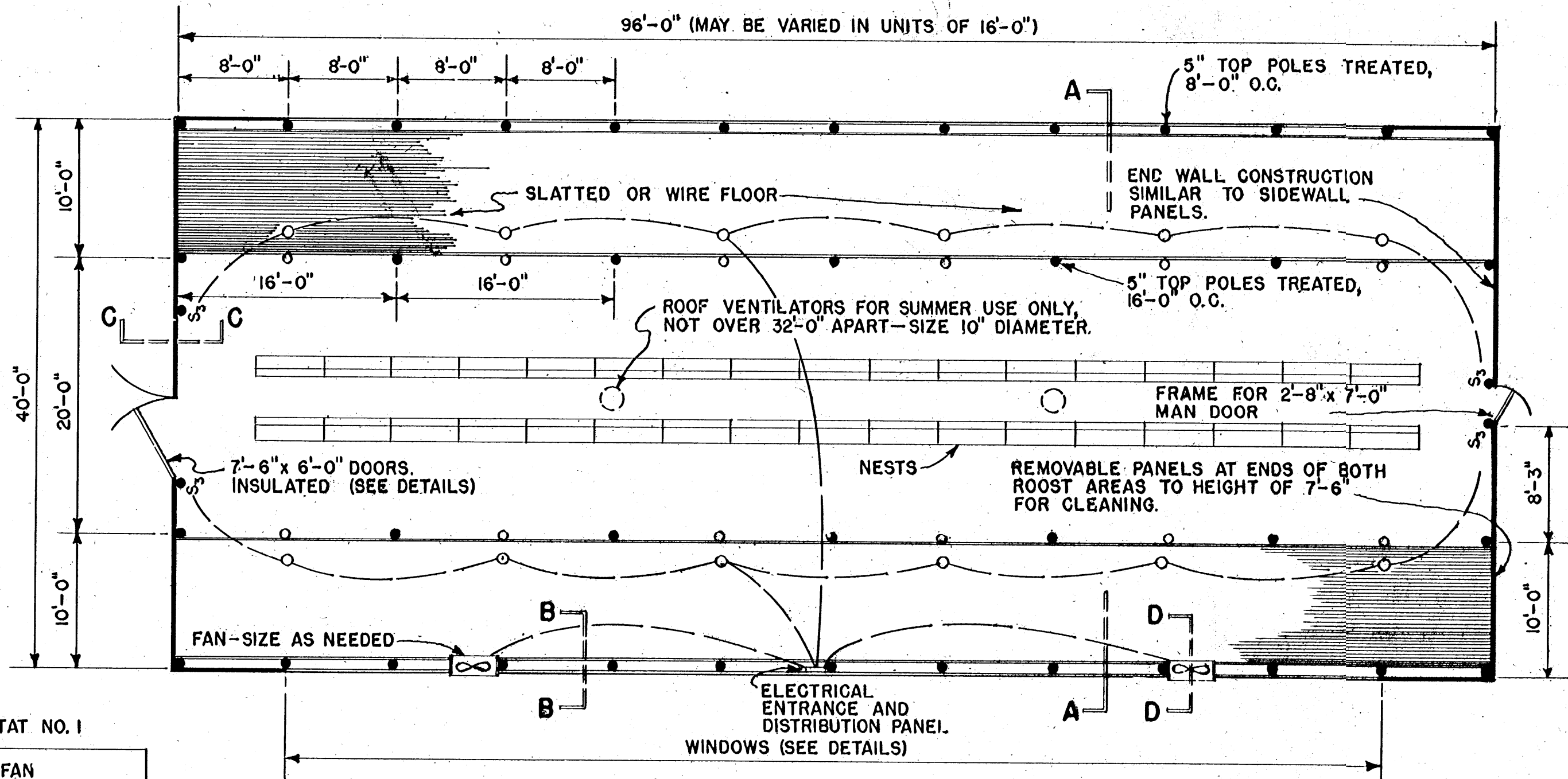
200 FT. CIRCUIT WITH 60 W. LAMP EACH 16 FT. - 750 W. - NO. 10 WIRE.

FOR CIRCUITS OVER 200 FT. CONSULT ENGINEER OR POWER SUPPLIER.

LOCATE ENTRANCE EQUIPMENT AND DISTRIBUTION PANEL AT MIDDLE OF THE BUILDING WHEN LENGTH EXCEEDS 200 FT.



PERSPECTIVE

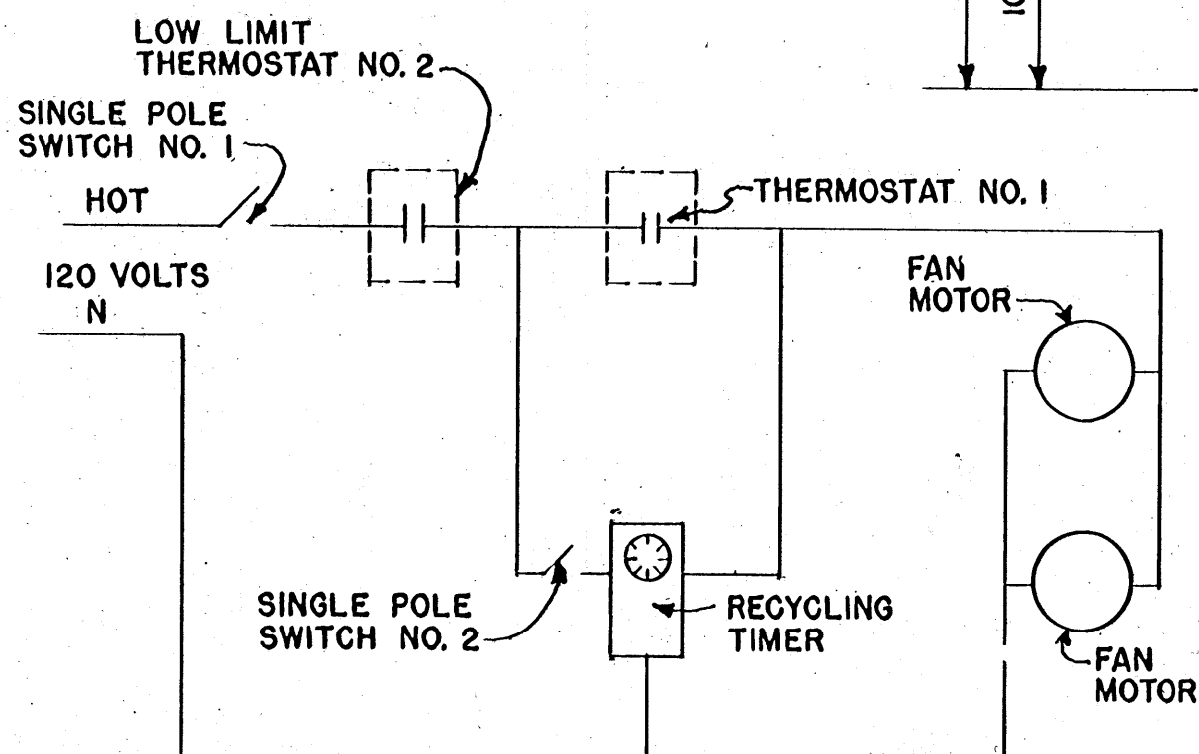


**PLAN**

SCALE = 1/8" = 1'-0"

**LEGEND:**

- S<sub>3</sub> - THREE-WAY SWITCH
- - 60 WATT LAMP WITH REFLECTOR
- - ROOF VENTILATORS - SUMMER USE ONLY



**WIRING DIAGRAM FOR CONTROLLING FANS.**

COOPERATIVE EXTENSION WORK IN AGRICULTURE AND HOME ECONOMICS

STATE OF MISSISSIPPI

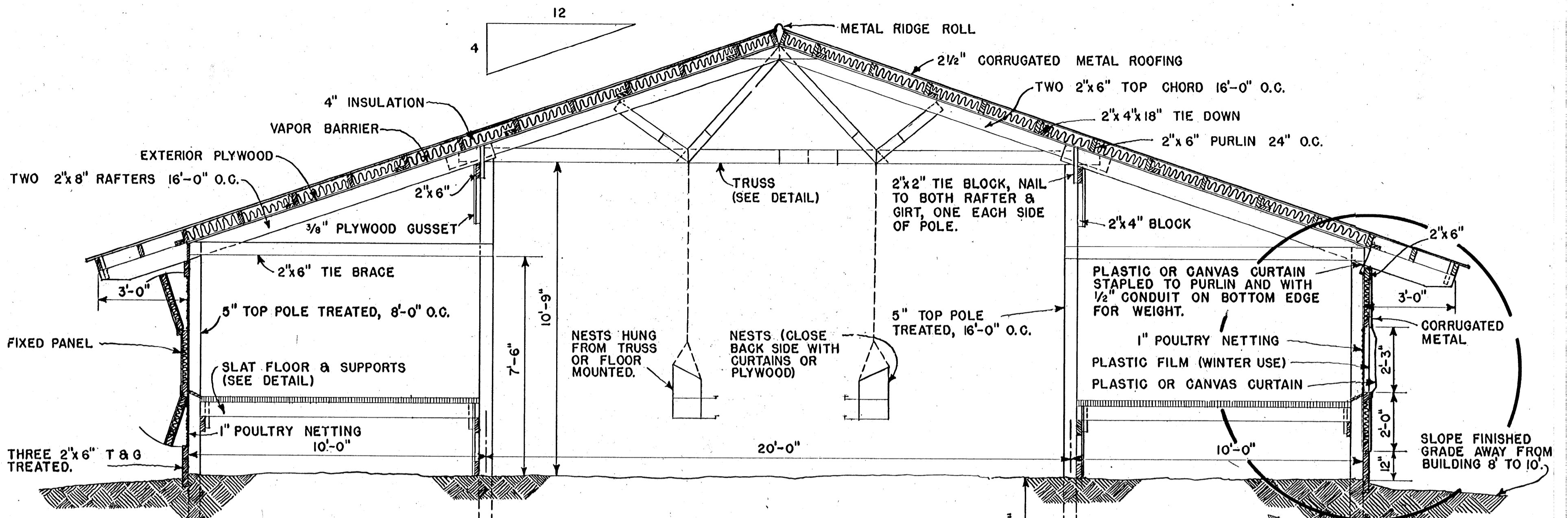
MISSISSIPPI STATE UNIVERSITY

UNITED STATES DEPARTMENT OF AGRICULTURE COOPERATING

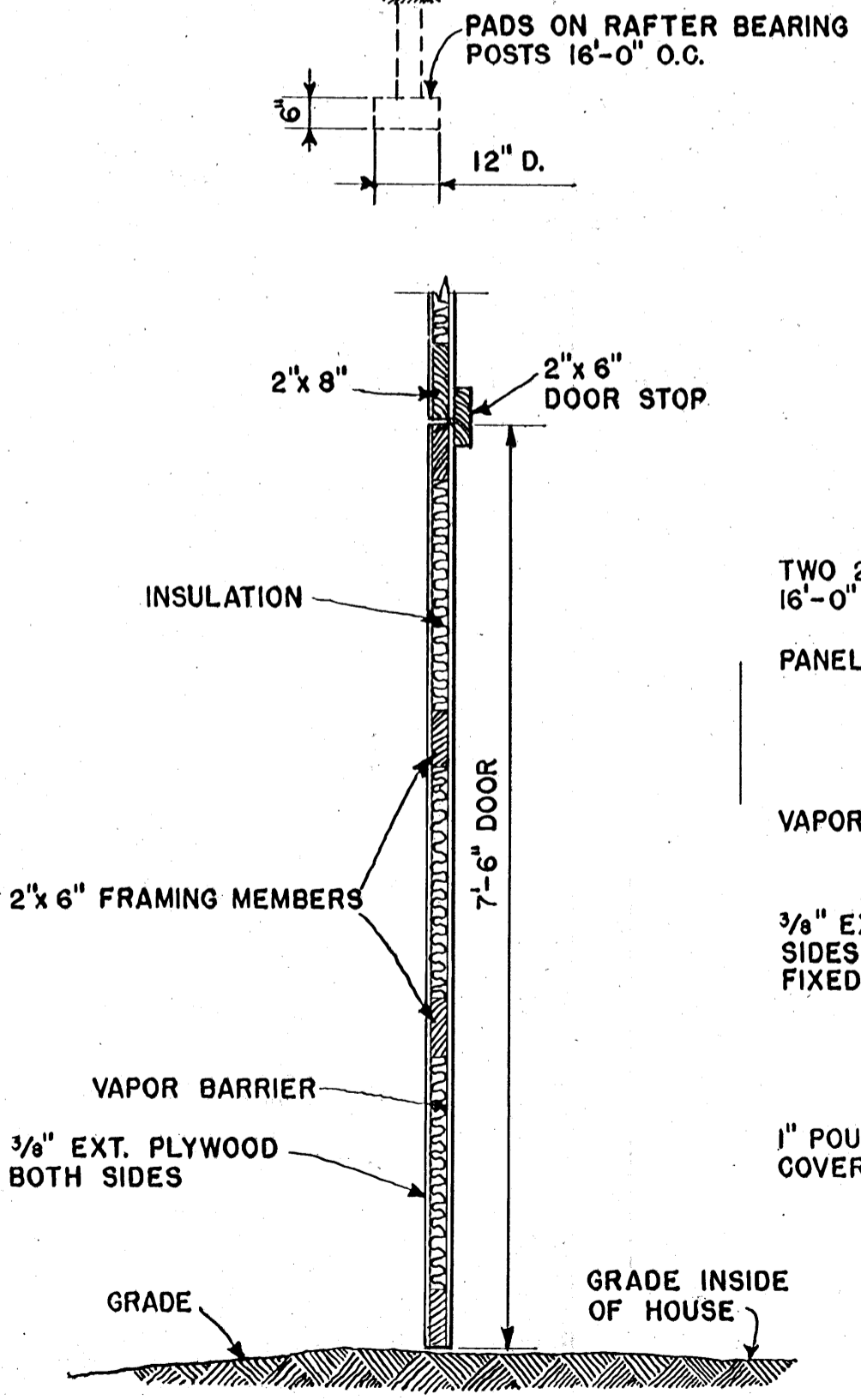
---

**LAYING HOUSE**

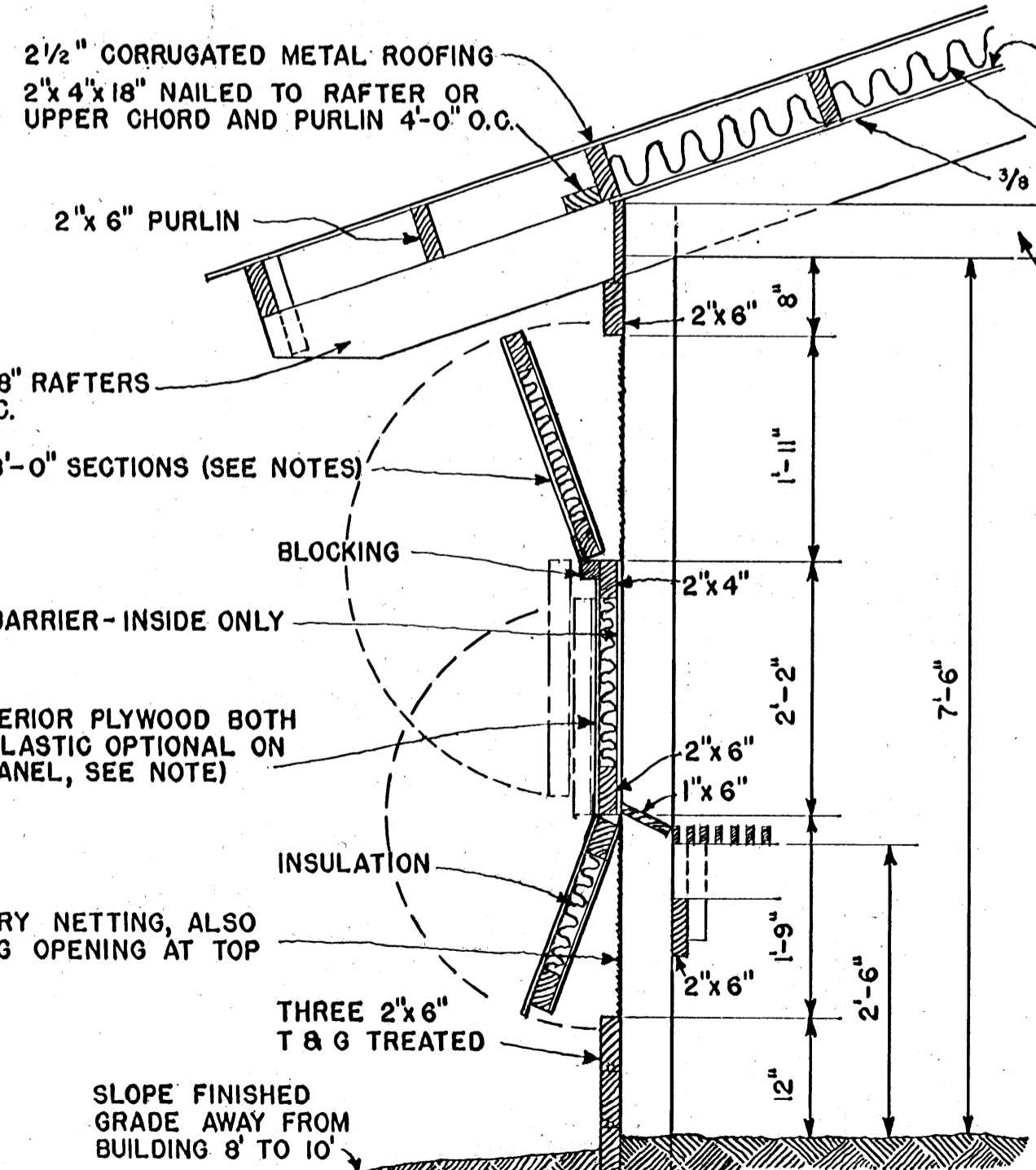
USDA '65	EX. 5990	SHEET 1 OF 4
----------	----------	--------------



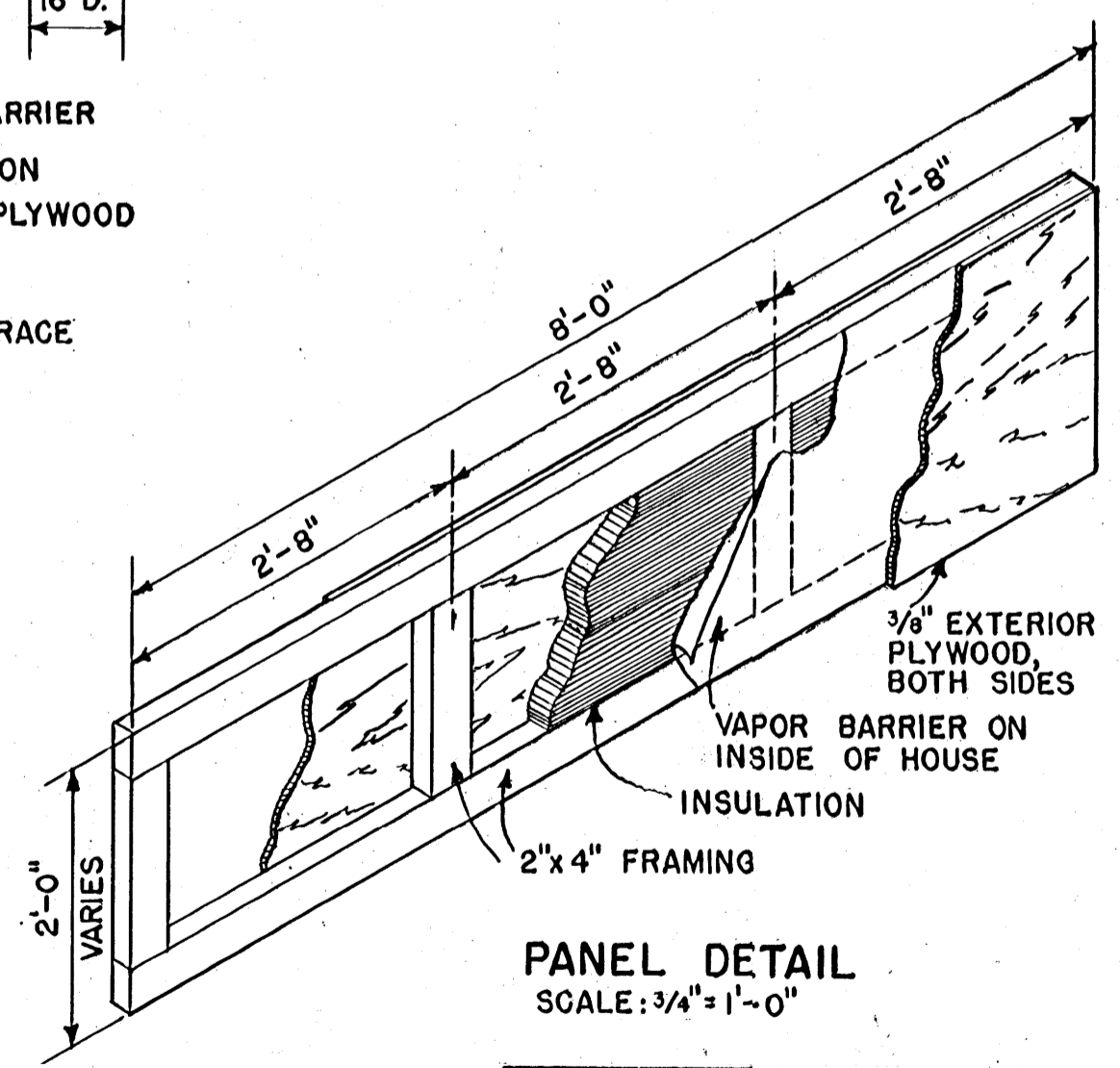
**SECTION A-A**  
SCALE: 3/8" = 1'-0"



**SECTION C-C**  
SCALE: 3/4" = 1'-0"



**SECTION B-B**  
SCALE: 3/4" = 1'-0"



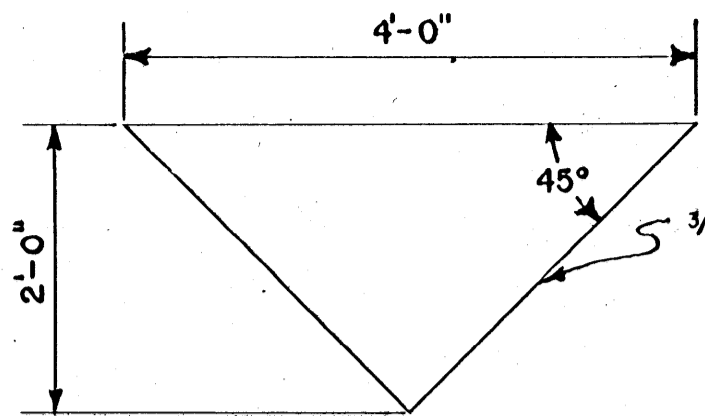
**PANEL DETAIL**  
SCALE: 3/4" = 1'-0"

**NOTE:**  
IF ADDITIONAL LIGHT IS DESIRED INSIDE OF HOUSE, REPLACE PLYWOOD WITH PLASTIC FILM AND OMIT INSULATION IN FIXED WALL PANEL.

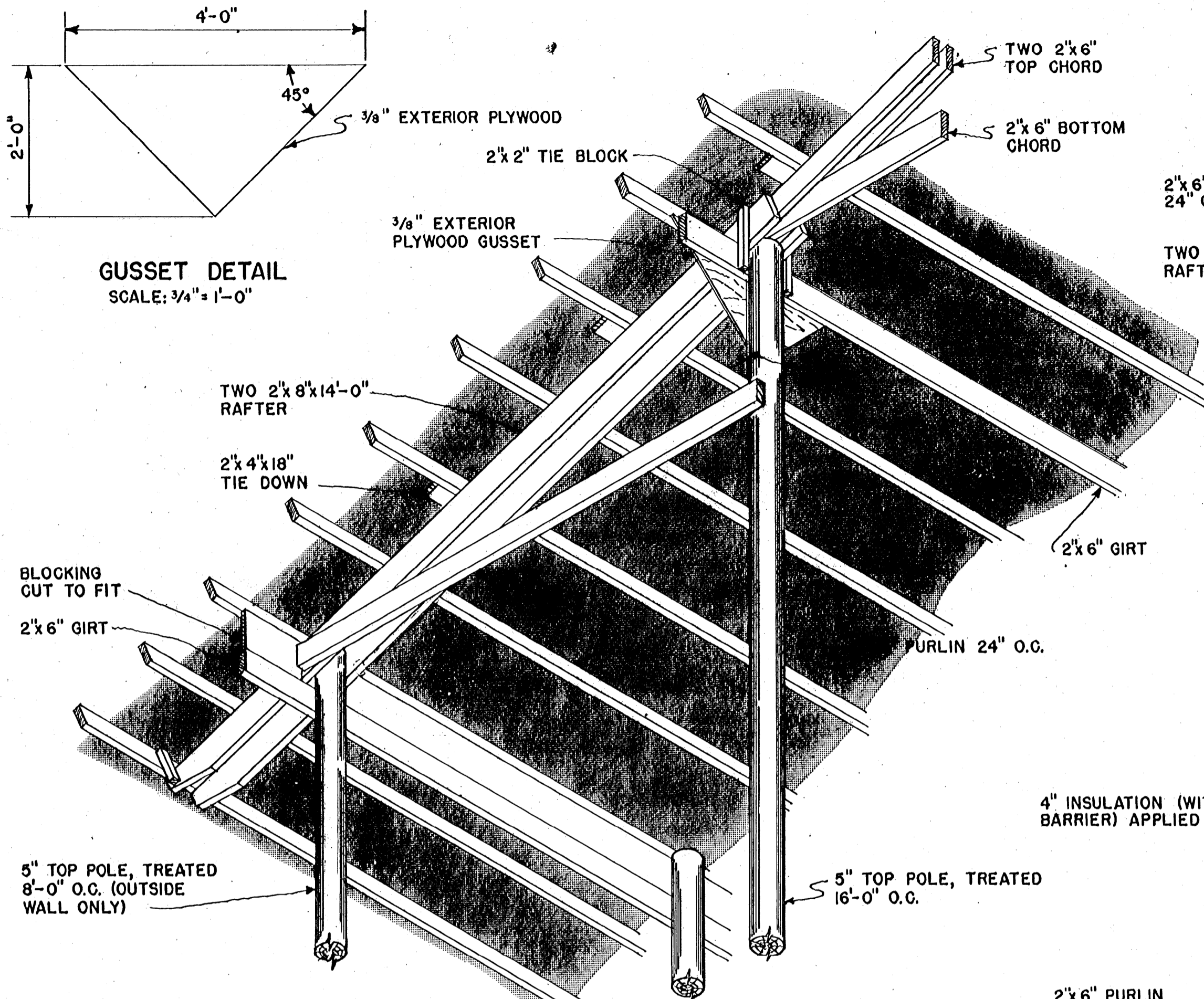
COOPERATIVE EXTENSION WORK IN AGRICULTURE AND HOME ECONOMICS  
STATE OF MISSISSIPPI  
MISSISSIPPI STATE UNIVERSITY  
AND  
UNITED STATES DEPARTMENT OF AGRICULTURE COOPERATING

**LAYING HOUSE**

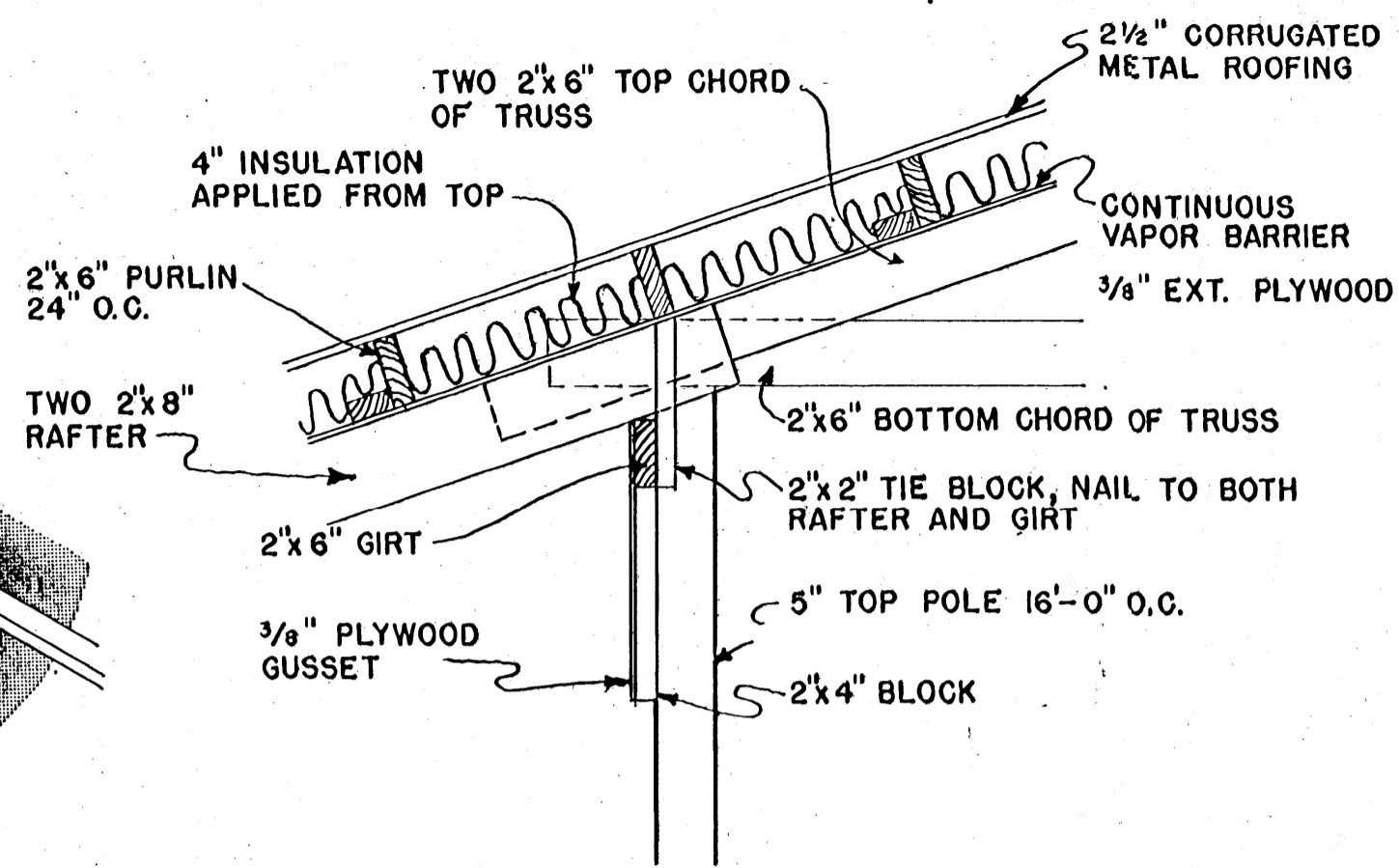
USDA '65	EX. 5990	SHEET 2 OF 4
----------	----------	--------------



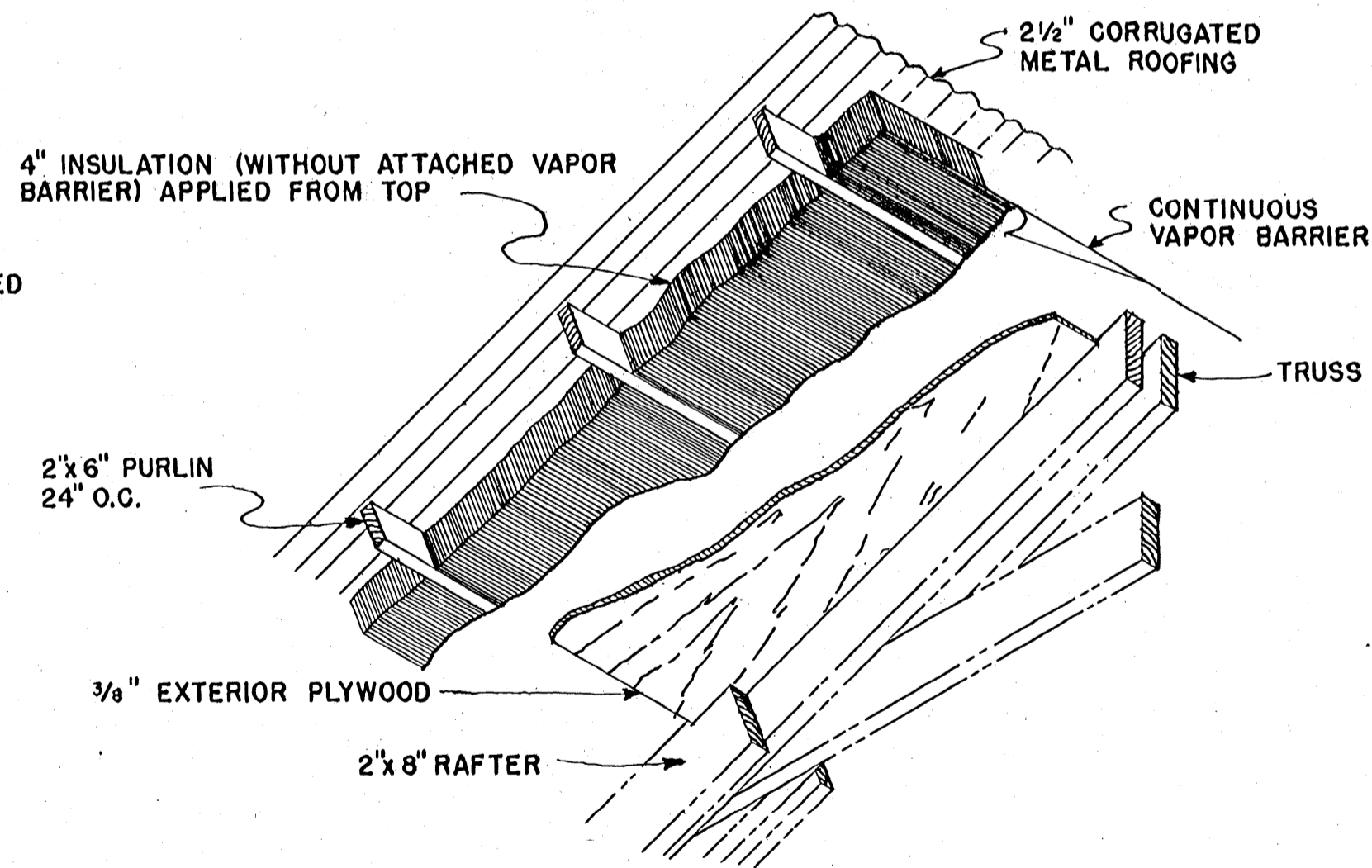
**GUSSET DETAIL**  
SCALE: 3/4" = 1'-0"



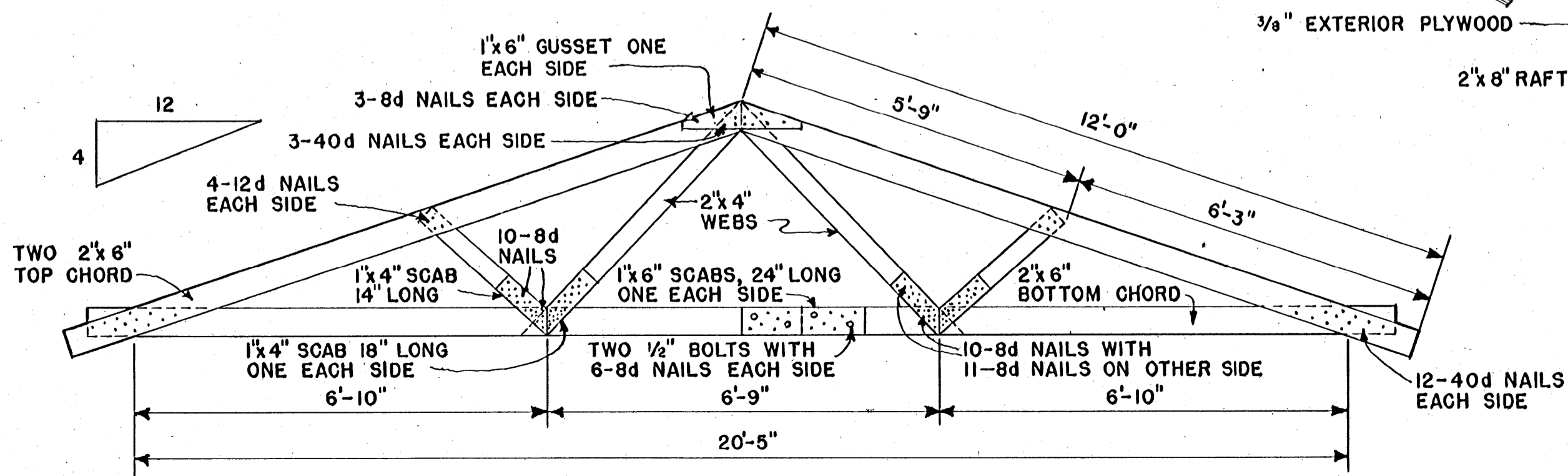
**VIEW OF ROOF FRAMING**  
SCALE: 1/2" = 1'-0"



**TRUSS - RAFTER CONNECTION**  
SCALE: 3/4" = 1'-0"

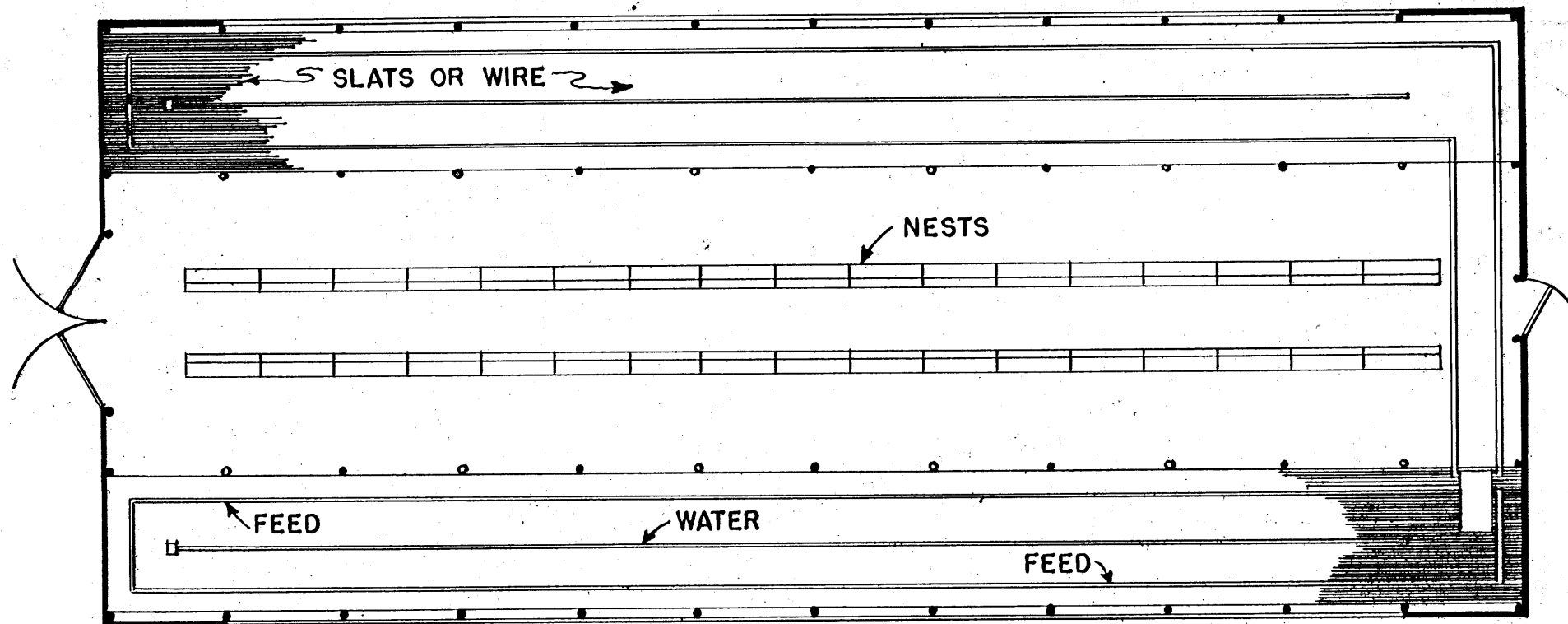


**INSULATION DETAIL**  
SCALE: 3/4" = 1'-0"

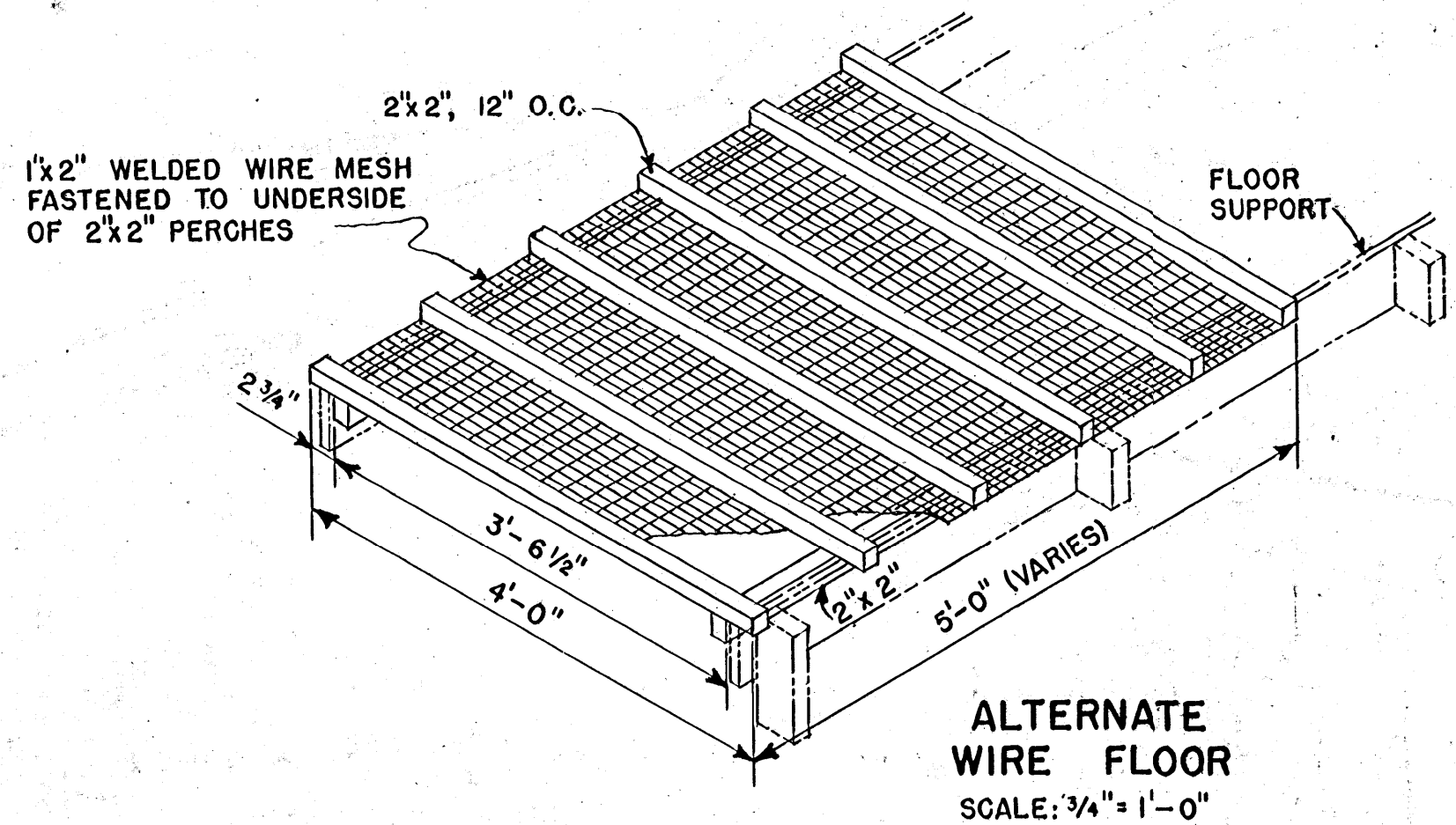


**TRUSS DETAIL**  
SCALE: 1/2" = 1'-0"

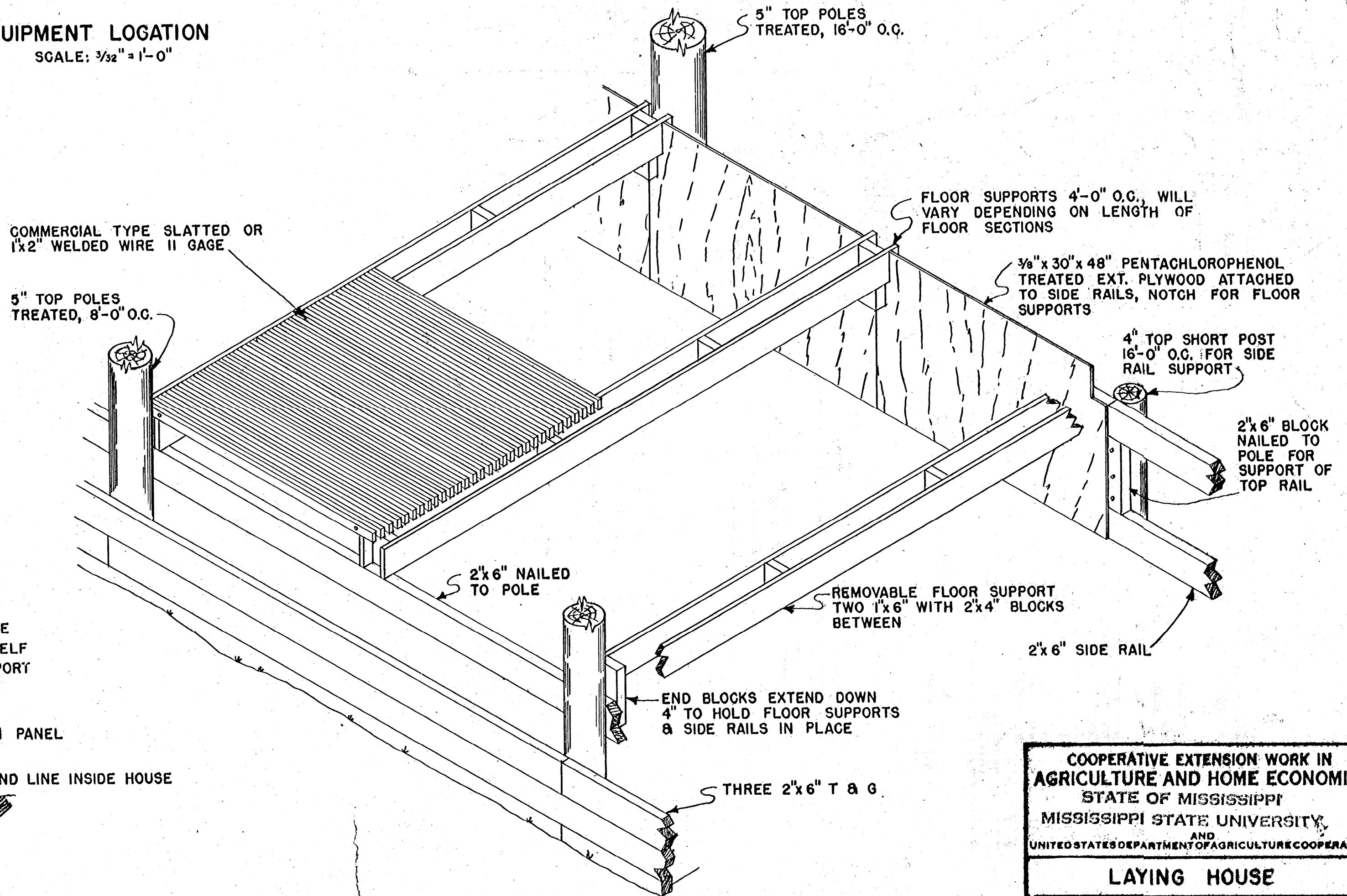
COOPERATIVE EXTENSION WORK IN AGRICULTURE AND HOME ECONOMICS		
STATE OF MISSISSIPPI		
MISSISSIPPI STATE UNIVERSITY		
AND UNITED STATES DEPARTMENT OF AGRICULTURE COOPERATING		
<b>LAYING HOUSE</b>		
USDA '65	EX. 5990	SHEET 3 OF 4



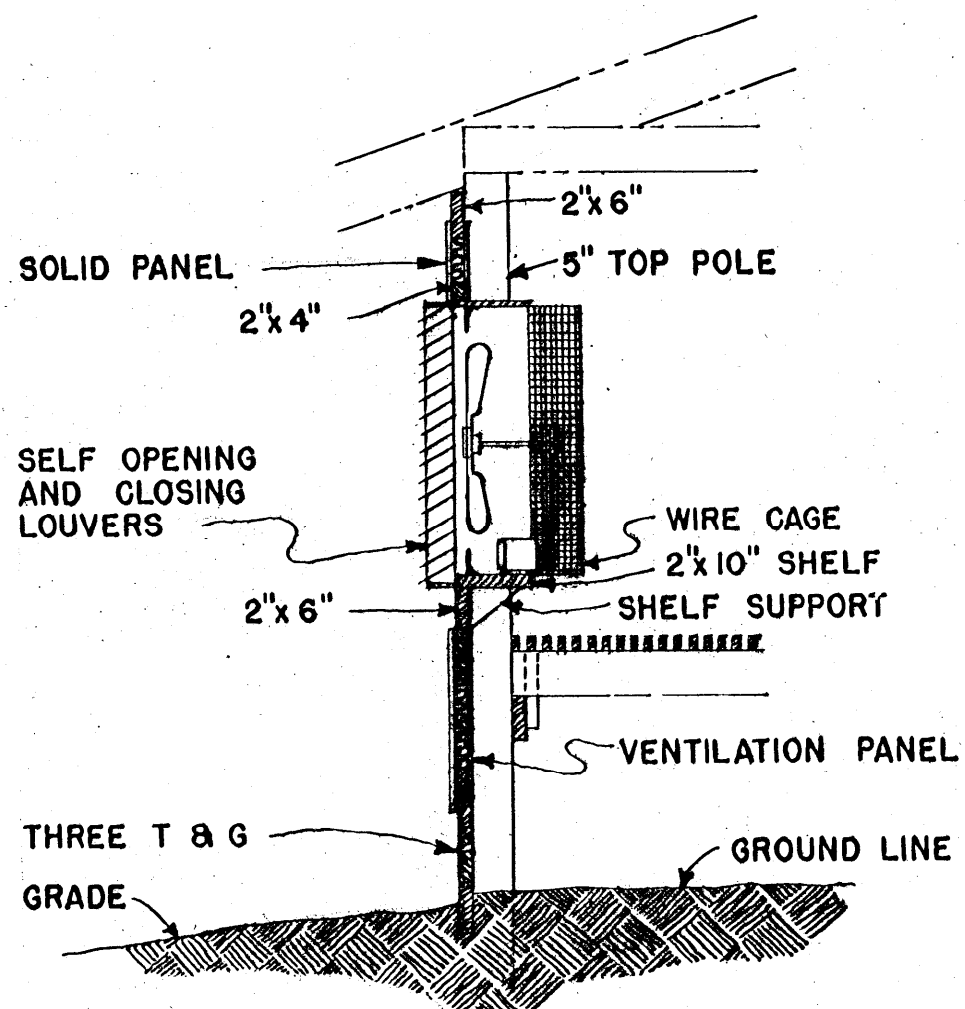
**EQUIPMENT LOCATION**  
SCALE:  $\frac{3}{32}$ " = 1'-0"



**ALTERNATE WIRE FLOOR**  
SCALE:  $\frac{3}{4}$ " = 1'-0"



**FLOOR SUPPORT DETAIL**  
SCALE:  $\frac{3}{4}$ " = 1'-0"



**SECTION D-D**  
SCALE:  $\frac{1}{2}$ " = 1'-0"

COOPERATIVE EXTENSION WORK IN AGRICULTURE AND HOME ECONOMICS STATE OF MISSISSIPPI MISSISSIPPI STATE UNIVERSITY AND UNITED STATES DEPARTMENT OF AGRICULTURE COOPERATING		
<b>LAYING HOUSE</b>		
USDA '65	EX. 5990	SHEET 4 OF 4