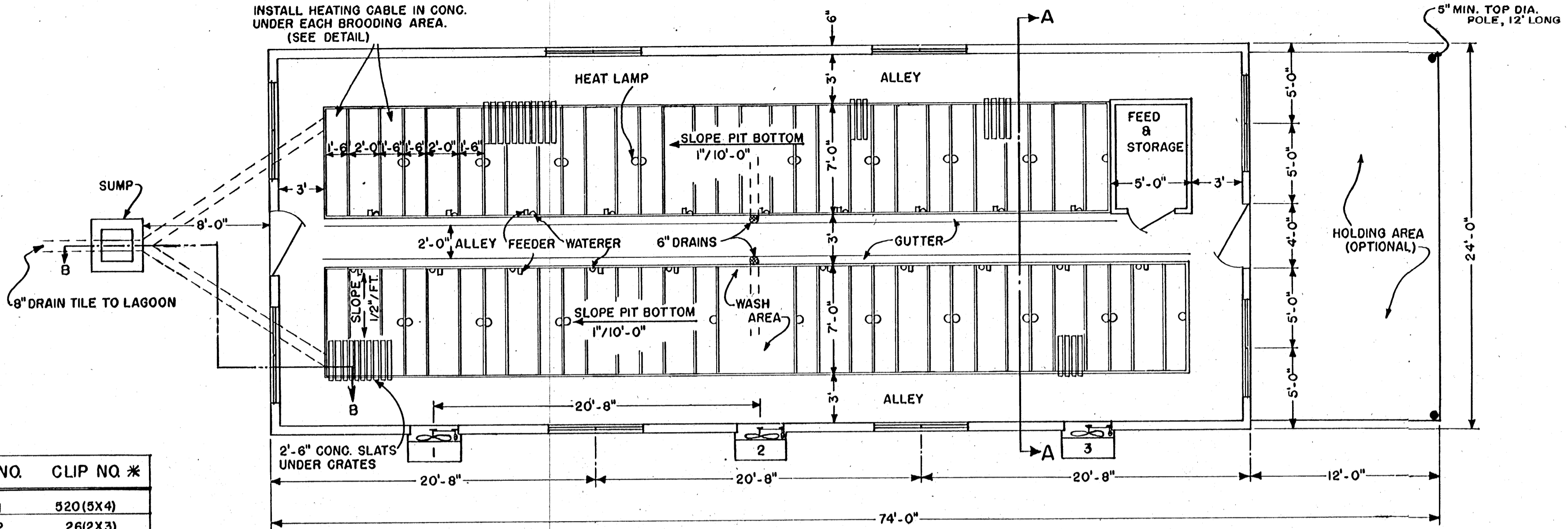


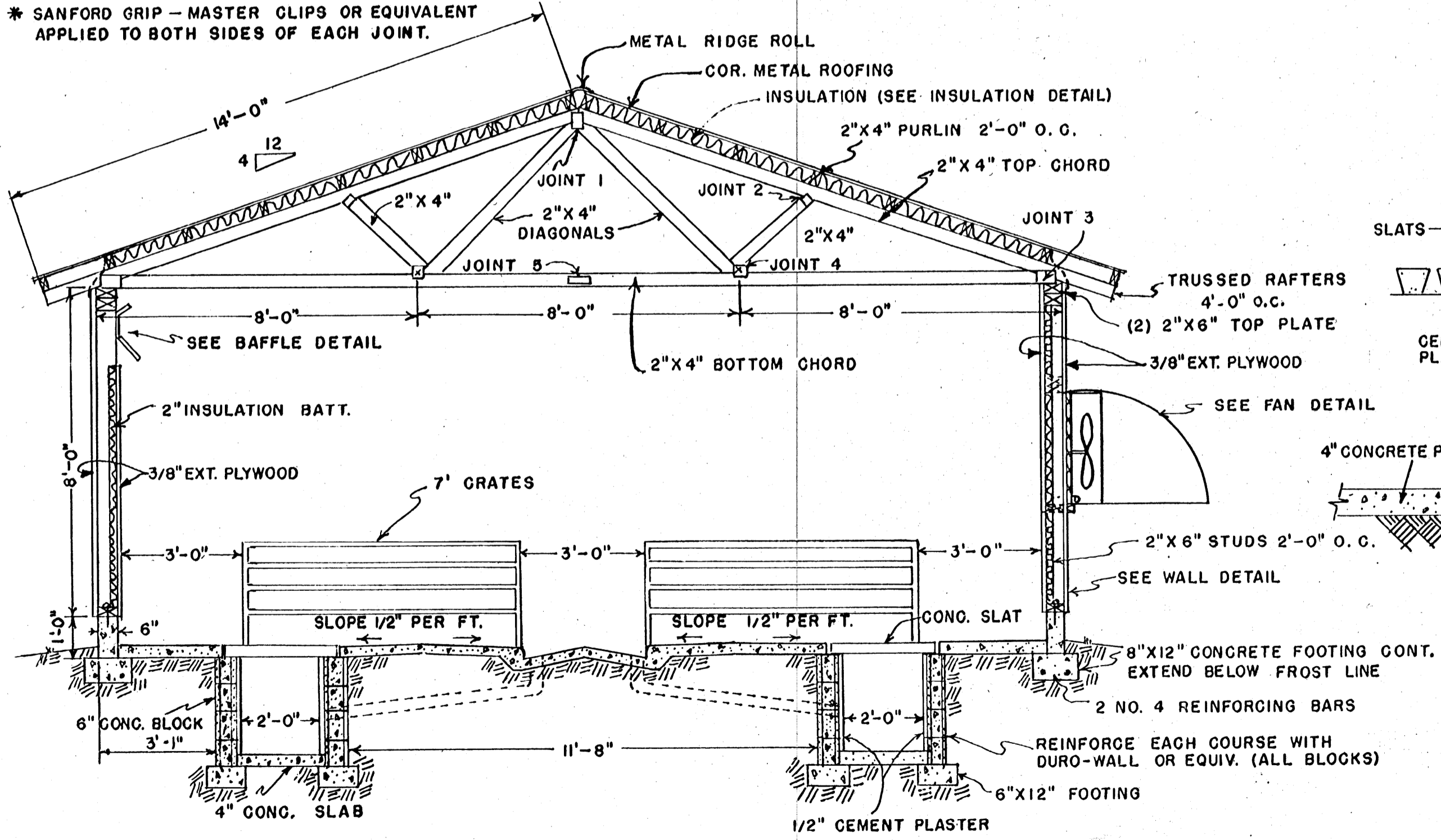
INSTALL HEATING CABLE IN CONG. UNDER EACH BROODING AREA. (SEE DETAIL)



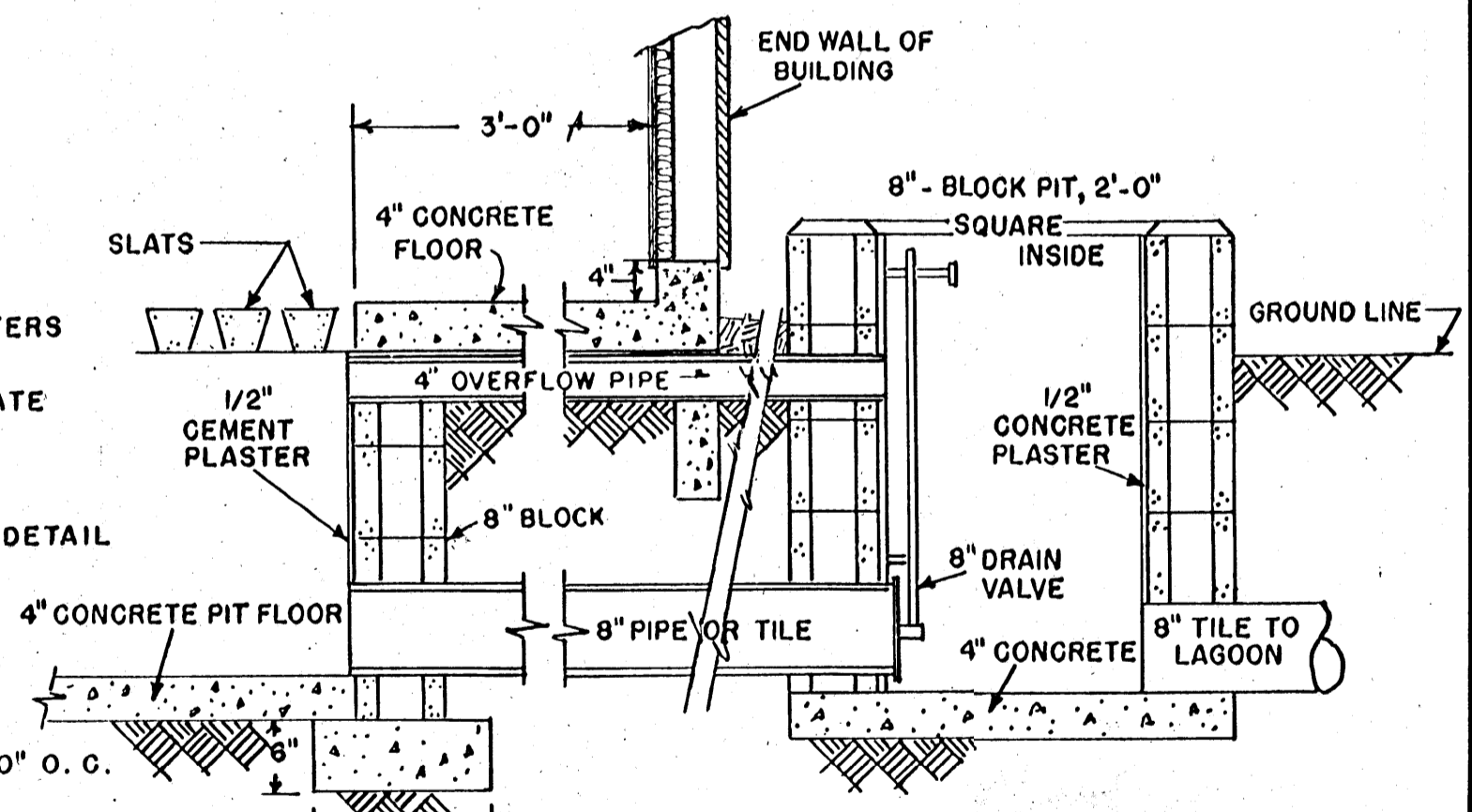
JOINT NO.	CLIP NO. *
JOINT-1	520(5X4)
JOINT-2	26(2X3)
JOINT-3	318(3X6)
JOINT-4	312(3X4)
JOINT-5	318(3X5)

PLAN VIEW
SCALE: 3/16" = 1'-0"

* SANFORD GRIP - MASTER CLIPS OR EQUIVALENT APPLIED TO BOTH SIDES OF EACH JOINT.



SECTION A-A
SCALE: 3/8" = 1'-0"



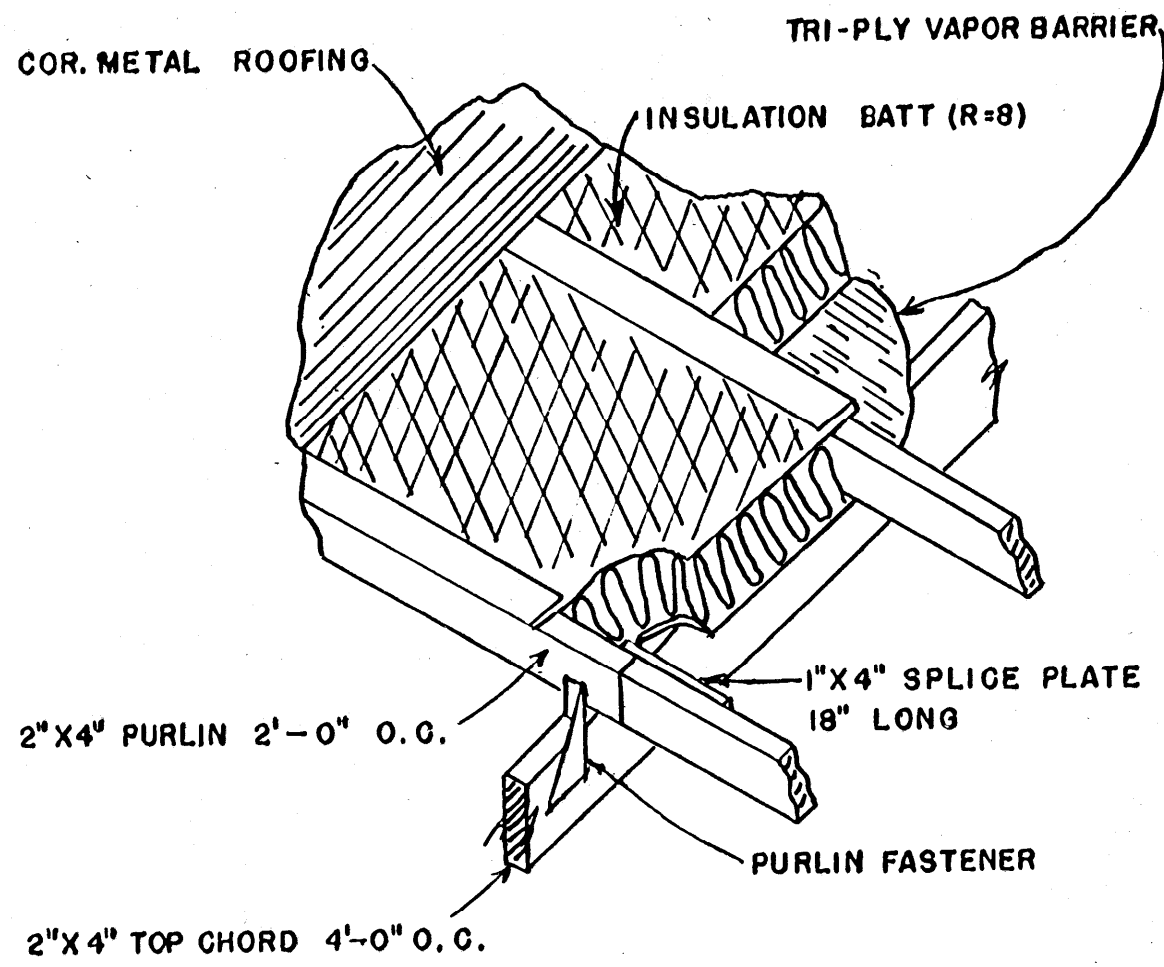
SECTION B-B

BASED ON:
AUBURN UNIV. PLAN NO. J-117

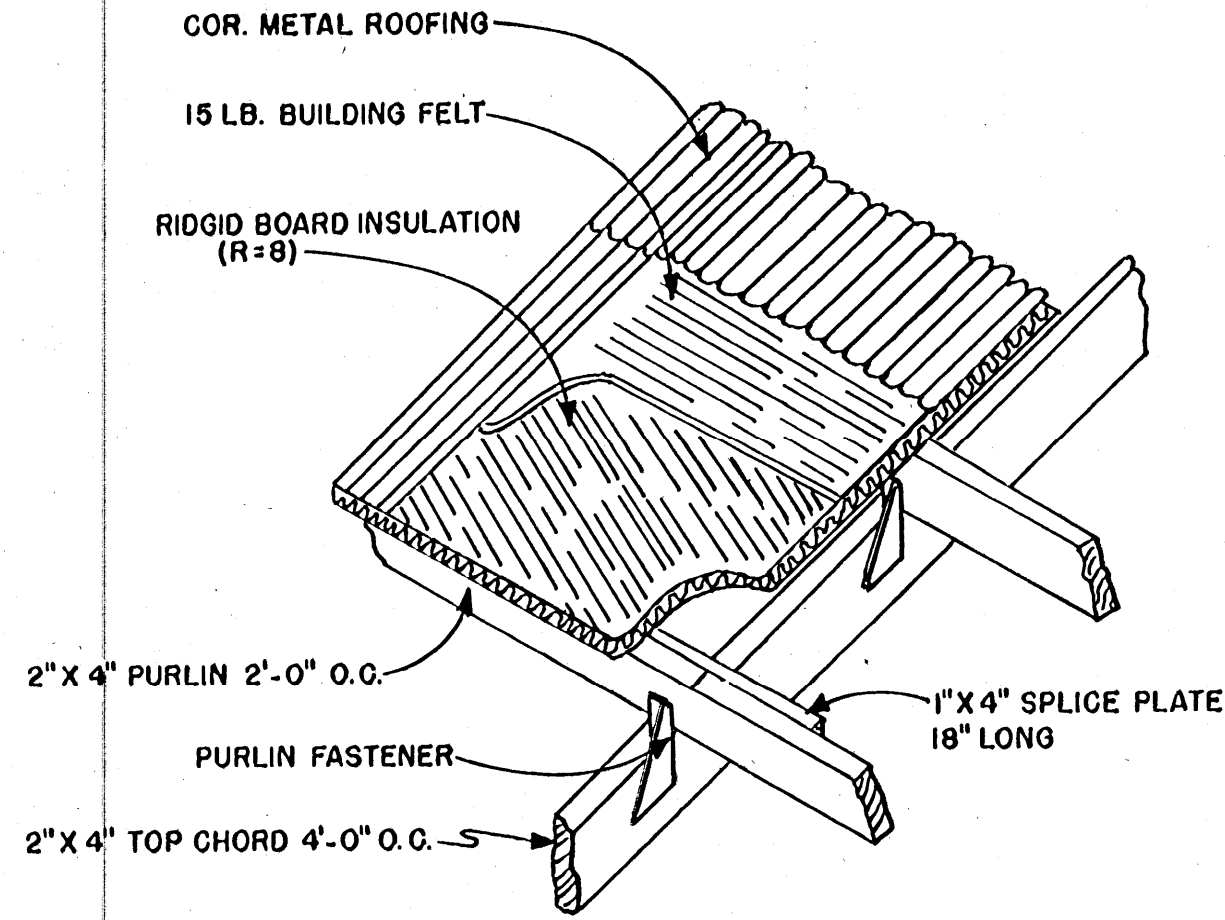
COOPERATIVE EXTENSION WORK IN
AGRICULTURE AND HOME ECONOMICS
STATE OF MISSISSIPPI
MISSISSIPPI STATE UNIVERSITY
AND
UNITED STATES DEPARTMENT OF AGRICULTURE COOPERATING

**FARROWING HOUSE FOR SWINE
ENVIRONMENTALLY CONTROLLED**

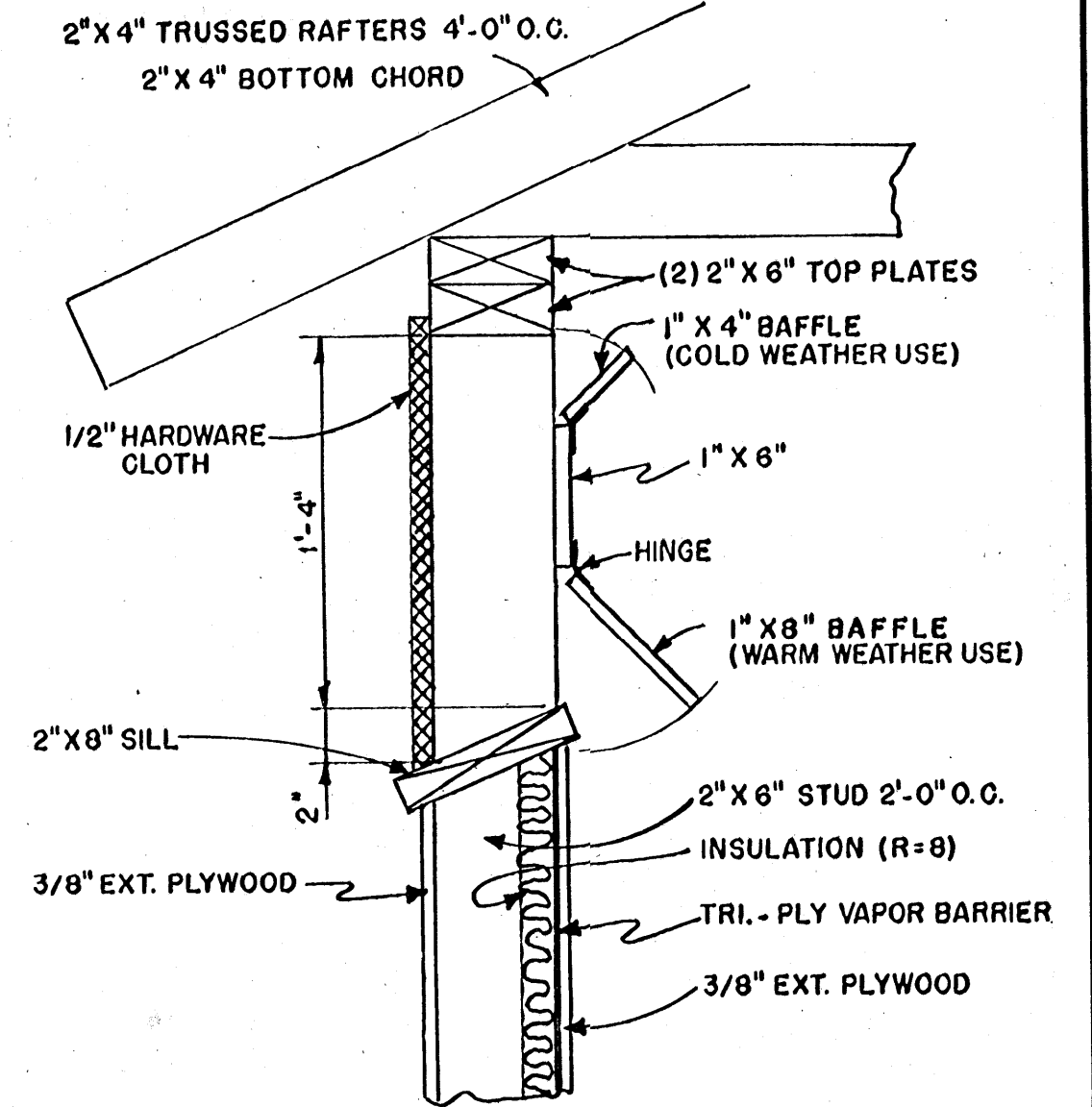
ALA.	'71	6130	SHEET 1 OF 3
------	-----	------	--------------



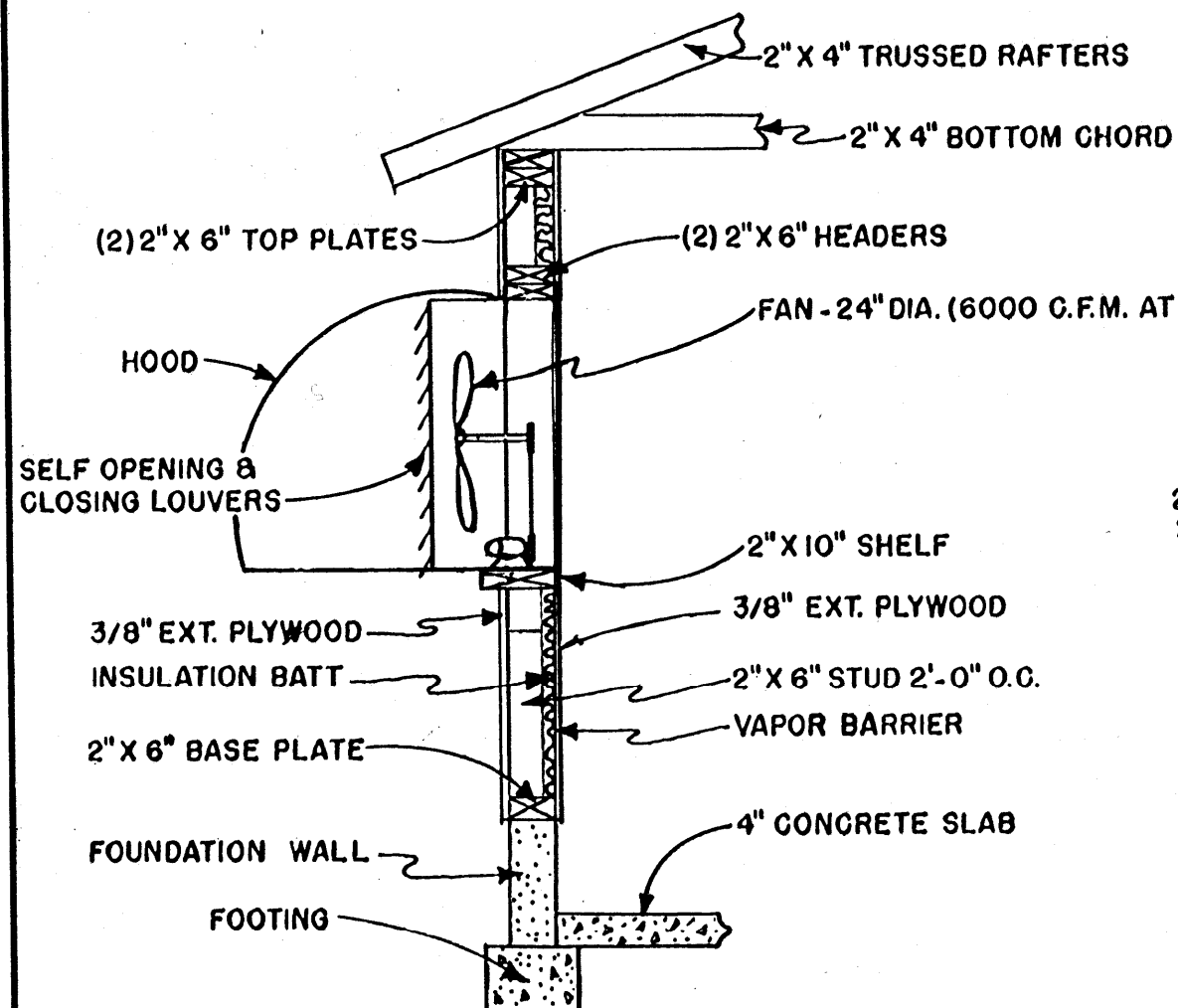
INSULATION DETAIL



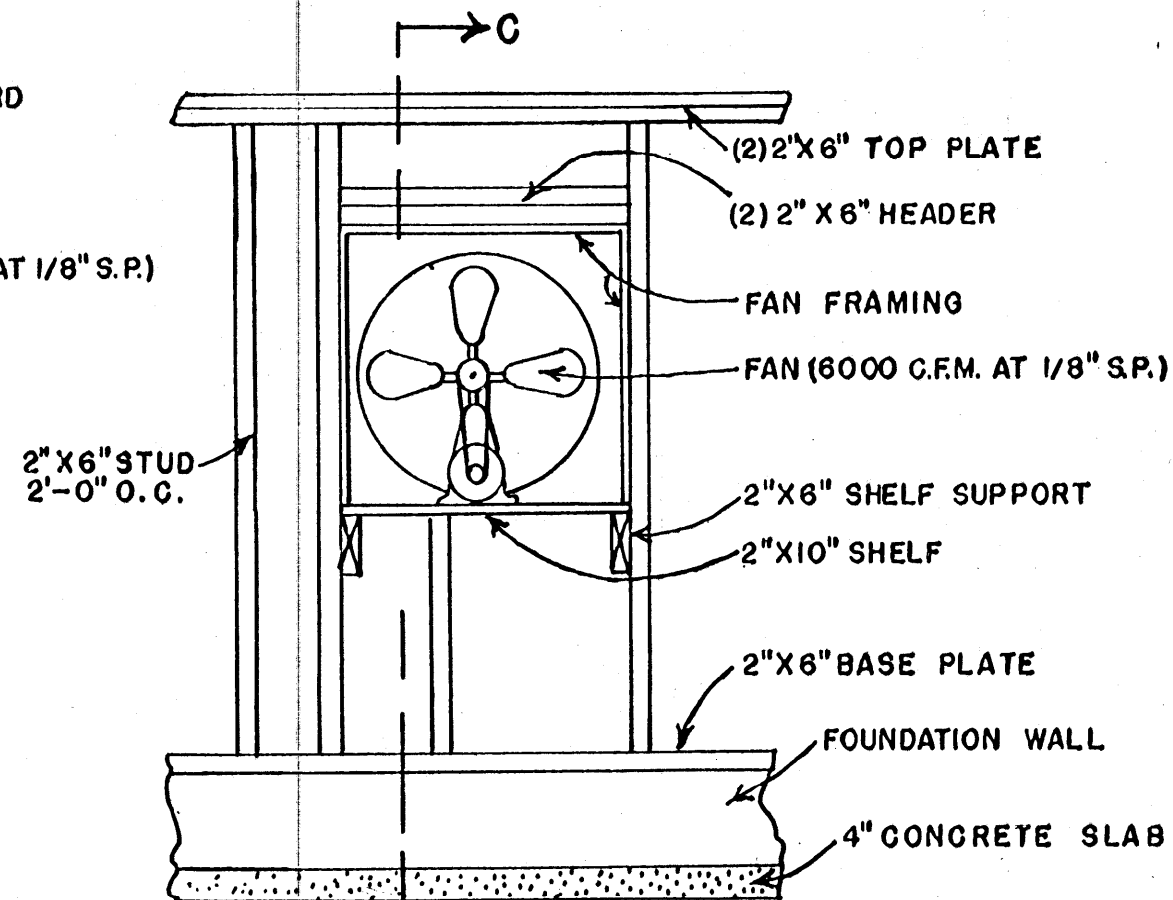
ALTERNATE INSULATION DETAIL



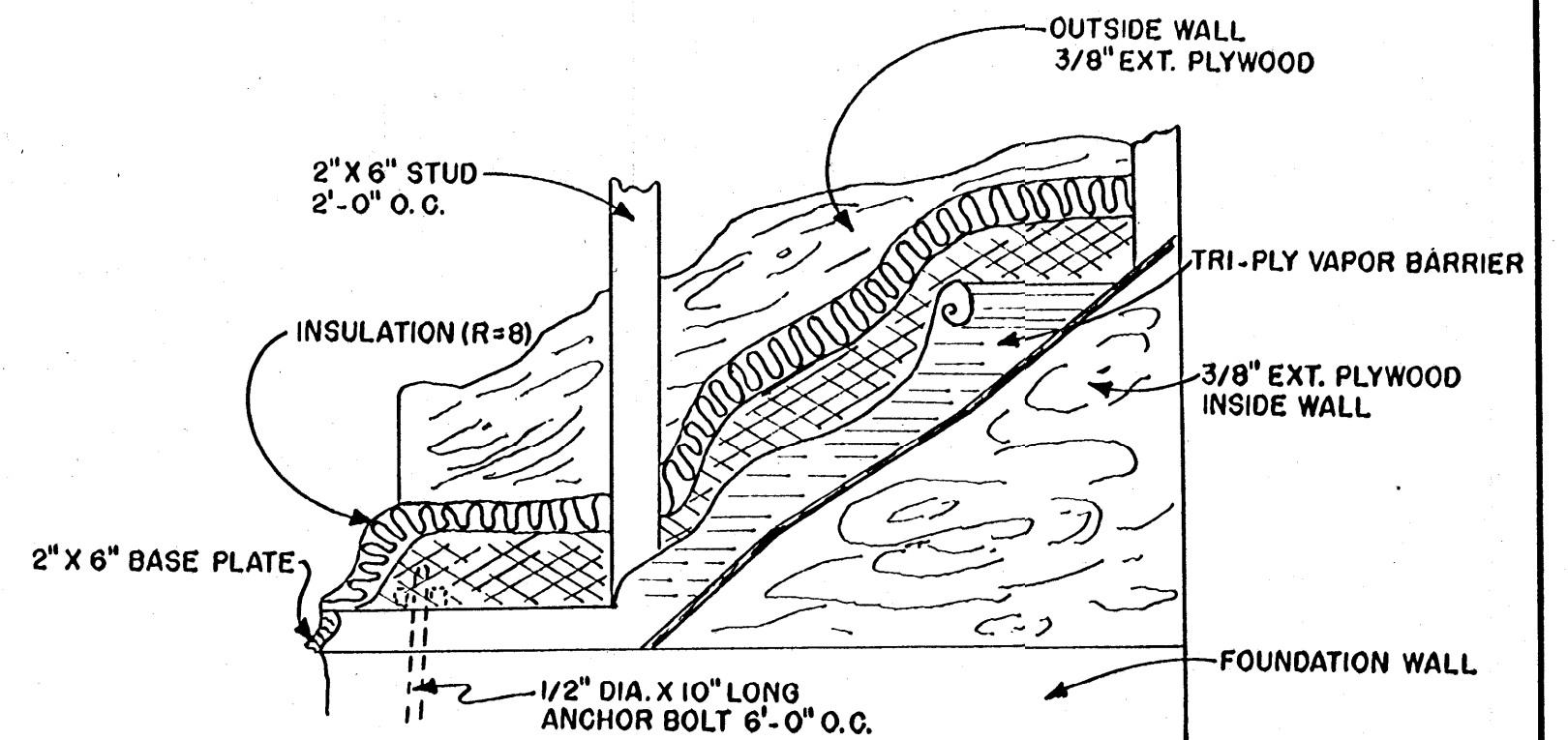
BAFFLE DETAIL



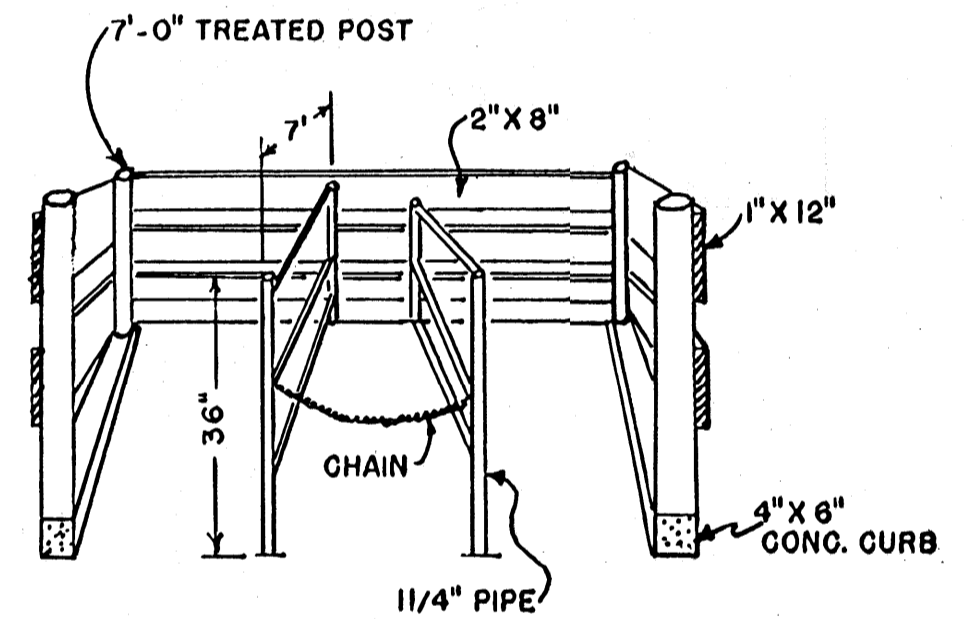
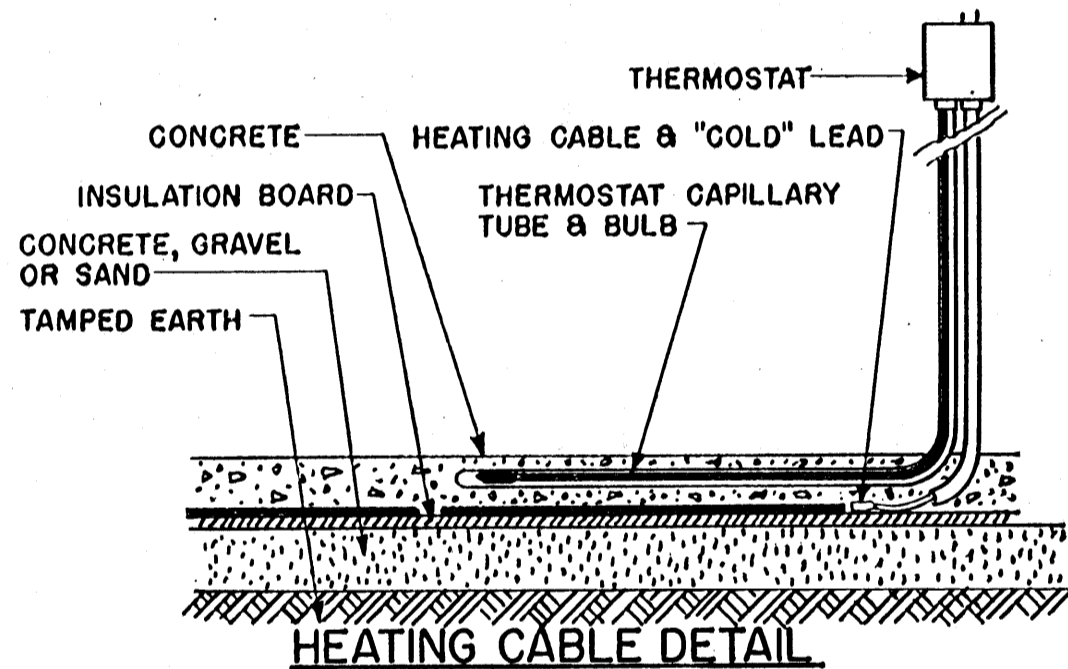
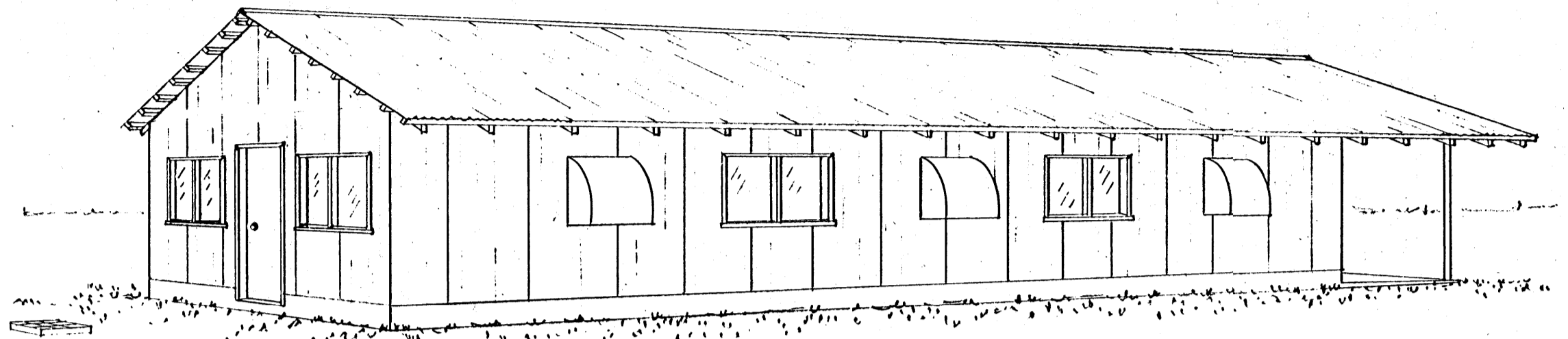
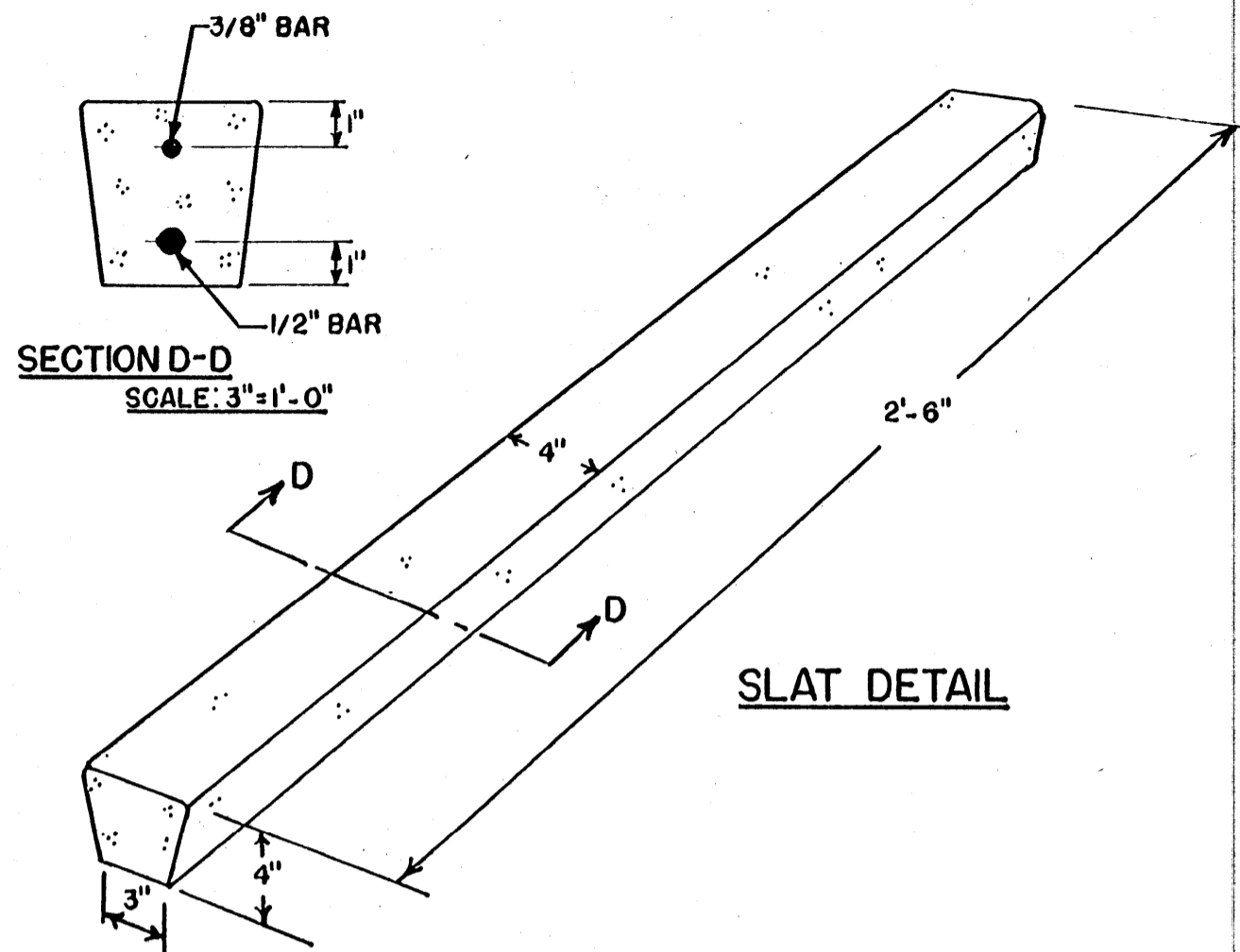
**SECTION C-C
FAN DETAILS**



VIEW FROM INSIDE HOUSE



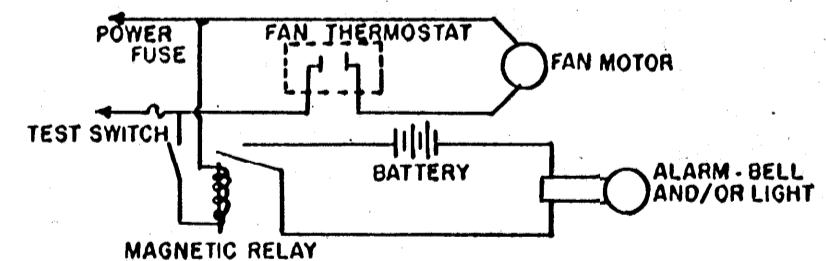
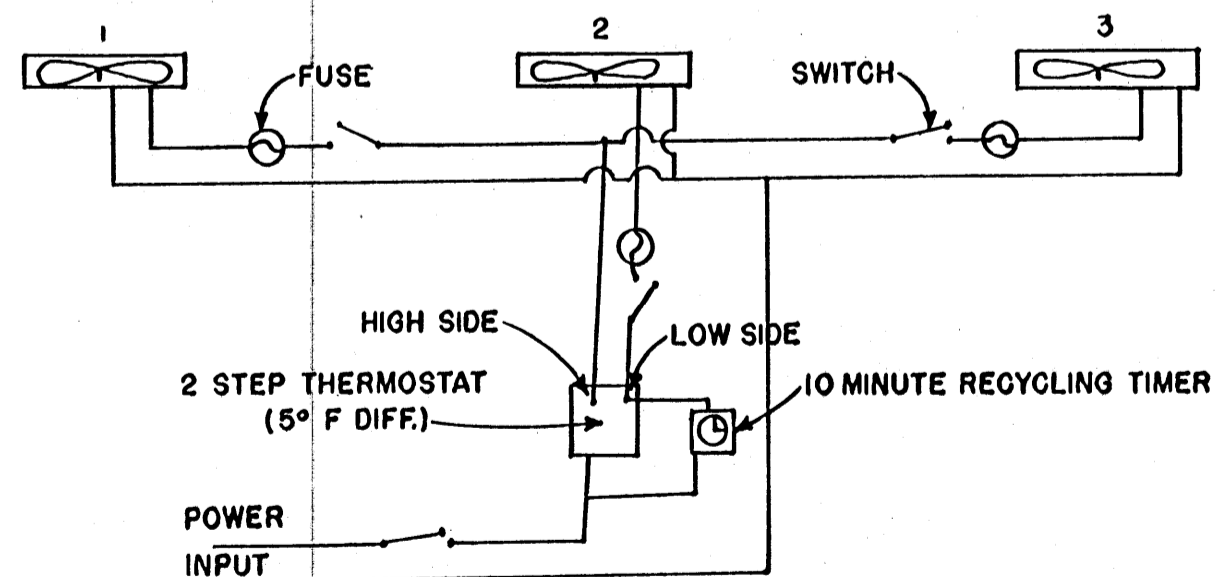
WALL CONSTRUCTION DETAIL



VENTILATION SYSTEM OPERATION

WARM WEATHER:
FAN 2 CONTROLLED BY LOW SIDE OF 5° DIFFERENTIAL STEP THERMOSTAT, FANS 1 AND 3 CONTROLLED BY HIGH SIDE.

COLD WEATHER:
USE TIME CLOCK TO OPERATE FAN 2 APPROXIMATELY 20% OF TIME (2 MIN. IN 10) FOR MOISTURE REMOVAL, AND TO MAINTAIN HUMIDITY AT 55-70% IN BUILDING. MAINTAIN TEMPERATURES AT 60-70° F.



COOPERATIVE EXTENSION WORK IN
AGRICULTURE AND HOME ECONOMICS
STATE OF MISSISSIPPI
MISSISSIPPI STATE UNIVERSITY
AND
UNITED STATES DEPARTMENT OF AGRICULTURE COOPERATING

**FARROWING HOUSE FOR SWINE
ENVIRONMENTALLY CONTROLLED**

ALA. '71 | 6130 | SHEET 3 OF 3