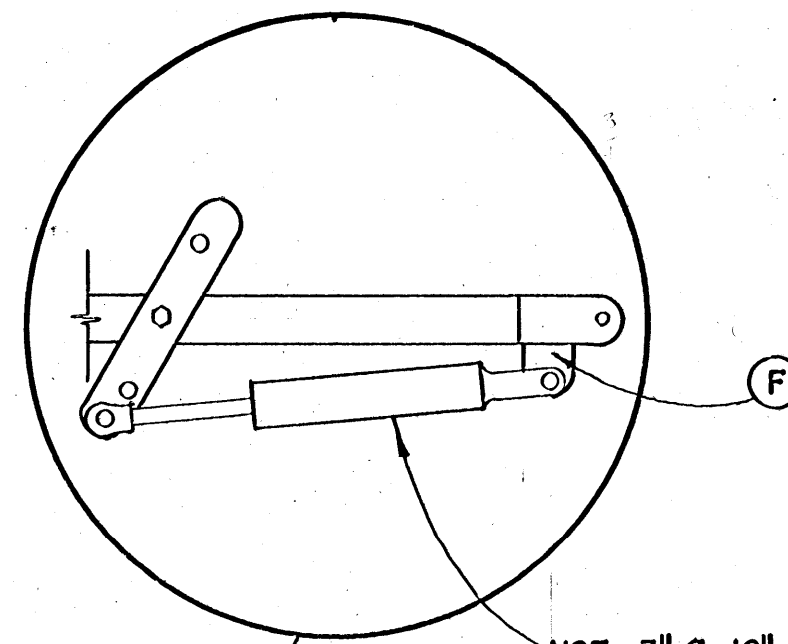
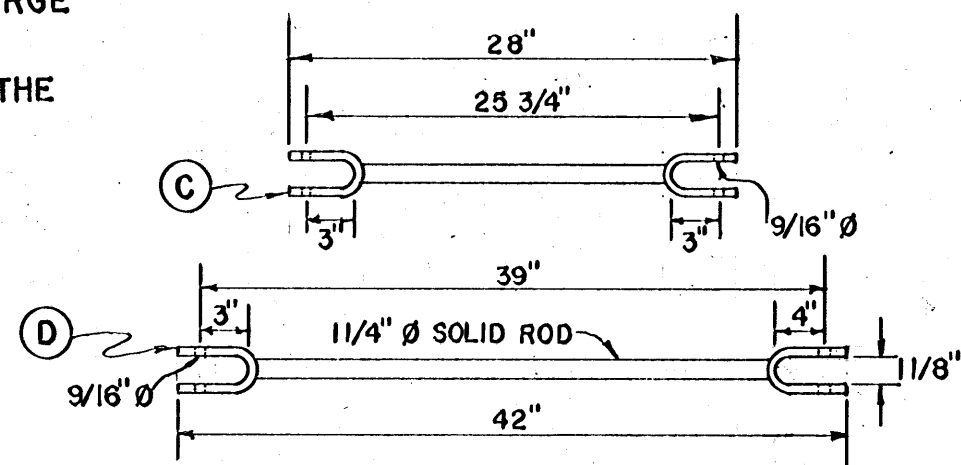
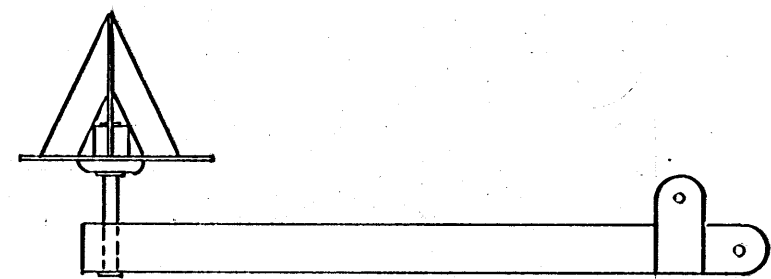
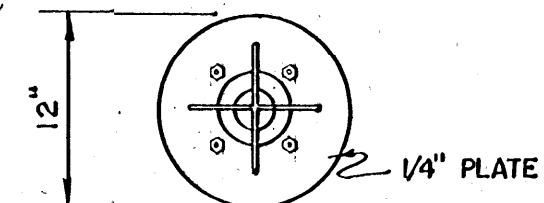


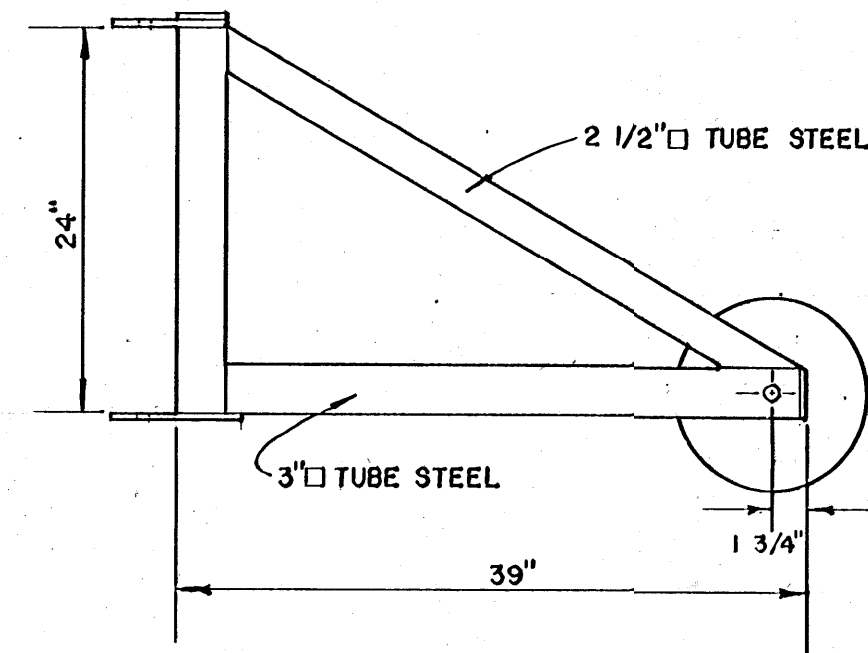
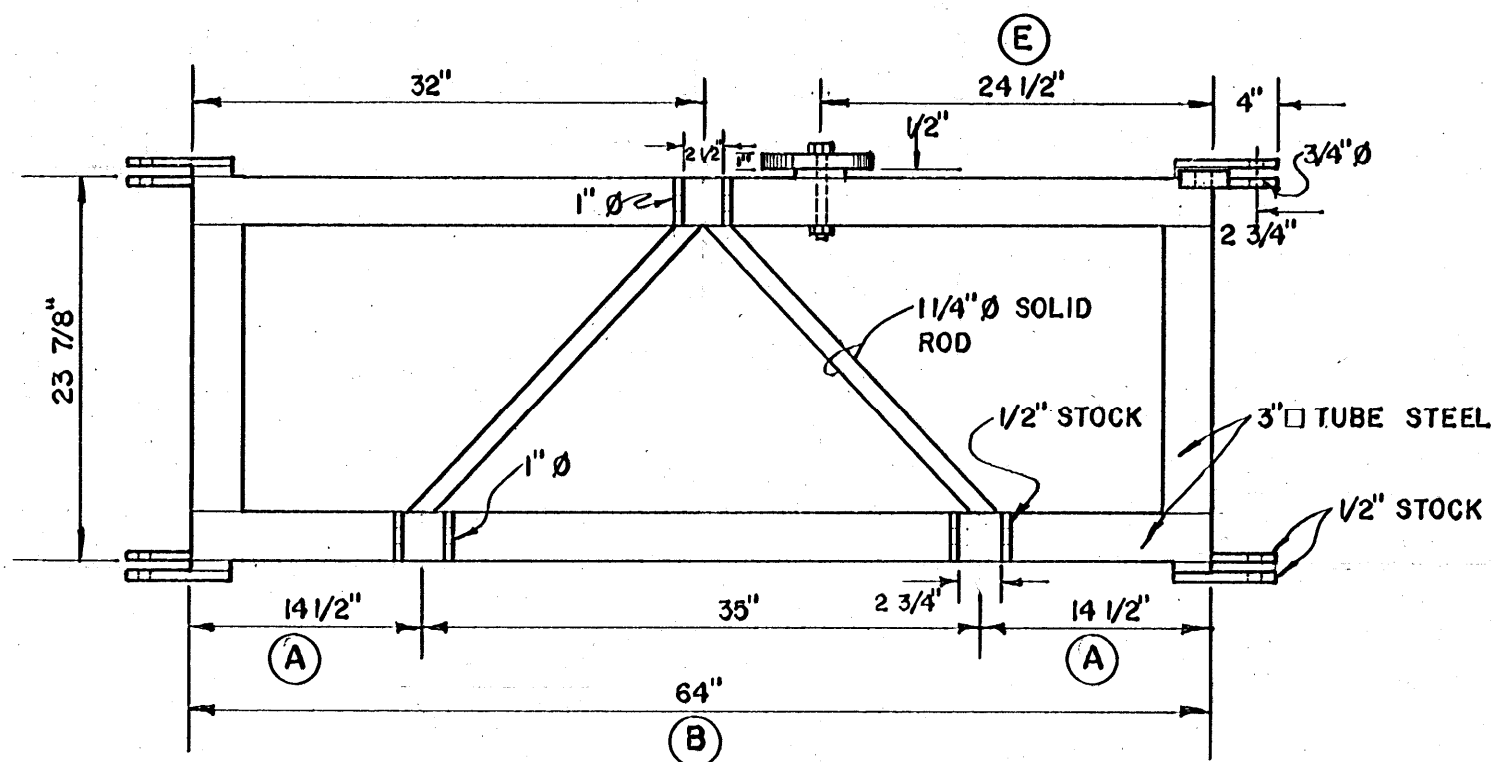
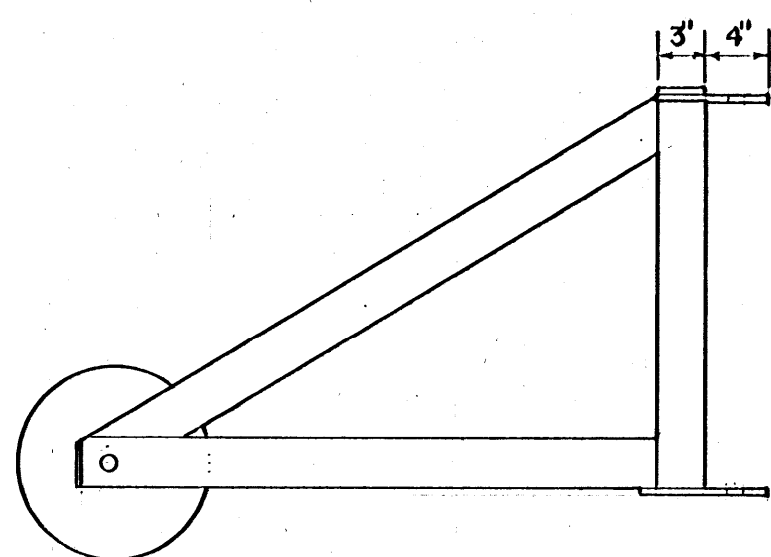
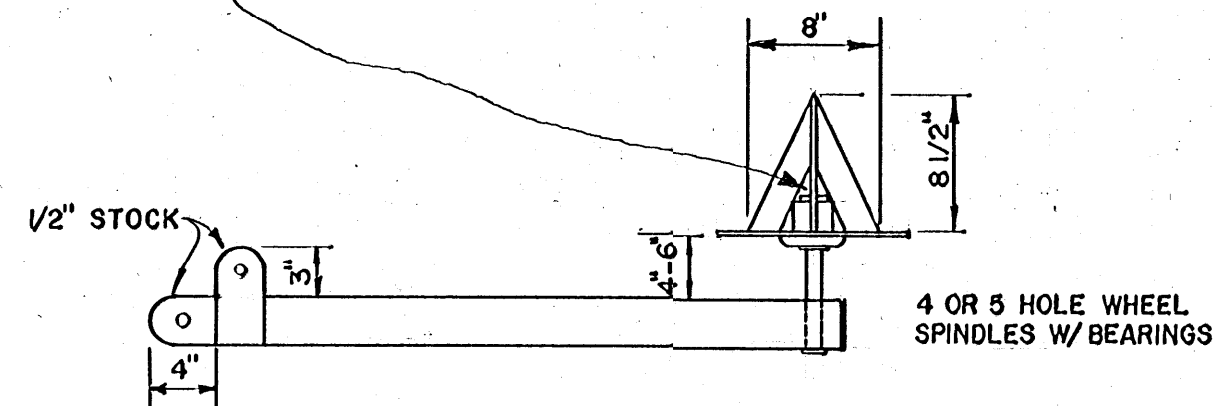
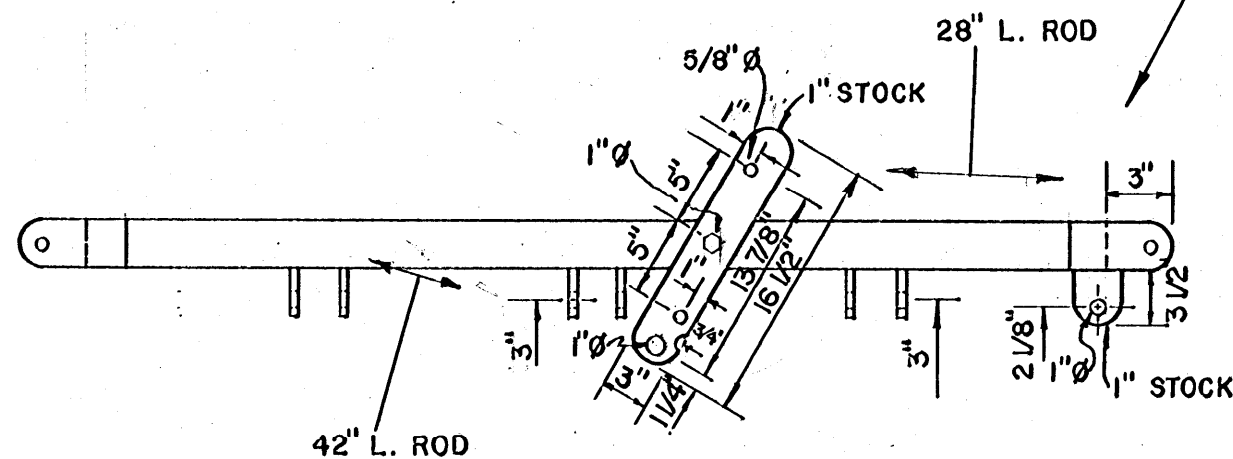
1. THE TRANSPORTER-UNROLLER IS DESIGNED TO TRANSPORT AND UNROLL LARGE BALES 5 FEET LONG.
2. IF LONGER BALES ARE TO BE CARRIED DIMENSION "A" SHOULD BE CHANGED SO THAT DIMENSION "B" IS 4" MORE THAN THE BALE IS LONG. THE DIMENSION OF RODS "C" AND "D" MUST BE CHANGED THE SAME AMOUNT THAT DIMENSION "A" IS CHANGED. DIMENSION "E" MUST BE CHANGED THE SAME AMOUNT AS DIMENSION "A". THE CYLINDER ANCHOR POINT "F" MUST BE CHANGED THE SAME AMOUNT AS DIMENSION "A" TO ACCOMMODATE THE CYLINDER AND THE STROKE IT MUST TRAVEL TO OPERATE THE TRANSPORTER.
3. THE TRANSPORTER IS DESIGNED TO BE USED WITH A 100 H.P. OR LARGER TRACTOR (APPROX.). IF A TRANSPORTER IS BUILT TO TRANSPORT A LONGER BALE MAKE SURE THE TRACTOR IS LARGE ENOUGH TO HANDLE IT.
4. CAUTION!! WHEN TRANSPORTING KEEP THE BALE CLOSE TO THE GROUND AND AVOID ROUGH TERRAIN.



USE 3" Ø-12" STROKE DOUBLE ACTING HYDRAULIC CYLINDER. CONNECT LINES TO TRACTOR HYDRAULIC SYSTEM.



ALLOW ENOUGH SPACE IN BACK OF WEDGES TO REMOVE HUB CAP AND SPINDLE NUT:



SCALE : 1" = 1'-0"

BIG BALE FEEDER		PL. NO. 6291-A
BIG ROUND BALE TRANSPORTER-UNROLLER : 3 POINT HITCH		
	DESIGN BY KING RANCH/MILLER	SHEET
	DRAWN BY M.J. THRASHER	1
	DATE SEPTEMBER, 1979	OF 1