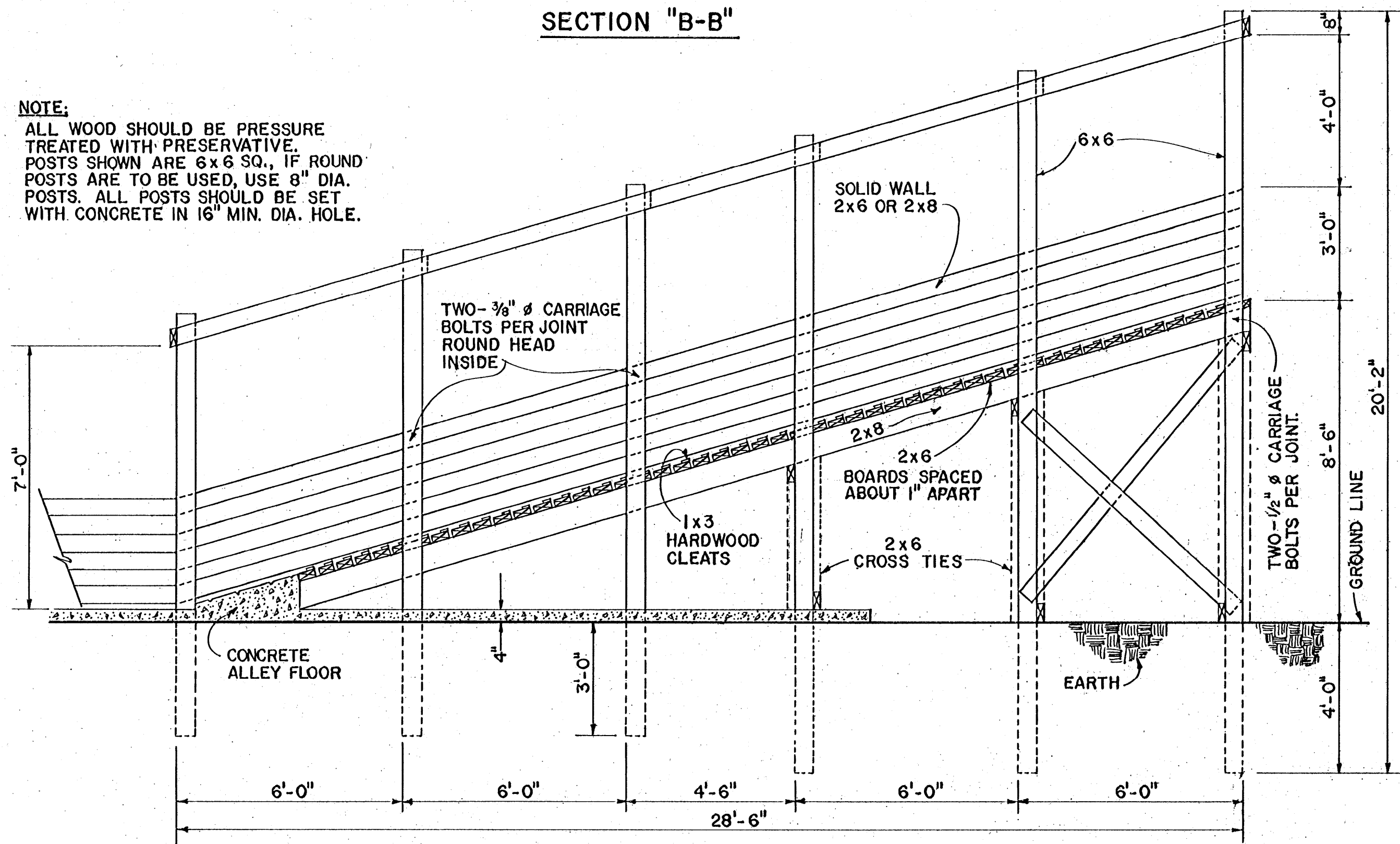
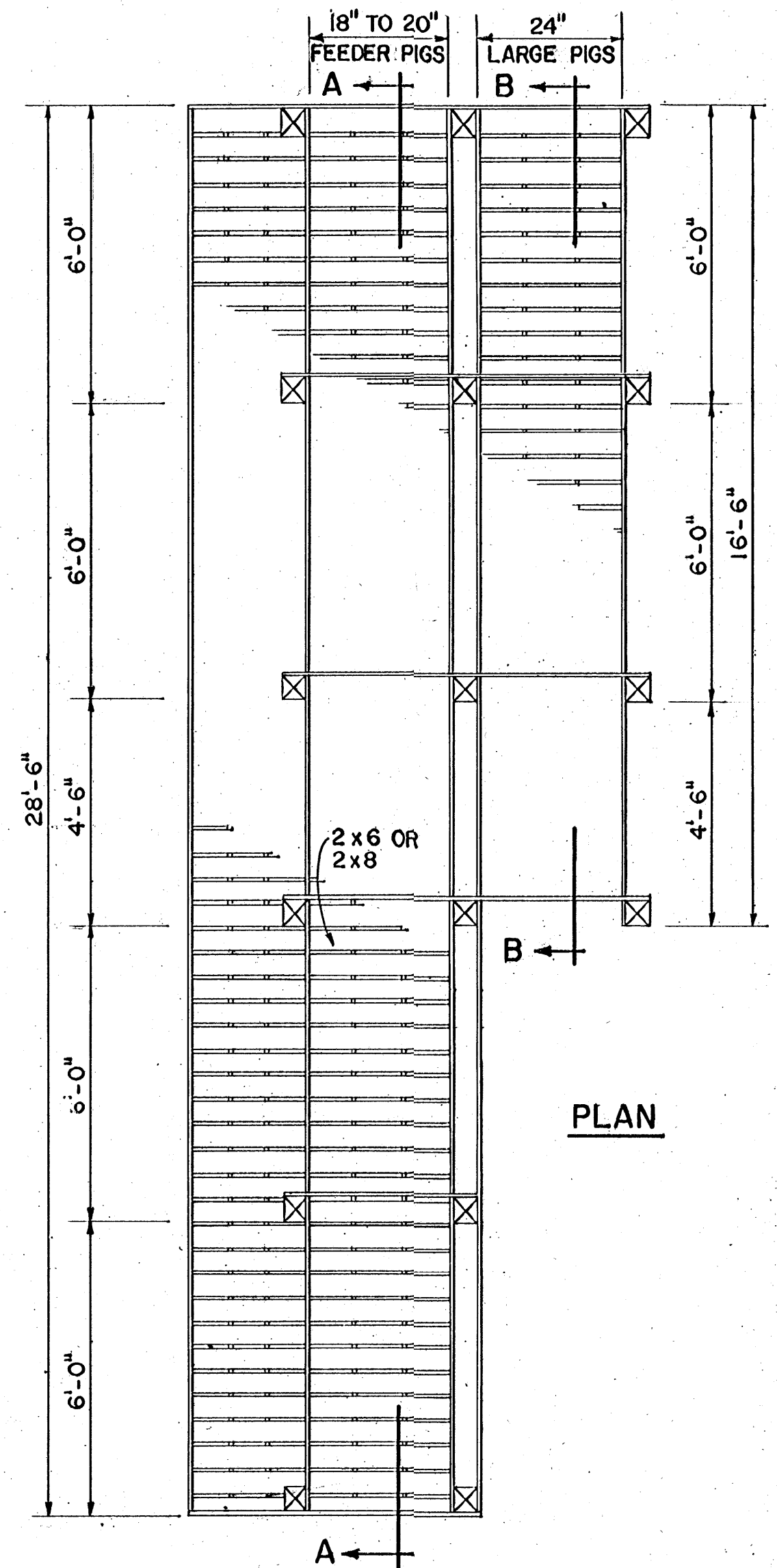


SECTION "B-B"

**NOTE:**  
 ALL WOOD SHOULD BE PRESSURE TREATED WITH PRESERVATIVE. POSTS SHOWN ARE 6x6 SQ., IF ROUND POSTS ARE TO BE USED, USE 8" DIA. POSTS. ALL POSTS SHOULD BE SET WITH CONCRETE IN 16" MIN. DIA. HOLE.



SECTION "A-A"



PLAN



SCALE: 3/8" = 1'-0" UNLESS OTHERWISE NOTED

COOPERATIVE EXTENSION WORK IN AGRICULTURE AND HOME ECONOMICS  
 STATE OF MISSISSIPPI  
 MISSISSIPPI STATE UNIVERSITY  
 AND UNITED STATES DEPARTMENT OF AGRICULTURE COOPERATING

HOG LOADING CHUTE

MISS. '78 6309 SHEET 1 OF 1